

For Research Use Only

CKB Recombinant antibody, PBS Only

Catalog Number: 83522-5-PBS

Featured Product



Basic Information

Catalog Number:

83522-5-PBS

Size:

100ug, Concentration: 1 mg/ml by Nanodrop;

Source:

Rabbit

Isotype:

IgG

Immunogen Catalog Number:

AG7285

GenBank Accession Number:

BC001190

GeneID (NCBI):

1152

UNIPROT ID:

P12277

Full Name:

creatine kinase, brain

Calculated MW:

43 kDa

Observed MW:

40-45 kDa

Purification Method:

Protein A purification

CloneNo.:

240418D2

Applications

Tested Applications:

WB, FC (Intra), ELISA

Species Specificity:

human, mouse, rat

Background Information

CKBB, also named as B-CK and CKB, is a member of the ATP:guanido phosphotransferase protein family. It is a cytoplasmic enzyme involved in energy homeostasis. CKBB reversibly catalyzes the transfer of phosphate between ATP and various phosphogens such as creatine phosphate. It acts as a homodimer in brain as well as in other tissues, and as a heterodimer with a similar muscle isozyme in heart. CK isoenzymes play a central role in energy transduction in tissues with large, fluctuating energy demands, such as skeletal muscle, heart, brain and spermatozoa. CK MB consists of a dimer of nonidentical chains. With MM being the major form in skeletal muscle and myocardium, MB existing in myocardium, and BB existing in many tissues, especially brain. This antibody can recognize both CKB and CKM due to the high homology.

Storage

Storage:

Store at -80°C.

Storage Buffer:

PBS only, pH7.3

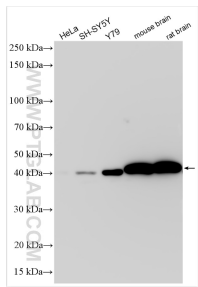
For technical support and original validation data for this product please contact:

T: 1 (888) 4PTGLAB (1-888-478-4522) (toll free in USA), or 1(312) 455-8498 (outside USA)

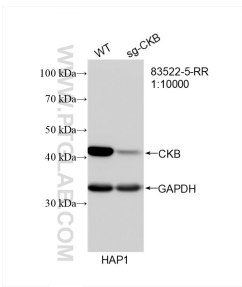
E: proteintech@ptglab.com
W: ptglab.com

This product is exclusively available under Proteintech Group brand and is not available to purchase from any other manufacturer.

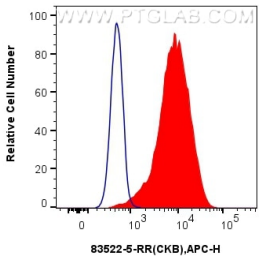
Selected Validation Data



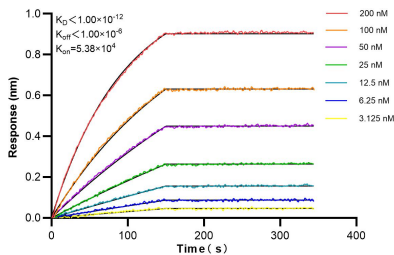
Various lysates were subjected to SDS PAGE followed by western blot with 83522-5-RR (CKB antibody) at dilution of 1:1500 incubated at room temperature for 1.5 hours. This data was developed using the same antibody clone with 83522-5-PBS in a different storage buffer formulation.



WB result of sg-CKB antibody (83522-5-RR; 1:10000; room temperature for 1.5 hours) with wild-type and sg-CKB transfected HAP1 cells. This data was developed using the same antibody clone with 83522-5-PBS in a different storage buffer formulation.



1x10⁶ HeLa cells were intracellularly stained with 0.25 ug CKB Recombinant Antibody (83522-5-RR, Clone:240418D2) and APC-Conjugated AffiniPure Goat Anti-Rabbit IgG(H+L)(red), or 0.25 ug Isotype Control (blue). Cells were fixed with 4% PFA and permeabilized with Flow Cytometry Perm Buffer (PF00011-C). This data was developed using the same antibody clone with 83522-5-PBS in a different storage buffer formulation.



Biolayer interferometry (BLI) kinetic assays of 83522-5-RR against Human CKB were performed. The affinity constant is below 1 pM.