

For Research Use Only

# CKB Recombinant antibody

Catalog Number: 83522-5-RR

Featured Product



## Basic Information

### Catalog Number:

83522-5-RR

### Size:

100ul, Concentration: 1000 ug/ml by Nanodrop;

### Source:

Rabbit

### Isotype:

IgG

### Immunogen Catalog Number:

AG7285

### GenBank Accession Number:

BC001190

### GeneID (NCBI):

1152

### UNIPROT ID:

P12277

### Full Name:

creatine kinase, brain

### Calculated MW:

43 kDa

### Observed MW:

40-45 kDa

### Purification Method:

Protein A purification

### CloneNo.:

240418D2

### Recommended Dilutions:

WB 1:500-1:3000

## Applications

### Tested Applications:

WB, FC (Intra), ELISA

### Species Specificity:

human, mouse, rat

### Positive Controls:

WB : HeLa cells, HAP1 cells, SH-SY5Y cells, Y79 cells, mouse brain tissue, rat brain tissue

## Background Information

CKBB, also named as B-CK and CKB, is a member of the ATP:guanido phosphotransferase protein family. It is a cytoplasmic enzyme involved in energy homeostasis. CKBB reversibly catalyzes the transfer of phosphate between ATP and various phosphogens such as creatine phosphate. It acts as a homodimer in brain as well as in other tissues, and as a heterodimer with a similar muscle isozyme in heart. CK isoenzymes play a central role in energy transduction in tissues with large, fluctuating energy demands, such as skeletal muscle, heart, brain and spermatozoa. CK MB consists of a dimer of nonidentical chains. With MM being the major form in skeletal muscle and myocardium, MB existing in myocardium, and BB existing in many tissues, especially brain. This antibody can recognize both CKB and CKM due to the high homology.

## Storage

### Storage:

Store at -20°C. Stable for one year after shipment.

### Storage Buffer:

PBS with 0.02% sodium azide and 50% glycerol, pH7.3

Aliquoting is unnecessary for -20°C storage

\*\*\* 20ul sizes contain 0.1% BSA

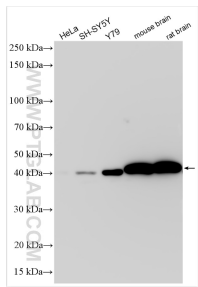
For technical support and original validation data for this product please contact:

T: 1 (888) 4PTGLAB (1-888-478-4522) (toll free in USA), or 1(312) 455-8498 (outside USA)

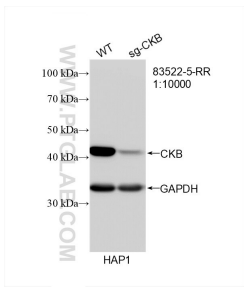
E: [proteintech@ptglab.com](mailto:proteintech@ptglab.com)  
W: [ptglab.com](http://ptglab.com)

This product is exclusively available under Proteintech Group brand and is not available to purchase from any other manufacturer.

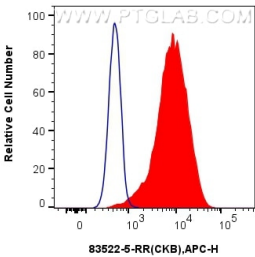
Selected Validation Data



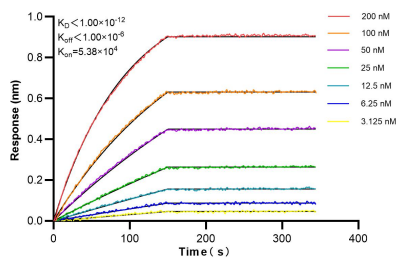
Various lysates were subjected to SDS PAGE followed by western blot with 83522-5-RR (CKB antibody) at dilution of 1:1500 incubated at room temperature for 1.5 hours.



WB result of sg-CKB antibody (83522-5-RR; 1:10000; room temperature for 1.5 hours) with wild-type and sg-CKB transfected HAP1 cells.



1x10<sup>6</sup> HeLa cells were intracellularly stained with 0.25 ug CKB Recombinant Antibody (83522-5-RR, Clone:240418D2) and APC-Conjugated AffiniPure Goat Anti-Rabbit IgG(H+L)(red), or 0.25 ug Isotype Control (blue). Cells were fixed with 4% PFA and permeabilized with Flow Cytometry Perm Buffer (PF00011-C).



Biolayer interferometry (BLI) kinetic assays of 83522-5-RR against Human CKB were performed. The affinity constant is below 1 pM.