

For Research Use Only

CEACAM1/CD66a Recombinant monoclonal antibody, PBS Only (Detector)

Catalog Number: 83524-6-PBS



Basic Information

Catalog Number: 83524-6-PBS	GenBank Accession Number: BC014473	Purification Method: Protein A purification
Size: 100ug, Concentration: 1 mg/ml by Nanodrop;	GeneID (NCBI): 634	CloneNo.: 253148A11
Source: Rabbit	UNIPROT ID: P13688	
Isotype: IgG	Full Name: carcinoembryonic antigen-related cell adhesion molecule 1 (biliary glycoprotein)	
Immunogen Catalog Number: EG7064	Calculated MW: 526 aa, 58 kDa	

Applications

Tested Applications:
Cytometric bead array, Sandwich ELISA, Indirect ELISA

Species Specificity:
human

Product Information

83524-6-PBS targets CEACAM1/CD66a as part of a matched antibody pair:

MP00520-4: 83524-7-PBS capture and 83524-6-PBS detection (validated in Cytometric bead array)

MP00520-5: 83524-9-PBS capture and 83524-6-PBS detection (validated in Sandwich ELISA)

Unconjugated rabbit recombinant monoclonal antibody in PBS only (BSA and azide free) storage buffer at a concentration of 1 mg/mL, ready for conjugation. Created using Proteintech's proprietary in-house recombinant technology. Recombinant production enables unrivalled batch-to-batch consistency, easy scale-up, and future security of supply.

This conjugation ready format makes antibodies ideal for use in many applications including: ELISAs, multiplex assays requiring matched pairs, mass cytometry, and multiplex imaging applications. Antibody use should be optimized by the end user for each application and assay.

Storage

Storage:
Store at -80°C.
Storage Buffer:
PBS only, pH7.3

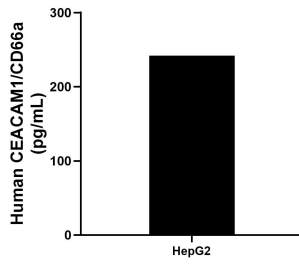
For technical support and original validation data for this product please contact:

T: 1 (888) 4PTGLAB (1-888-478-4522) (toll free in USA), or 1(312) 455-8498 (outside USA)

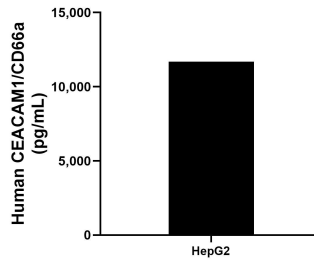
E: proteintech@ptglab.com
W: ptglab.com

This product is exclusively available under Proteintech Group brand and is not available to purchase from any other manufacturer.

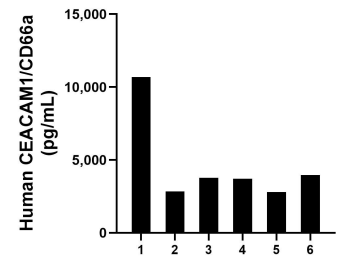
Selected Validation Data



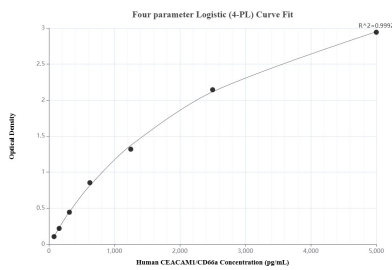
HepG2 (human hepatocellular carcinoma cells) were cultured in DMEM supplemented with 10% fetal bovine serum, 2.5 mM L-glutamine, 100 U/mL penicillin, and 100 µg/mL streptomycin sulfate. An aliquot of the cell culture supernate was removed, assayed for human CEACAM1/CD66a, and measured 241.8 pg/mL.



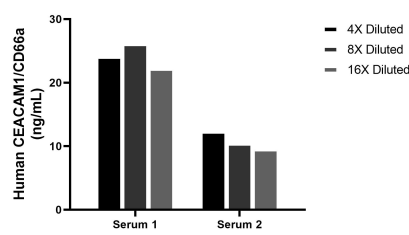
The mean CEACAM1/CD66a concentration was determined to be 11,693.8 pg/mL in HepG2 cell extract based on a 1.5 mg/mL extract load.



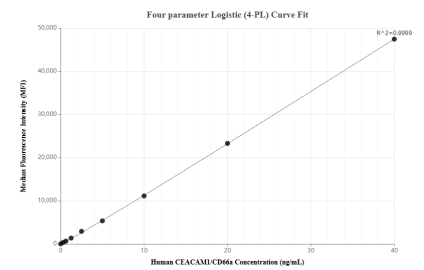
Plasma of six individual healthy human donors was measured. The human CEACAM1/CD66a concentration of detected samples was determined to be 4,624.2 ng/mL with a range of 2,787.3 - 10,691.2 pg/mL.



Sandwich ELISA standard curve of MP00520-5, Human CEACAM1/CD66a Recombinant Matched Antibody Pair - PBS only. 83524-9-PBS was coated to a plate as the capture antibody and incubated with serial dilutions of standard Eg7064. 83524-6-PBS was HRP conjugated as the detection antibody. Range: 78.1-5000 pg/mL



The mean CEACAM1/CD66a concentration was determined to be 24.1 ng/mL in human serum 1, 10.8 ng/mL in human serum 2.



Cytometric bead array standard curve of MP00520-4, CEACAM1/CD66a Recombinant Matched Antibody Pair, PBS Only. Capture antibody: 83524-7-PBS. Detection antibody: 83524-6-PBS. Standard: Eg7064. Range: 0.312-40 ng/mL