

For Research Use Only

SLC35B4 Recombinant antibody, PBS Only (Capture)



Catalog Number: 83527-3-PBS

Basic Information

Catalog Number: 83527-3-PBS	GenBank Accession Number: BC008413	Purification Method: Protein A purification
Size: 100ug , Concentration: 1 mg/ml by Nanodrop;	GeneID (NCBI): 84912	CloneNo.: 240332F10
Source: Rabbit	UNIPROT ID: Q96950	
Isotype: IgG	Full Name: solute carrier family 35, member B4	
Immunogen Catalog Number: AG22669		

Applications

Tested Applications:
WB, Cytometric bead array, Indirect ELISA

Species Specificity:
human

Product Information

83527-3-PBS targets SLC35B4 as part of a matched antibody pair:

MP00497-1: 83527-3-PBS capture and 83527-2-PBS detection (validated in Cytometric bead array)

Unconjugated rabbit recombinant monoclonal antibody in PBS only (BSA and azide free) storage buffer at a concentration of 1 mg/mL, ready for conjugation. Created using Proteintech's proprietary in-house recombinant technology. Recombinant production enables unrivalled batch-to-batch consistency, easy scale-up, and future security of supply.

This conjugation ready format makes antibodies ideal for use in many applications including: ELISAs, multiplex assays requiring matched pairs, mass cytometry, and multiplex imaging applications. Antibody use should be optimized by the end user for each application and assay.

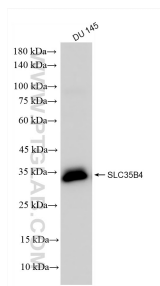
Storage

Storage:
Store at -80°C.
Storage Buffer:
PBS Only

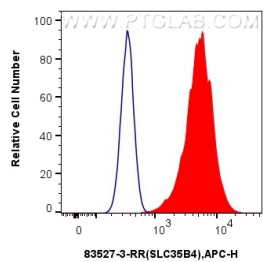
For technical support and original validation data for this product please contact:
T: 1 (888) 4PTGLAB (1-888-478-4522) (toll free in USA), or 1(312) 455-8498 (outside USA)
E: proteintech@ptglab.com
W: ptglab.com

This product is exclusively available under Proteintech Group brand and is not available to purchase from any other manufacturer.

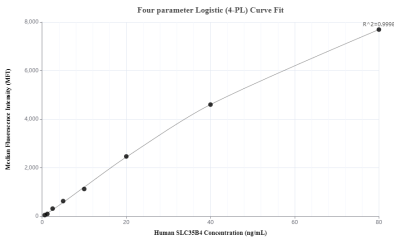
Selected Validation Data



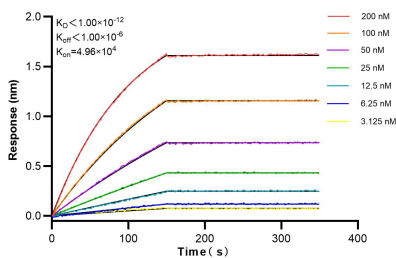
DU 145 cells were subjected to SDS PAGE followed by western blot with 83527-3-RR (SLC35B4 antibody) at dilution of 1:3000 incubated at room temperature for 1.5 hours. This data was developed using the same antibody clone with 83527-3-PBS in a different storage buffer formulation.



1x10⁶ HepG2 cells were intracellularly stained with 0.25 ug SLC35b4 Recombinant Antibody (83527-3-RR, Clone:240332F10) and APC-Conjugated AffiniPure Goat Anti-Rabbit IgG(H+L) (red), or 0.25 ug Isotype Control (blue). Cells were fixed with 4% PFA and permeabilized with Flow Cytometry Perm Buffer (PF00011-C). This data was developed using the same antibody clone with 83527-3-PBS in a different storage buffer formulation.



Cytometric bead array standard curve of MP00497-1, SLC35B4 Recombinant Matched Antibody Pair, PBS Only. Capture antibody: 83527-3-PBS. Detection antibody: 83527-2-PBS. Standard: Ag22669. Range: 0.625-80 ng/mL



Biolayer interferometry (BLI) kinetic assays of 83527-3-RR against Human SLC35B4 were performed. The affinity constant is below 1 pM.