

For Research Use Only

SLC35B4 Recombinant antibody

Catalog Number: 83527-3-RR



Basic Information

Catalog Number: 83527-3-RR	GenBank Accession Number: BC008413	Purification Method: Protein A purification
Size: 100ul , Concentration: 1000 ug/ml by Nanodrop;	GeneID (NCBI): 84912	CloneNo.: 240332F10
Source: Rabbit	UNIPROT ID: Q969S0	Recommended Dilutions: WB 1:1000-1:6000
Isotype: IgG	Full Name: solute carrier family 35, member B4	
Immunogen Catalog Number: AG22669	Observed MW: 35-37 kDa	

Applications

Tested Applications: WB, FC (Intra), ELISA	Positive Controls: WB : DU 145 cells,
Species Specificity: human	

Background Information

SLC35B4 (solute carrier family 35 member B4), also known as YEA. It is expected to be located in the endoplasmic reticulum membrane, which is ubiquitinated in placenta and brain. SLC35B4 is a glycosyltransferase, which transports nucleotide sugars from the cytoplasm where they are synthesized, to the Golgi apparatus where they are utilized in the synthesis of glycoproteins, glycolipids, and proteoglycans (PMID: 15911612). Belongs to the nucleotide-sugar transporter family. SLC35B subfamily. The molecular weight of SLC35B4 is 37 kDa.

Storage

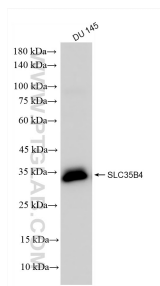
Storage:
Store at -20°C. Stable for one year after shipment.
Storage Buffer:
PBS with 0.02% sodium azide and 50% glycerol pH 7.3.
Aliquoting is unnecessary for -20°C storage

*** 20ul sizes contain 0.1% BSA

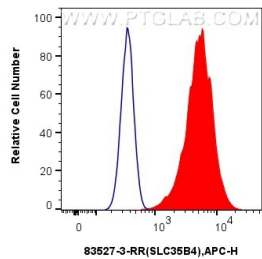
For technical support and original validation data for this product please contact:
T: 1 (888) 4PTGLAB (1-888-478-4522) (toll free in USA), or 1(312) 455-8498 (outside USA)
E: proteintech@ptglab.com
W: ptglab.com

This product is exclusively available under Proteintech Group brand and is not available to purchase from any other manufacturer.

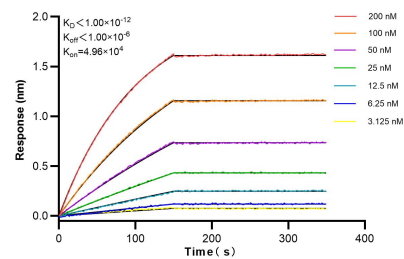
Selected Validation Data



DU 145 cells were subjected to SDS PAGE followed by western blot with 83527-3-RR (SLC35B4 antibody) at dilution of 1:3000 incubated at room temperature for 1.5 hours.



1x10⁶ HepG2 cells were intracellularly stained with 0.25 ug Slc35b4 Recombinant Antibody (83527-3-RR, Clone:240332F10) and APC-Conjugated Goat Anti-Rabbit IgG(H+L)(red), or 0.25 ug Isotype Control (blue). Cells were fixed with 4% PFA and permeabilized with Flow Cytometry Perm Buffer (PF00011-C).



Biolayer interferometry (BLI) kinetic assays of 83527-3-RR against Human SLC35B4 were performed. The affinity constant is below 1 pM.