

SYNPO2L Recombinant antibody, PBS Only (Capture)

Catalog Number: 83532-3-PBS

Basic Information

Catalog Number: 83532-3-PBS	GenBank Accession Number: BC142635	Purification Method: Protein A purification
Size: 100ug , Concentration: 1 mg/ml by Nanodrop;	GeneID (NCBI): 79933	CloneNo.: 240523F12
Source: Rabbit	UNIPROT ID: Q9H987	
Isotype: IgG	Full Name: synaptopodin 2-like	
Immunogen Catalog Number: AG34027	Calculated MW: 977 aa, 102 kDa	

Applications

Tested Applications:
Cytometric bead array, Indirect ELISA, IF/ICC

Species Specificity:
human

Product Information

83532-3-PBS targets SYNPO2L as part of a matched antibody pair:

MP00513-1: 83532-3-PBS capture and 83532-1-PBS detection (validated in Cytometric bead array)

MP00513-2: 83532-3-PBS capture and 83532-4-PBS detection (validated in Cytometric bead array)

MP00513-3: 83532-3-PBS capture and 83532-2-PBS detection (validated in Cytometric bead array)

Unconjugated rabbit recombinant monoclonal antibody in PBS only (BSA and azide free) storage buffer at a concentration of 1 mg/mL, ready for conjugation. Created using Proteintech's proprietary in-house recombinant technology. Recombinant production enables unrivalled batch-to-batch consistency, easy scale-up, and future security of supply.

This conjugation ready format makes antibodies ideal for use in many applications including: ELISAs, multiplex assays requiring matched pairs, mass cytometry, and multiplex imaging applications. Antibody use should be optimized by the end user for each application and assay.

Storage

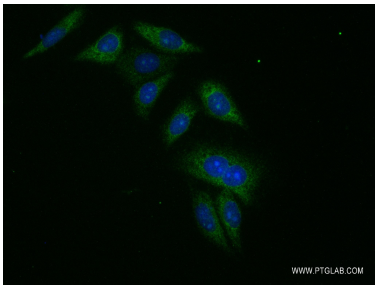
Storage:
Store at -80°C.

Storage Buffer:
PBS Only

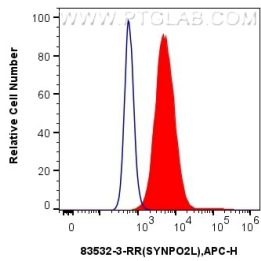
For technical support and original validation data for this product please contact:
T: 1 (888) 4PTGLAB (1-888-478-4522) (toll free in USA), or 1(312) 455-8498 (outside USA)
E: proteintech@ptglab.com
W: ptglab.com

This product is exclusively available under Proteintech Group brand and is not available to purchase from any other manufacturer.

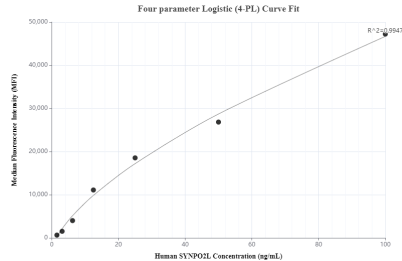
Selected Validation Data



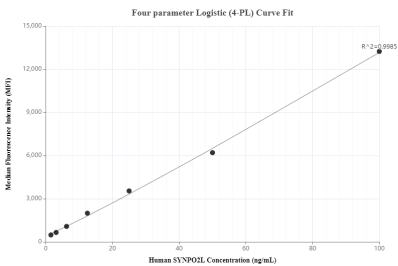
Immunofluorescent analysis of (-20°C Ethanol) fixed HepG2 cells using SYNPO2L antibody (83532-3-RR, Clone: 240523F12) at dilution of 1:200 and CoraLite®488-Conjugated AffiniPure Goat Anti-Rabbit IgG(H+L) (SA00013-2). This data was developed using the same antibody clone with 83532-3-PBS in a different storage buffer formulation.



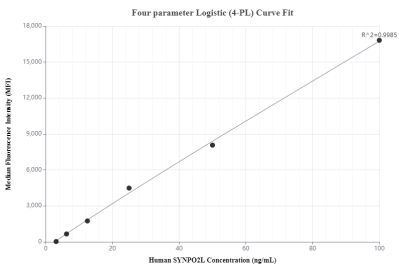
1x10⁶ Caco-2 cells were intracellularly stained with 0.25 ug SYNPO2L Recombinant antibody (83532-3-RR, Clone:240523F12) and APC-Conjugated AffiniPure Goat Anti-Rabbit IgG(H+L) (red), or 0.25 ug Isotype Control (blue). Cells were fixed with 4% PFA and permeabilized with Flow Cytometry Perm Buffer (PF00011-C). This data was developed using the same antibody clone with 83532-3-PBS in a different storage buffer formulation.



Cytometric bead array standard curve of MP00513-1, SYNPO2L Recombinant Matched Antibody Pair, PBS Only. Capture antibody: 83532-3-PBS. Detection antibody: 83532-1-PBS. Standard: Ag34027. Range: 1.56-100 ng/mL



Cytometric bead array standard curve of MP00513-2, SYNPO2L Recombinant Matched Antibody Pair, PBS Only. Capture antibody: 83532-3-PBS. Detection antibody: 83532-4-PBS. Standard: Ag34027. Range: 1.56-100 ng/mL



Cytometric bead array standard curve of MP00513-3, SYNPO2L Recombinant Matched Antibody Pair, PBS Only. Capture antibody: 83532-3-PBS. Detection antibody: 83532-2-PBS. Standard: Ag34027. Range: 3.13-100 ng/mL