

For Research Use Only

SYNPO2L Recombinant antibody

Catalog Number: 83532-3-RR



Basic Information

Catalog Number: 83532-3-RR	GenBank Accession Number: BC142635	Purification Method: Protein A purification
Size: 100ul , Concentration: 1000 ug/ml by Nanodrop;	GeneID (NCBI): 79933	CloneNo.: 240523F12
Source: Rabbit	UNIPROT ID: Q9H987	Recommended Dilutions: IF/ICC 1:50-1:500
Isotype: IgG	Full Name: synaptopodin 2-like	
Immunogen Catalog Number: AG34027	Calculated MW: 977 aa, 102 kDa	

Applications

Tested Applications: IF/ICC, FC (Intra), ELISA	Positive Controls: IF/ICC : HepG2 cells,
Species Specificity: human	

Background Information

SYNPO2L belongs to the synaptopodin family and is an actin-associated protein that may play a role in modulating actin-based shape. SYNPO2L is involved in the positive regulation of Rho protein signal transduction and the positive regulation of stress fiber assembly. Loss-of-function variants in the SYNPO2L gene are associated with atrial fibrillation (PMID: 33768119).

Storage

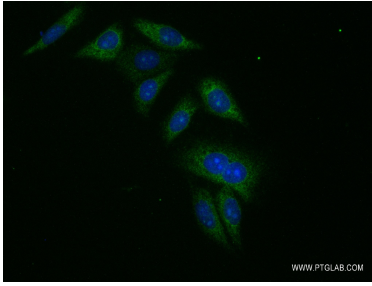
Storage:
Store at -20°C. Stable for one year after shipment.
Storage Buffer:
PBS with 0.02% sodium azide and 50% glycerol pH 7.3.
Aliquoting is unnecessary for -20°C storage

*** 20ul sizes contain 0.1% BSA

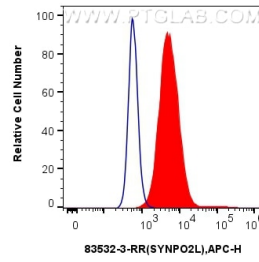
For technical support and original validation data for this product please contact:
T: 1 (888) 4PTGLAB (1-888-478-4522) (toll free in USA), or 1(312) 455-8498 (outside USA)
E: proteintech@ptglab.com
W: ptglab.com

This product is exclusively available under Proteintech Group brand and is not available to purchase from any other manufacturer.

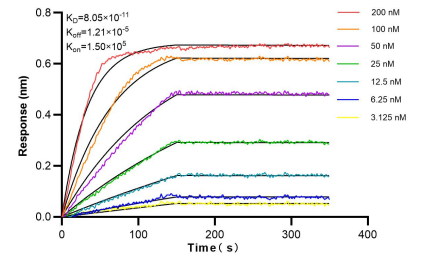
Selected Validation Data



Immunofluorescent analysis of (-20°C Ethanol) fixed HepG2 cells using SYNPO2L antibody (83532-3-RR, Clone: 240523F12) at dilution of 1:200 and CoraLite®488-Conjugated AffiniPure Goat Anti-Rabbit IgG(H+L) (SA00013-2).



1×10^6 Caco-2 cells were intracellularly stained with 0.25 μ g SYNPO2L Recombinant antibody (83532-3-RR, Clone: 240523F12) and APC-Conjugated AffiniPure Goat Anti-Rabbit IgG(H+L) (red), or 0.25 μ g Isotype Control (blue). Cells were fixed with 4% PFA and permeabilized with Flow Cytometry Perm Buffer (PF00011-C).



Biolayer interferometry (BLI) kinetic assays of 83532-3-RR against Human SYNPO2L were performed. The affinity constant is 80.5 pM.