

For Research Use Only

CD5 Recombinant antibody, PBS Only (Capture)

Catalog Number: 83543-2-PBS



Basic Information

Catalog Number:

83543-2-PBS

Size:

100ug, Concentration: 1 mg/ml by Nanodrop;

Source:

Rabbit

Isotype:

IgG

GenBank Accession Number:

NM_014207.4

GeneID (NCBI):

921

ENSEMBL Gene ID:

ENSG00000110448

UNIPROT ID:

P06127

Full Name:

CD5 molecule

Calculated MW:

55 kDa

Purification Method:

Protein A purification

CloneNo.:

240428G6

Applications

Tested Applications:

Cytometric bead array, Sandwich ELISA, Indirect ELISA, Sample test

Species Specificity:

human

Product Information

83543-2-PBS targets CD5 as part of a matched antibody pair:

MP00525-3: 83543-2-PBS capture and 83543-5-PBS detection (validated in Cytometric bead array)

MP00525-4: 83543-2-PBS capture and 83543-9-PBS detection (validated in Sandwich ELISA)

Unconjugated rabbit recombinant monoclonal antibody in PBS only (BSA and azide free) storage buffer at a concentration of 1 mg/mL, ready for conjugation. Created using Proteintech's proprietary in-house recombinant technology. Recombinant production enables unrivalled batch-to-batch consistency, easy scale-up, and future security of supply.

This conjugation ready format makes antibodies ideal for use in many applications including: ELISAs, multiplex assays requiring matched pairs, mass cytometry, and multiplex imaging applications. Antibody use should be optimized by the end user for each application and assay.

Storage

Storage:

Store at -80°C.

Storage Buffer:

PBS Only

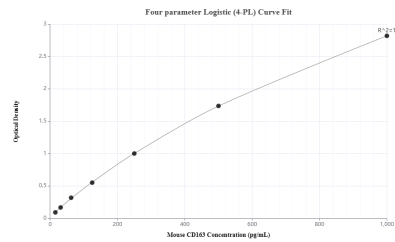
For technical support and original validation data for this product please contact:

T: 1 (888) 4PTGLAB (1-888-478-4522) (toll free in USA), or 1(312) 455-8498 (outside USA)

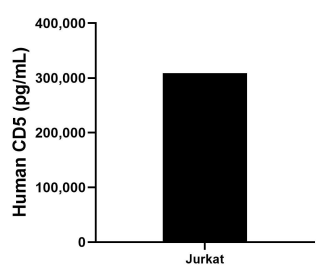
E: proteintech@ptglab.com
W: ptglab.com

This product is exclusively available under Proteintech Group brand and is not available to purchase from any other manufacturer.

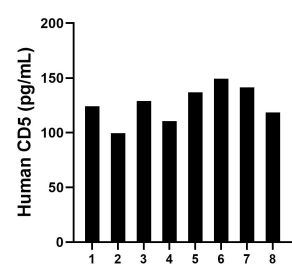
Selected Validation Data



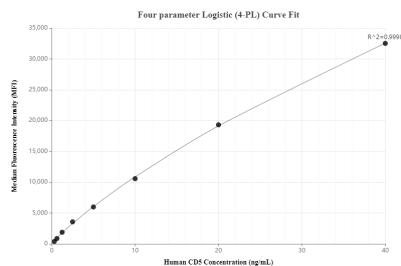
Sandwich ELISA standard curve of MP00525-4, CD5 Recombinant Matched Antibody Pair - PBS only. 83543-2-PBS was coated to a plate as the capture antibody and incubated with serial dilutions of standard Eg1119. 83543-9-PBS was HRP conjugated as the detection antibody. Range: 15.6-1000 pg/mL.



The mean human CD5 concentration was determined to be 308,651.0 pg/mL in Jurkat cell extract based on a 3.6 mg/mL extract load.



Serum of eight individual healthy human donors was measured. The human CD5 concentration of detected samples was determined to be 126.14 pg/mL with a range of 99.4 -149.2 pg/mL.



Cytometric bead array standard curve of MP00525-3, CD5 Recombinant Matched Antibody Pair, PBS Only. Capture antibody: 83543-2-PBS. Detection antibody: 83543-5-PBS. Standard: Eg1119. Range: 0.313-40 ng/mL.