

For Research Use Only

CD5 Recombinant antibody

Catalog Number: 83543-6-RR



Basic Information

Catalog Number:

83543-6-RR

Size:

100ul , Concentration: 1000 ug/ml by Nanodrop;

Source:

Rabbit

Isotype:

IgG

GenBank Accession Number:

NM_014207.4

GeneID (NCBI):

921

ENSEMBL Gene ID:

ENSG00000110448

UNIPROT ID:

P06127

Full Name:

CD5 molecule

Calculated MW:

55 kDa

Purification Method:

Protein A purification

CloneNo.:

240428A12

Recommended Dilutions:

IF/ICC 1:125-1:500

Applications

Tested Applications:

IF/ICC, ELISA

Species Specificity:

Human

Positive Controls:

IF/ICC : Jurkat cells,

Background Information

CD5 is a type I transmembrane glycoprotein of the scavenger receptor cysteine-rich family (PMID: 12403363). CD5 is expressed on a majority of thymocytes, mature T cells, B cell subsets, and peripheral blood dendritic cells (PMID: 9858516; 6156984; 10379049; 1384337). CD5 may act as a receptor in regulating T-cell proliferation. It functions as a negative regulator of TCR signaling during thymocyte development (PMID: 7542801).

Storage

Storage:

Store at -20°C. Stable for one year after shipment.

Storage Buffer:

PBS with 0.02% sodium azide and 50% glycerol pH 7.3.

Aliquoting is unnecessary for -20°C storage

*** 20ul sizes contain 0.1% BSA

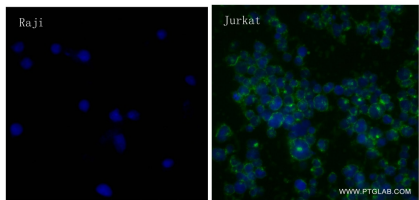
For technical support and original validation data for this product please contact:

T: 1 (888) 4PTGLAB (1-888-478-4522) (toll free in USA), or 1(312) 455-8498 (outside USA)

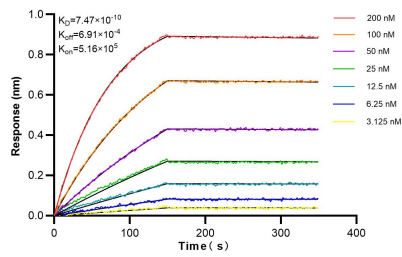
E: proteintech@ptglab.com
W: ptglab.com

This product is exclusively available under Proteintech Group brand and is not available to purchase from any other manufacturer.

Selected Validation Data



Immunofluorescent analysis of (4% PFA) fixed Raji and Jurkat cells using CD5 antibody (83543-6-RR, Clone: 240428A12) at dilution of 1:250 and CoraLite®488-Conjugated AffiniPure Goat Anti-Mouse IgG(H+L) (SA00013-1).



Biolayer interferometry (BLI) kinetic assays of 83543-6-RR against Human CD5 were performed. The affinity constant is 0.747 nM.