

For Research Use Only

GHITM Recombinant antibody, PBS Only (Detector)

Catalog Number: 83548-3-PBS



Basic Information

Catalog Number: 83548-3-PBS	GenBank Accession Number: BC010354	Purification Method: Protein A purification
Size: 100ug , Concentration: 1 mg/ml by Nanodrop;	GeneID (NCBI): 27069	CloneNo.: 240541D3
Source: Rabbit	UNIPROT ID: Q9H3K2	
Isotype: IgG	Full Name: growth hormone inducible transmembrane protein	
Immunogen Catalog Number: AG35170	Calculated MW: 345 aa, 37 kDa	
	Observed MW: 37 kDa	

Applications

Tested Applications:
WB, FC (Intra), Cytometric bead array, Indirect ELISA

Species Specificity:
human, mouse

Product Information

83548-3-PBS targets GHITM as part of a matched antibody pair:

MP00524-1: 83548-2-PBS capture and 83548-3-PBS detection (validated in Cytometric bead array)

MP00524-2: 83548-1-PBS capture and 83548-3-PBS detection (validated in Cytometric bead array)

Unconjugated rabbit recombinant monoclonal antibody in PBS only (BSA and azide free) storage buffer at a concentration of 1 mg/mL, ready for conjugation. Created using Proteintech's proprietary in-house recombinant technology. Recombinant production enables unrivalled batch-to-batch consistency, easy scale-up, and future security of supply.

This conjugation ready format makes antibodies ideal for use in many applications including: ELISAs, multiplex assays requiring matched pairs, mass cytometry, and multiplex imaging applications. Antibody use should be optimized by the end user for each application and assay.

Background Information

GHITM, also known as MIC51, TM5IM5 or DERP2, is a mitochondrial protein that localizes in the inner membrane. GHITM is involved in mitochondrial morphology in specific cristae structures and the apoptotic release of cytochrome c from the mitochondria (PMID: 18417609). The gene of GHITM maps to chromosome 10q23.1, and encodes a 345-amino-acid protein with a calculated molecular mass of 37 kDa.

Storage

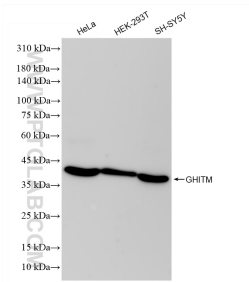
Storage:
Store at -80°C.

Storage Buffer:
PBS Only

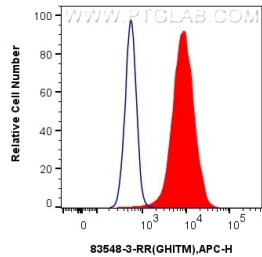
For technical support and original validation data for this product please contact:
T: 1 (888) 4PTGLAB (1-888-478-4522) (toll free in USA), or 1(312) 455-8498 (outside USA)
E: proteintech@ptglab.com
W: ptglab.com

This product is exclusively available under Proteintech Group brand and is not available to purchase from any other manufacturer.

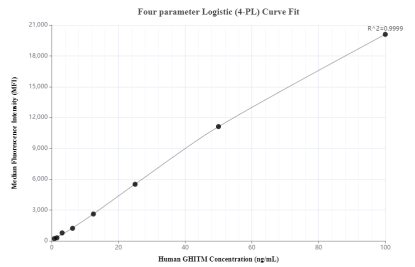
Selected Validation Data



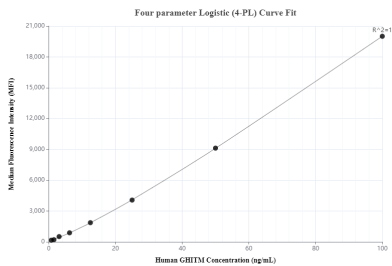
Various lysates were subjected to SDS PAGE followed by western blot with 83548-3-RR (GHITM antibody) at dilution of 1:2000 incubated at room temperature for 1.5 hours. This data was developed using the same antibody clone with 83548-3-PBS in a different storage buffer formulation.



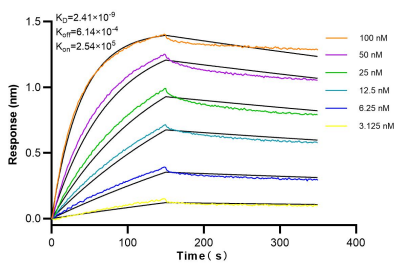
1x10⁶ HeLa cells were intracellularly stained with 0.25 ug GHITM Recombinant antibody (83548-3-RR, Clone:240541D3) and APC-Conjugated AffiniPure Goat Anti-Rabbit IgG(H+L)(red), or 0.25 ug Isotype Control (blue). Cells were fixed with 4% PFA and permeabilized with Flow Cytometry Perm Buffer (PF00011-C). This data was developed using the same antibody clone with 83548-3-PBS in a different storage buffer formulation.



Cytometric bead array standard curve of MP00524-1, GHITM Recombinant Matched Antibody Pair, PBS Only. Capture antibody: 83548-2-PBS. Detection antibody: 83548-3-PBS. Standard: Ag35170. Range: 0.78-100 ng/mL.



Cytometric bead array standard curve of MP00524-2, GHITM Recombinant Matched Antibody Pair, PBS Only. Capture antibody: 83548-1-PBS. Detection antibody: 83548-3-PBS. Standard: Ag35170. Range: 0.78-100 ng/mL.



Biolayer interferometry (BLI) kinetic assays of 83548-3-RR against Human GHITM were performed. The affinity constant is 2.41 nM.