

For Research Use Only

# GHITM Recombinant antibody

Catalog Number: 83548-3-RR



## Basic Information

### Catalog Number:

83548-3-RR

### Size:

100ul, Concentration: 1000 ug/ml by Nanodrop;

### Source:

Rabbit

### Isotype:

IgG

### Immunogen Catalog Number:

AG35170

### GenBank Accession Number:

BC010354

### GeneID (NCBI):

27069

### UNIPROT ID:

Q9H3K2

### Full Name:

growth hormone inducible transmembrane protein

### Calculated MW:

345 aa, 37 kDa

### Observed MW:

37 kDa

### Purification Method:

Protein A purification

### CloneNo.:

240541D3

### Recommended Dilutions:

WB 1:600-1:4000

## Applications

### Tested Applications:

WB, FC (Intra), ELISA

### Species Specificity:

human, mouse

### Positive Controls:

WB : HeLa cells, HEK-293T cells, SH-SY5Y cells, mouse liver tissue

## Background Information

GHITM, also known as MICS1, TMBIM5 or DERP2, is a mitochondrial protein that localizes in the inner membrane. GHITM is involved in mitochondrial morphology in specific cristae structures and the apoptotic release of cytochrome c from the mitochondria (PMID: 18417609). The gene of GHITM maps to chromosome 10q23.1, and encodes a 345-amino-acid protein with a calculated molecular mass of 37 kDa.

## Storage

### Storage:

Store at -20°C. Stable for one year after shipment.

### Storage Buffer:

PBS with 0.02% sodium azide and 50% glycerol pH 7.3.

Aliquoting is unnecessary for -20°C storage

\*\*\* 20ul sizes contain 0.1% BSA

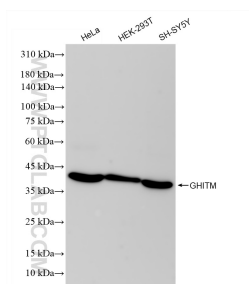
For technical support and original validation data for this product please contact:

T: 1 (888) 4PTGLAB (1-888-478-4522) (toll free in USA), or 1(312) 455-8498 (outside USA)

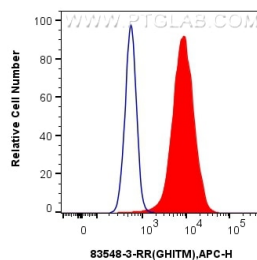
E: [proteintech@ptglab.com](mailto:proteintech@ptglab.com)  
W: [ptglab.com](http://ptglab.com)

This product is exclusively available under Proteintech Group brand and is not available to purchase from any other manufacturer.

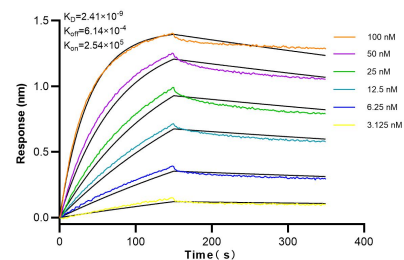
## Selected Validation Data



Various lysates were subjected to SDS PAGE followed by western blot with 83548-3-RR (GHITM antibody) at dilution of 1:2000 incubated at room temperature for 1.5 hours.



$1 \times 10^6$  HeLa cells were intracellularly stained with 0.25  $\mu$ g GHITM Recombinant antibody (83548-3-RR, Clone:240541D3) and APC-Conjugated AffiniPure Goat Anti-Rabbit IgG(H+L)(red), or 0.25  $\mu$ g Isotype Control (blue). Cells were fixed with 4% PFA and permeabilized with Flow Cytometry Perm Buffer (PF00011-C).



Biolayer interferometry (BLI) kinetic assays of 83548-3-RR against Human GHITM were performed. The affinity constant is 2.41 nM.