

For Research Use Only

Mouse Chemerin Recombinant antibody, PBS Only (Capture/Detector)

Catalog Number: 83550-2-PBS



Basic Information

Catalog Number:

83550-2-PBS

Size:

100ug, Concentration: 1 mg/ml by Nanodrop;

Source:

Rabbit

Isotype:

IgG

GenBank Accession Number:

NM_001347168.1

GeneID (NCBI):

71660

UNIPROT ID:

Q9DD06

Full Name:

retinoic acid receptor responder (tazarotene induced) 2

Calculated MW:

18 kDa

Purification Method:

Protein A purification

CloneNo.:

240355D4

Applications

Tested Applications:

Cytometric bead array, Sandwich ELISA, Indirect ELISA, Sample test

Species Specificity:

mouse

Product Information

83550-2-PBS targets Chemerin as part of a matched antibody pair:

MP00537-1: 83550-2-PBS capture and 83550-1-PBS detection (validated in Cytometric bead array)

MP00537-2: 83550-2-PBS capture and 83550-3-PBS detection (validated in Cytometric bead array)

MP00537-3: 83550-1-PBS capture and 83550-2-PBS detection (validated in Sandwich ELISA)

Unconjugated rabbit recombinant monoclonal antibody in PBS only (BSA and azide free) storage buffer at a concentration of 1 mg/mL, ready for conjugation. Created using Proteintech's proprietary in-house recombinant technology. Recombinant production enables unrivalled batch-to-batch consistency, easy scale-up, and future security of supply.

This conjugation ready format makes antibodies ideal for use in many applications including: ELISAs, multiplex assays requiring matched pairs, mass cytometry, and multiplex imaging applications. Antibody use should be optimized by the end user for each application and assay.

Storage

Storage:

Store at -80°C.

Storage Buffer:

PBS Only

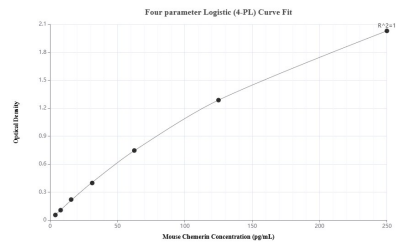
For technical support and original validation data for this product please contact:

T: 1 (888) 4PTGLAB (1-888-478-4522) (toll free in USA), or 1(312) 455-8498 (outside USA)

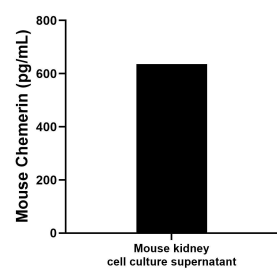
E: proteintech@ptglab.com
W: ptglab.com

This product is exclusively available under Proteintech Group brand and is not available to purchase from any other manufacturer.

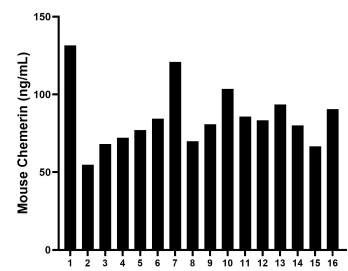
Selected Validation Data



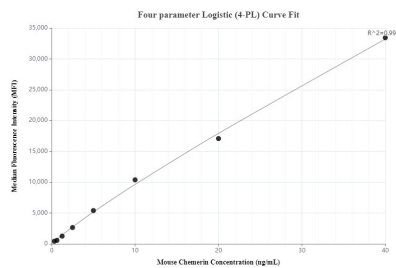
Sandwich ELISA standard curve of MP00537-3, Mouse Chemerin Recombinant Matched Antibody Pair - PBS only. 83550-1-PBS was coated to a plate as the capture antibody and incubated with serial dilutions of standard Eg0875. 83550-2-PBS was HRP conjugated as the detection antibody. Range: 3.91-250 pg/mL



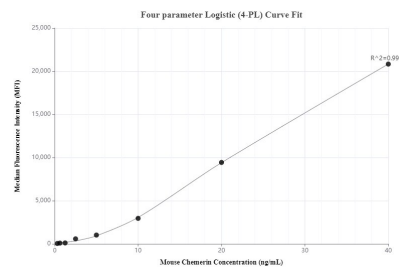
Mouse kidney tissue from one adult mouse (chopped in 1-2 mm pieces in 30 mL of medium) was cultured in RPMI supplemented with 10 % fetal calfserum and 50 μ M β -mercaptoethanol. Aliquots of the cell culture supernates were removed, assayed for levels of mouse Chemerin, and measured 636.2 pg/mL.



Serum of sixteen mice was measured. The mouse Chemerin concentration of detected samples was determined to be 85.21 ng/mL with a range of 54.83 - 131.59 ng/mL



Cytometric bead array standard curve of MP00537-1, MOUSE Chemerin Recombinant Matched Antibody Pair, PBS Only. Capture antibody: 83550-2-PBS. Detection antibody: 83550-1-PBS. Standard: Eg0875. Range: 0.313-40 ng/mL



Cytometric bead array standard curve of MP00537-2, MOUSE Chemerin Recombinant Matched Antibody Pair, PBS Only. Capture antibody: 83550-2-PBS. Detection antibody: 83550-3-PBS. Standard: Eg0875. Range: 0.313-40 ng/mL