

For Research Use Only

GPR161 Recombinant monoclonal antibody, PBS Only

Catalog Number:83557-6-PBS



Basic Information

Catalog Number:

83557-6-PBS

Size:

100ug , Concentration: 1 mg/ml by Nanodrop;

Source:

Rabbit

Isotype:

IgG

GenBank Accession Number:

BC028163

GeneID (NCBI):

23432

UNIPROT ID:

Q8N6U8

Full Name:

G protein-coupled receptor 161

Calculated MW:

529 aa, 59 kDa

Observed MW:

59 kDa

Purification Method:

Protein A purification

CloneNo.:

252242F4

Applications

Tested Applications:

WB, Indirect ELISA

Species Specificity:

human, mouse, rat

Storage

Storage:

Store at -80°C.

Storage Buffer:

PBS only, pH7.3

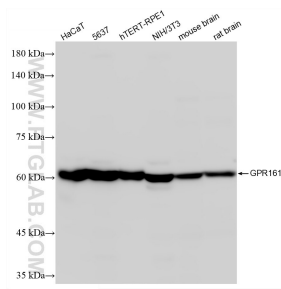
For technical support and original validation data for this product please contact:

T: 1 (888) 4PTGLAB (1-888-478-4522) (toll free in USA), or 1(312) 455-8498 (outside USA)

E: proteintech@ptglab.com
W: ptglab.com

This product is exclusively available under Proteintech Group brand and is not available to purchase from any other manufacturer.

Selected Validation Data



Various lysates were subjected to SDS PAGE followed by western blot with 83557-6-RR (GPR161 antibody) at dilution of 1:2000 incubated at room temperature for 1.5 hours. This data was developed using the same antibody clone with 83557-6-PBS in a different storage buffer formulation.