

For Research Use Only

GPR161 Recombinant monoclonal antibody

Catalog Number: 83557-6-RR



Basic Information

Catalog Number:

83557-6-RR

Size:

100ul , Concentration: 1000 µg/ml by Nanodrop;

Source:

Rabbit

Isotype:

IgG

GenBank Accession Number:

BC028163

GeneID (NCBI):

23432

UNIPROT ID:

Q8N6U8

Full Name:

G protein-coupled receptor 161

Calculated MW:

529 aa, 59 kDa

Observed MW:

59 kDa

Purification Method:

Protein A purification

CloneNo.:

252242F4

Recommended Dilutions:

WB: 1:1000-1:4000

Applications

Tested Applications:

WB, ELISA

Species Specificity:

human, mouse, rat

Positive Controls:

WB : HaCaT cells, 5637 cells, hTERT-RPE1 cells, NIH/3T3 cells, mouse brain tissue, rat brain tissue

Storage

Storage:

Store at -20°C. Stable for one year after shipment.

Storage Buffer:

PBS with 0.02% sodium azide and 50% glycerol, pH7.3

Aliquoting is unnecessary for -20°C storage

***** 20ul sizes contain 0.1%BSA**

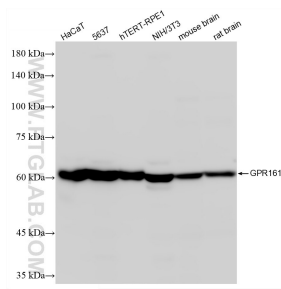
For technical support and original validation data for this product please contact:

T: 1 (888) 4PTGLAB (1-888-478-4522) (toll free in USA), or 1(312) 455-8498 (outside USA)

E: proteintech@ptglab.com
W: ptglab.com

This product is exclusively available under Proteintech Group brand and is not available to purchase from any other manufacturer.

Selected Validation Data



Various lysates were subjected to SDS PAGE followed by western blot with 83557-6-RR (GPR161 antibody) at dilution of 1:2000 incubated at room temperature for 1.5 hours.