

For Research Use Only

IL-2 Recombinant monoclonal antibody, PBS Only (Detector)

Catalog Number: 83558-6-PBS



Basic Information

Catalog Number:

83558-6-PBS

Size:

100ug , Concentration: 1 mg/ml by
Nanodrop;

Source:

Rabbit

Isotype:

IgG

Immunogen Catalog Number:

HZ-1015

GenBank Accession Number:

GeneID (NCBI):

3558

UNIPROT ID:

P60568

Full Name:

interleukin 2

Purification Method:

Protein A purification

CloneNo.:

252448F3

Applications

Tested Applications:

Cytometric bead array, Sandwich ELISA, Indirect ELISA

Species Specificity:

human

Product Information

83558-6-PBS targets IL-2 as part of a matched antibody pair:

MP00545-4: 83558-7-PBS capture and 83558-6-PBS detection (validated in Cytometric bead array)

MP00545-5: 83558-8-PBS capture and 83558-6-PBS detection (validated in Sandwich ELISA)

Unconjugated rabbit recombinant monoclonal antibody in PBS only (BSA and azide free) storage buffer at a concentration of 1 mg/mL, ready for conjugation. Created using Proteintech's proprietary in-house recombinant technology. Recombinant production enables unrivalled batch-to-batch consistency, easy scale-up, and future security of supply.

This conjugation ready format makes antibodies ideal for use in many applications including: ELISAs, multiplex assays requiring matched pairs, mass cytometry, and multiplex imaging applications. Antibody use should be optimized by the end user for each application and assay.

Storage

Storage:

Store at -80°C.

Storage Buffer:

PBS only, pH7.3

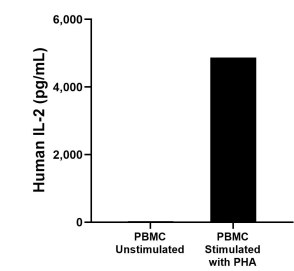
For technical support and original validation data for this product please contact:

T: 1 (888) 4PTGLAB (1-888-478-4522) (toll free
in USA), or 1(312) 455-8498 (outside USA)

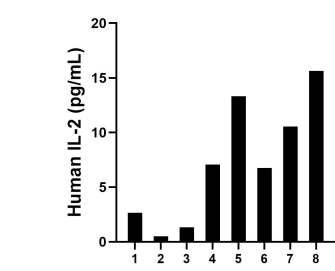
E: proteintech@ptglab.com
W: ptglab.com

This product is exclusively available under Proteintech Group brand and is not available to purchase from any other manufacturer.

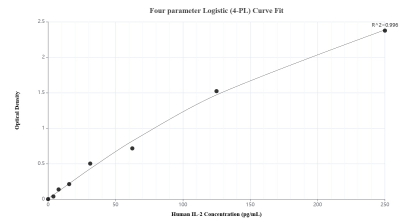
Selected Validation Data



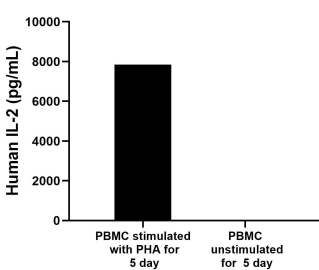
Human peripheral blood mononuclear cells (PBMC) were cultured unstimulated or stimulated with 10 µg/mL PHA for 3 days. The mean IL-2 concentration was determined to be 28.9 pg/mL in unstimulated PBMC supernatant, 4,872.0 pg/mL in PHA stimulated PBMC supernatant.



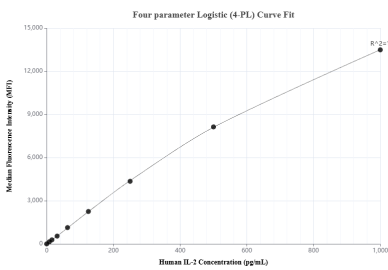
Plasma of eight individual healthy human donors was measured. The IL-2 concentration of detected samples was determined to be 7.2 pg/mL with a range of 0.5-15.6 pg/mL.



Sandwich ELISA standard curve of MP00545-5, Human IL-2 Recombinant Matched Antibody Pair - PBS only. 83558-8-PBS was coated to a plate as the capture antibody and incubated with serial dilutions of standard HZ-1015. 83558-6-PBS was HRP conjugated as the detection antibody. Range: 3.91-250 pg/mL.



Human peripheral blood mononuclear cells (PBMC) (1×10^6 cells/mL) were cultured in RPMI-1640 supplemented with 10% fetal bovine serum, 100 U/mL penicillin and 100 µg/mL streptomycin sulfate. The cell culture supernatants were stimulated or unstimulated with 10 µg/mL of PHA for 5 days. Aliquots of the cell culture supernates were removed and assayed for levels of human IL-2, and measured 7,841.4 pg/mL, 44.0 pg/mL respectively.



Cytometric bead array standard curve of MP00545-4, IL-2 Recombinant Matched Antibody Pair, PBS Only. Capture antibody: 83558-7-PBS. Detection antibody: 83558-6-PBS. Standard: HZ-1015. Range: 7.81-1000 pg/mL.