

For Research Use Only

S100A14 Recombinant antibody, PBS Only

Catalog Number: 83559-5-PBS

Featured Product



Basic Information

Catalog Number:

83559-5-PBS

Size:

100ug , Concentration: 1 mg/ml by Nanodrop;

Source:

Rabbit

Isotype:

IgG

Immunogen Catalog Number:

AG0757

GenBank Accession Number:

BC005019

GeneID (NCBI):

57402

UNIPROT ID:

Q9HCY8

Full Name:

S100 calcium binding protein A14

Calculated MW:

12 kDa

Observed MW:

12 kDa

Purification Method:

Protein A purification

CloneNo.:

240528B6

Applications

Tested Applications:

WB, IHC, FC (Intra), ELISA

Species Specificity:

human, mouse, rat

Background Information

The S100 family is a multifunctional group of EF-hand type calcium-binding proteins. S100A14 protein (previously known as BCMP84, S100A15) is a recently identified member of the S100 family. It is differentially expressed in a number of different human malignancies like ovary, breast, uterus, kidney, rectum and colon cancers, and esophageal and oral squamous cell carcinomas (OSCCs).⁷

Storage

Storage:

Store at -80°C.

Storage Buffer:

PBS only, pH7.3

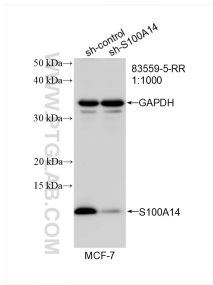
For technical support and original validation data for this product please contact:

T: 1 (888) 4PTGLAB (1-888-478-4522) (toll free in USA), or 1(312) 455-8498 (outside USA)

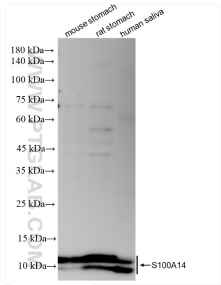
E: proteintech@ptglab.com
W: ptglab.com

This product is exclusively available under Proteintech Group brand and is not available to purchase from any other manufacturer.

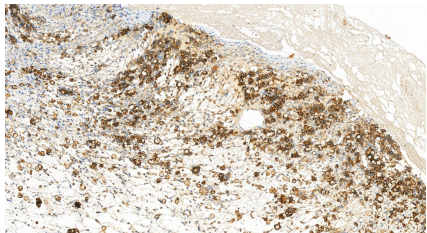
Selected Validation Data



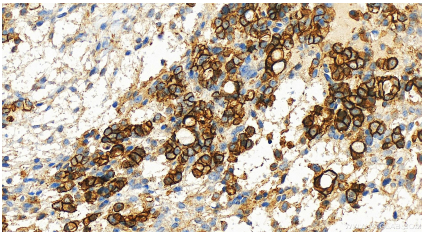
WB result of S100A14 antibody (83559-5-RR; 1:1000; incubated at room temperature for 1.5 hours) with sh-Control and sh-S100A14 transfected MCF-7 cells. This data was developed using the same antibody clone with 83559-5-PBS in a different storage buffer formulation.



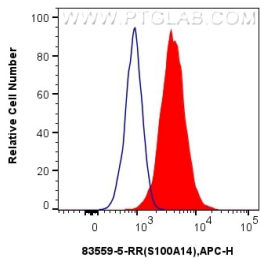
Various lysates were subjected to SDS PAGE followed by western blot with 83559-5-RR (S100A14 antibody) at dilution of 1:5000 incubated at room temperature for 1.5 hours. This data was developed using the same antibody clone with 83559-5-PBS in a different storage buffer formulation.



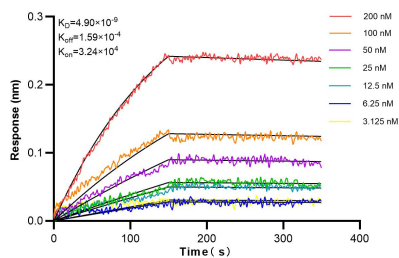
Immunohistochemical analysis of paraffin-embedded human ovary cancer tissue slide using 83559-5-RR (S100A14 antibody) at dilution of 1:200 (under 20x lens). Heat mediated antigen retrieval with Tris-EDTA buffer (pH 9.0). This data was developed using the same antibody clone with 83559-5-PBS in a different storage buffer formulation.



Immunohistochemical analysis of paraffin-embedded human ovary cancer tissue slide using 83559-5-RR (S100A14 antibody) at dilution of 1:200 (under 20x lens). Heat mediated antigen retrieval with Tris-EDTA buffer (pH 9.0). This data was developed using the same antibody clone with 83559-5-PBS in a different storage buffer formulation.



1x10⁶ HeLa cells were intracellularly stained with 0.25 ug S100A14 Recombinant antibody (83559-5-RR, Clone:240528B6) and APC-Conjugated AffiniPure Goat Anti-Rabbit IgG(H+L)(red), or 0.25 ug Isotype Control (blue). Cells were fixed with 4% PFA and permeabilized with Flow Cytometry Perm Buffer (PF00011-C). This data was developed using the same antibody clone with 83559-5-PBS in a different storage buffer formulation.



Bilayer interferometry (BLI) kinetic assays of 83559-5-RR against Human S100A14 were performed. The affinity constant is 4.90 nM.