

For Research Use Only

Mouse GSDMD Recombinant antibody, PBS Only (Capture)

Catalog Number: 83562-2-PBS



Basic Information

Catalog Number: 83562-2-PBS	GenBank Accession Number: BC029813	Purification Method: Protein A purification
Size: 100ug, Concentration: 1 mg/ml by Nanodrop;	GeneID (NCBI): 69146	CloneNo.: 240548G12
Source: Rabbit	UNIPROT ID: Q9D8T2	
Isotype: IgG	Full Name: gasdermin D	
Immunogen Catalog Number: AG34905	Calculated MW: 53 kDa	

Applications

Tested Applications:
Cytometric bead array, Sandwich ELISA, Indirect ELISA,
Sample test

Species Specificity:
mouse

Product Information

83562-2-PBS targets GSDMD as part of a matched antibody pair:

MP00534-2: 83562-2-PBS capture and 83562-3-PBS detection (validated in Cytometric bead array, Sandwich ELISA)

Unconjugated rabbit recombinant monoclonal antibody in PBS only (BSA and azide free) storage buffer at a concentration of 1 mg/mL, ready for conjugation. Created using Proteintech's proprietary in-house recombinant technology. Recombinant production enables unrivalled batch-to-batch consistency, easy scale-up, and future security of supply.

This conjugation ready format makes antibodies ideal for use in many applications including: ELISAs, multiplex assays requiring matched pairs, mass cytometry, and multiplex imaging applications. Antibody use should be optimized by the end user for each application and assay.

Storage

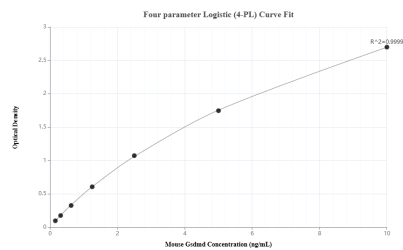
Storage:
Store at -80°C.

Storage Buffer:
PBS Only

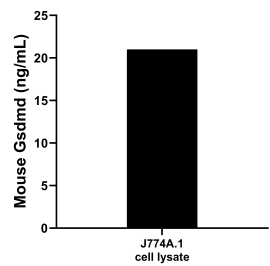
For technical support and original validation data for this product please contact:
T: 1 (888) 4PTGLAB (1-888-478-4522) (toll free in USA), or 1(312) 455-8498 (outside USA)
E: proteintech@ptglab.com
W: ptglab.com

This product is exclusively available under Proteintech Group brand and is not available to purchase from any other manufacturer.

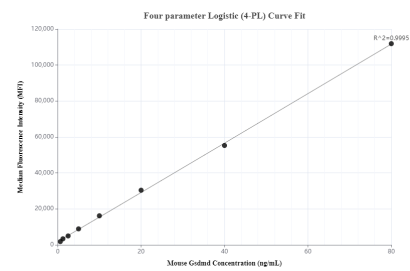
Selected Validation Data



Sandwich ELISA standard curve of MP00534-2, Mouse Gsdmd Recombinant Matched Antibody Pair - PBS only. 83562-2-PBS was coated to a plate as the capture antibody and incubated with serial dilutions of standard Ag34905. 83562-3-PBS was HRP conjugated as the detection antibody. Range: 0.16-10 ng/mL



J774A.1 cell lysate was measured. The mouse Gsdmd concentration of detected samples was determined to be 21.0 ng/mL, based on a 3.4 mg/mL lysate load.



Cytometric bead array standard curve of MP00534-2, MOUSE GSDMD Recombinant Matched Antibody Pair, PBS Only. Capture antibody: 83562-2-PBS. Detection antibody: 83562-3-PBS. Standard: Ag34905. Range: 0.625-80 ng/mL