

For Research Use Only

# Mouse GSDMD Recombinant antibody, PBS Only (Capture/Detector)

Catalog Number: 83562-3-PBS



## Basic Information

<b>Catalog Number:</b> 83562-3-PBS	<b>GenBank Accession Number:</b> BC029813	<b>Purification Method:</b> Protein A purification
<b>Size:</b> 100ug , Concentration: 1 mg/ml by Nanodrop;	<b>GeneID (NCBI):</b> 69146	<b>CloneNo.:</b> 240548B10
<b>Source:</b> Rabbit	<b>UNIPROT ID:</b> Q9D8T2	
<b>Isotype:</b> IgG	<b>Full Name:</b> gasdermin D	
<b>Immunogen Catalog Number:</b> AG34905	<b>Calculated MW:</b> 53 kDa	
	<b>Observed MW:</b> 53 kDa	

## Applications

**Tested Applications:**  
WB, IHC, IF/ICC, FC (Intra), Cytometric bead array, Sandwich ELISA, Indirect ELISA, Sample test

**Species Specificity:**  
mouse

## Product Information

83562-3-PBS targets GSDMD as part of a matched antibody pair:

MP00534-1: 83562-3-PBS capture and 83562-1-PBS detection (validated in Cytometric bead array)

MP00534-2: 83562-2-PBS capture and 83562-3-PBS detection (validated in Cytometric bead array, Sandwich ELISA)

MP00534-3: 83562-4-PBS capture and 83562-3-PBS detection (validated in Cytometric bead array)

Unconjugated rabbit recombinant monoclonal antibody in PBS only (BSA and azide free) storage buffer at a concentration of 1 mg/mL, ready for conjugation. Created using Proteintech's proprietary in-house recombinant technology. Recombinant production enables unrivalled batch-to-batch consistency, easy scale-up, and future security of supply.

This conjugation ready format makes antibodies ideal for use in many applications including: ELISAs, multiplex assays requiring matched pairs, mass cytometry, and multiplex imaging applications. Antibody use should be optimized by the end user for each application and assay.

## Background Information

GSDMD is a member of the gasdermin family. Members of this family appear to play a role in regulation of epithelial proliferation. GSDMD has been suggested to act as a tumor suppressor. Recently, GSDMD is identified as a new component of inflammasomes, and it is an executor of pyroptosis and required for interleukin-1 $\beta$  secretion. Cleavage of GSDMD by inflammatory caspases determines pyroptotic cell death.

## Storage

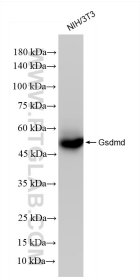
**Storage:**  
Store at -80°C.

**Storage Buffer:**  
PBS Only

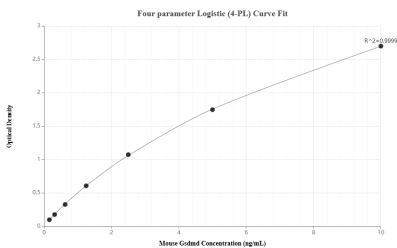
For technical support and original validation data for this product please contact:  
T: 1 (888) 4PTGLAB (1-888-478-4522) (toll free in USA), or 1(312) 455-8498 (outside USA)  
E: [proteintech@ptglab.com](mailto:proteintech@ptglab.com)  
W: [ptglab.com](http://ptglab.com)

This product is exclusively available under Proteintech Group brand and is not available to purchase from any other manufacturer.

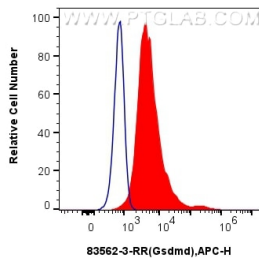
Selected Validation Data



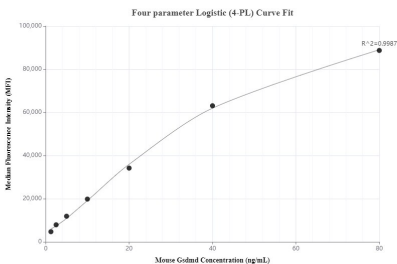
NIH/3T3 cells were subjected to SDS PAGE followed by western blot with 83562-3-RR (Gsdmd antibody) at dilution of 1:3000 incubated at room temperature for 1.5 hours. This data was developed using the same antibody clone with 83562-3-PBS in a different storage buffer formulation.



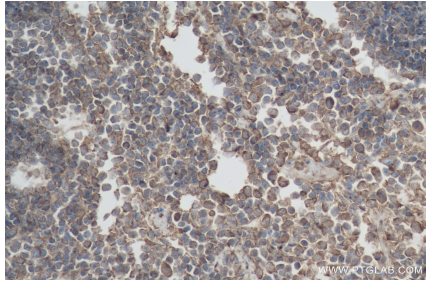
Sandwich ELISA standard curve of MP00534-2, Mouse Gsdmd Recombinant Matched Antibody Pair - PBS only. 83562-2-PBS was coated to a plate as the capture antibody and incubated with serial dilutions of standard Ag34905. 83562-3-PBS was HRP conjugated as the detection antibody. Range: 0.16-10 ng/mL



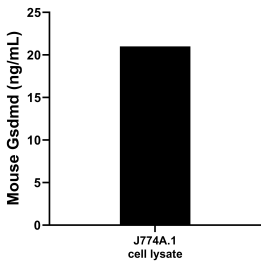
1x10<sup>6</sup> RAW 264.7 cells were intracellularly stained with 0.25 ug Gsdmd Recombinant antibody (83562-3-RR, Clone:240548B10) and APC-Conjugated AffiniPure Goat Anti-Rabbit IgG(H+L) (red), or 0.25 ug Isotype Control (blue). Cells were fixed with 4% PFA and permeabilized with Flow Cytometry Perm Buffer (PF00011-C). This data was developed using the same antibody clone with 83562-3-PBS in a different storage buffer formulation.



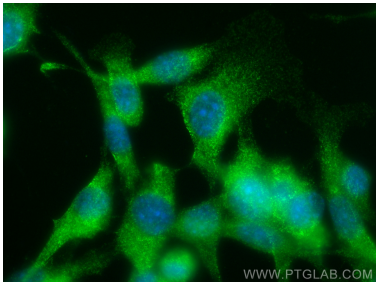
Immunohistochemical analysis of paraffin-embedded mouse spleen tissue slide using 83562-3-RR (GSDMD antibody) at dilution of 1:500 (under 10x lens). Heat mediated antigen retrieval with Tris-EDTA buffer (pH 9.0). This data was developed using the same antibody clone with 83562-3-PBS in a different storage buffer formulation.



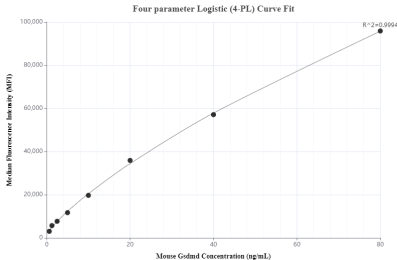
Immunohistochemical analysis of paraffin-embedded mouse spleen tissue slide using 83562-3-RR (GSDMD antibody) at dilution of 1:500 (under 40x lens). Heat mediated antigen retrieval with Tris-EDTA buffer (pH 9.0). This data was developed using the same antibody clone with 83562-3-PBS in a different storage buffer formulation.



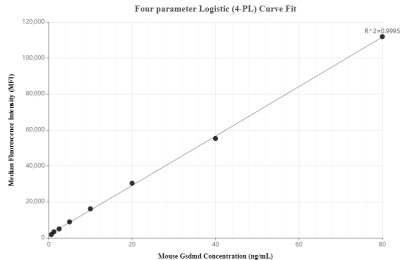
J774A.1 cell lysate was measured. The mouse Gsdmd concentration of detected samples was determined to be 21.0 ng/mL, based on a 3.4 mg/mL lysate load.



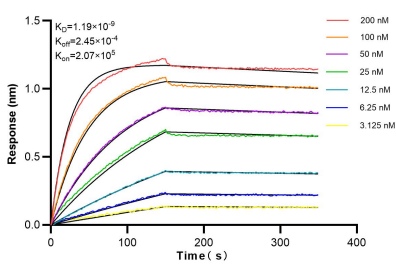
Immunofluorescent analysis of (-20°C Ethanol) fixed NIH/3T3 cells using Gsdmd antibody (83562-3-RR, Clone: 240548B10) at dilution of 1:200 and Multi-rAb CoraLite® Plus 488-Goat Anti-Rabbit Recombinant Secondary Antibody (H+L) (RGAR002). This data was developed using the same antibody clone with 83562-3-PBS in a different storage buffer formulation.



Cytometric bead array standard curve of MP00534-1, MOUSE GSDMD Recombinant Matched Antibody Pair, PBS Only. Capture antibody: 83562-3-PBS. Detection antibody: 83562-1-PBS. Standard: Ag34905. Range: 0.625-80 ng/mL



Cytometric bead array standard curve of MP00534-2, MOUSE GSDMD Recombinant Matched Antibody Pair, PBS Only. Capture antibody: 83562-2-PBS. Detection antibody: 83562-3-PBS. Standard: Ag34905. Range: 0.625-80 ng/mL



Cytometric bead array standard curve of MP00534-3, MOUSE GSDMD Recombinant Matched Antibody Pair, PBS Only. Capture antibody: 83562-4-PBS. Detection antibody: 83562-3-PBS. Standard: Ag34905. Range: 1.25-80 ng/mL.

Biolayer interferometry (BLI) kinetic assays of 83562-3-RR against Mouse Gsdmd were performed. The affinity constant is 1.19 nM.