

For Research Use Only

GSDMD Recombinant antibody

Catalog Number: 83562-3-RR



Basic Information

Catalog Number: 83562-3-RR	GenBank Accession Number: BC029813	Purification Method: Protein A purification
Size: 100ul , Concentration: 1000 ug/ml by Nanodrop;	GeneID (NCBI): 69146	CloneNo.: 240548B10
Source: Rabbit	UNIPROT ID: Q9D8T2	Recommended Dilutions: WB 1:1000-1:6000 IHC 1:250-1:1000 IF/ICC 1:50-1:500
Isotype: IgG	Full Name: gasdermin D	
Immunogen Catalog Number: AG34905	Calculated MW: 53 kDa	
	Observed MW: 53 kDa	

Applications

Tested Applications: WB, IHC, IF/ICC, FC (Intra), ELISA	Positive Controls:
Species Specificity: mouse	WB : NIH/3T3 cells, EL-4 cells, RAW 264.7 cells, J774A.1 cells
Note-IHC: suggested antigen retrieval with TE buffer pH 9.0; (*) Alternatively, antigen retrieval may be performed with citrate buffer pH 6.0	IHC : mouse spleen tissue,
	IF/ICC : NIH/3T3 cells,

Background Information

GSDMD is a member of the gasdermin family. Members of this family appear to play a role in regulation of epithelial proliferation. GSDMD has been suggested to act as a tumor suppressor. Recently, GSDMD is identified as a new component of inflammasomes, and it is an executor of pyroptosis and required for interleukin-1 β secretion. Cleavage of GSDMD by inflammatory caspases determines pyroptotic cell death.

Storage

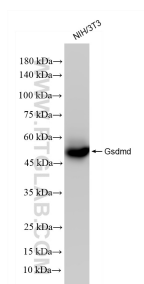
Storage:
Store at -20°C. Stable for one year after shipment.
Storage Buffer:
PBS with 0.02% sodium azide and 50% glycerol pH 7.3.
Aliquoting is unnecessary for -20°C storage

*** 20ul sizes contain 0.1% BSA

For technical support and original validation data for this product please contact:
T: 1 (888) 4PTGLAB (1-888-478-4522) (toll free in USA), or 1(312) 455-8498 (outside USA)
E: proteintech@ptglab.com
W: ptglab.com

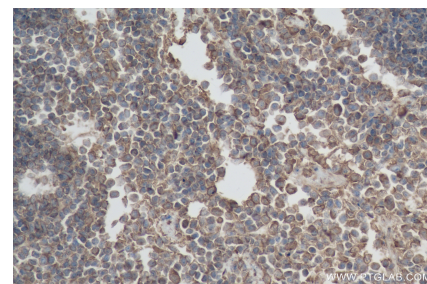
This product is exclusively available under Proteintech Group brand and is not available to purchase from any other manufacturer.

Selected Validation Data

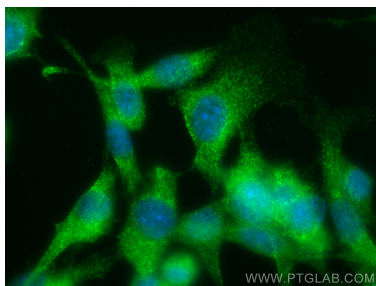


NIH/3T3 cells were subjected to SDS PAGE followed by western blot with 83562-3-RR (Gsdmd antibody) at dilution of 1:3000 incubated at room temperature for 1.5 hours.

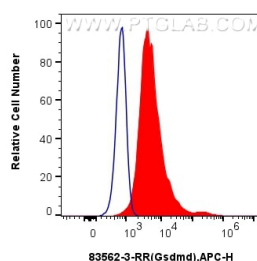
Immunohistochemical analysis of paraffin-embedded mouse spleen tissue slide using 83562-3-RR (GSDMD antibody) at dilution of 1:500 (under 10x lens). Heat mediated antigen retrieval with Tris-EDTA buffer (pH 9.0).



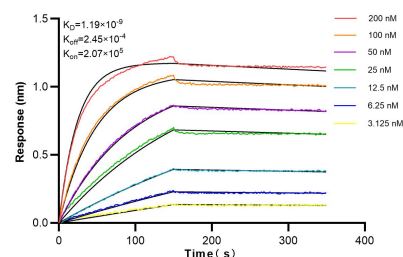
Immunohistochemical analysis of paraffin-embedded mouse spleen tissue slide using 83562-3-RR (GSDMD antibody) at dilution of 1:500 (under 40x lens). Heat mediated antigen retrieval with Tris-EDTA buffer (pH 9.0).



Immunofluorescent analysis of (-20°C Ethanol) fixed NIH/3T3 cells using Gsdmd antibody (83562-3-RR, Clone: 240548B10) at dilution of 1:200 and Multi-rAb CoraLite® Plus 488-Goat Anti-Rabbit Recombinant Secondary Antibody (H+L) (RGAR002).



1×10^6 RAW 264.7 cells were intracellularly stained with 0.25 μ g Gsdmd Recombinant antibody (83562-3-RR, Clone:240548B10) and APC-Conjugated AffiniPure Goat Anti-Rabbit IgG(H+L) (red), or 0.25 μ g Isotype Control (blue). Cells were fixed with 4% PFA and permeabilized with Flow Cytometry Perm Buffer (PF00011-C).



Bilayer interferometry (BLI) kinetic assays of 83562-3-RR against Mouse Gsdmd were performed. The affinity constant is 1.19 nM.