

For Research Use Only

# MRPL51 Recombinant antibody, PBS Only

Catalog Number: 83565-1-PBS

Featured Product



## Basic Information

Catalog Number:

83565-1-PBS

Size:

100ug, Concentration: 1 mg/ml by Nanodrop;

Source:

Rabbit

Isotype:

IgG

Immunogen Catalog Number:

AG7193

GenBank Accession Number:

BC000191

GeneID (NCBI):

51258

UNIPROT ID:

Q4U2R6

Full Name:

mitochondrial ribosomal protein L51

Calculated MW:

15 kDa

Observed MW:

12 kDa

Purification Method:

Protein A purification

CloneNo.:

240381C3

## Applications

Tested Applications:

WB, IHC, IF/ICC, ELISA

Species Specificity:

human

## Background Information

Mitochondrial ribosome protein L51 (MRPL51) is a 39S subunit protein of the mitochondrial ribosome. MRPL51 functions in the translation of genetic messages (PMID: 21730110). MRPL51 expression was positively correlated with cell cycle, DNA damage, DNA repair, epithelial-mesenchymal transition, invasion, and proliferation of LUAD cells at the singlecell level (PMID: 37323822). The calculated molecular weight of MRPL51 is 15 kDa.

## Storage

Storage:

Store at -80°C.

Storage Buffer:

PBS Only

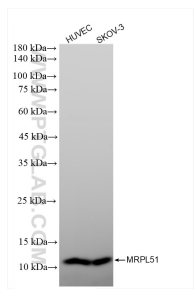
For technical support and original validation data for this product please contact:

T: 1 (888) 4PTGLAB (1-888-478-4522) (toll free in USA), or 1(312) 455-8498 (outside USA)

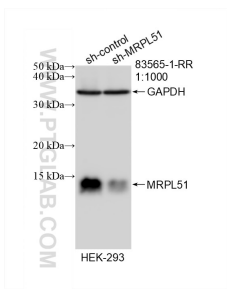
E: [proteintech@ptglab.com](mailto:proteintech@ptglab.com)  
W: [ptglab.com](http://ptglab.com)

This product is exclusively available under Proteintech Group brand and is not available to purchase from any other manufacturer.

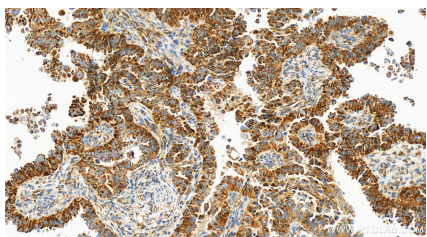
Selected Validation Data



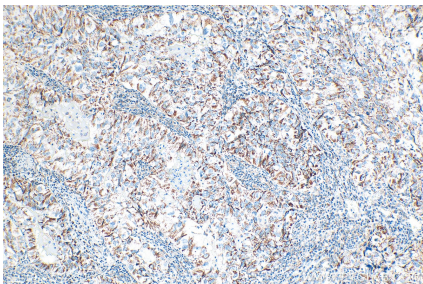
Various lysates were subjected to SDS PAGE followed by western blot with 83565-1-RR (MRPL51 antibody) at dilution of 1:10000 incubated at room temperature for 1.5 hours. This data was developed using the same antibody clone with 83565-1-PBS in a different storage buffer formulation.



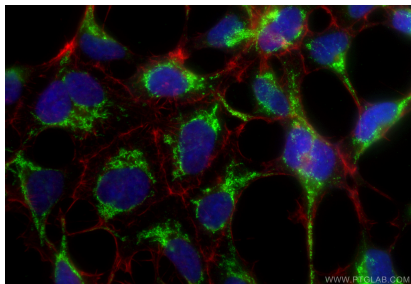
WB result of MRPL51 antibody (83565-1-RR; 1:1000; incubated at room temperature for 1.5 hours) with sh-Control and sh-MRPL51 transfected HEK-293 cells. This data was developed using the same antibody clone with 83565-1-PBS in a different storage buffer formulation.



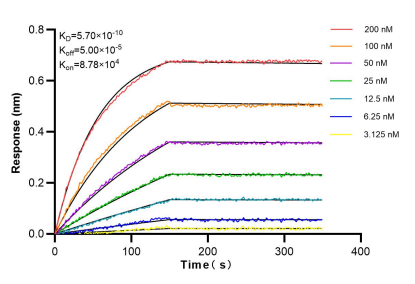
Immunohistochemical analysis of paraffin-embedded human ovarian cancer slide using 83565-1-RR (MRPL51 antibody) at dilution of 1:200 (under 20x lens). Heat mediated antigen retrieval with Tris-EDTA buffer (pH 9.0). This data was developed using the same antibody clone with 83565-1-PBS in a different storage buffer formulation.



Immunohistochemical analysis of paraffin-embedded human lung cancer tissue slide using 83565-1-RR (MRPL51 antibody) at dilution of 1:400 (under 10x lens). Heat mediated antigen retrieval with Tris-EDTA buffer (pH 9.0). This data was developed using the same antibody clone with 83565-1-PBS in a different storage buffer formulation.



Immunofluorescent analysis of (-20°C Ethanol) fixed HEK-293 cells using MRPL51 antibody (83565-1-RR, Clone: 240381C3 ) at dilution of 1:200 and Coralite®488-Conjugated Goat Anti-Rabbit IgG(H+L) (SA00013-2), CL594-Phalloidin (red). This data was developed using the same antibody clone with 83565-1-PBS in a different storage buffer formulation.



Bilayer interferometry (BLI) kinetic assays of 83565-1-RR against Human MRPL51 were performed. The affinity constant is 0.57 nM.