

For Research Use Only

MRPL51 Recombinant antibody

Catalog Number: 83565-1-RR

Featured Product



Basic Information

Catalog Number: 83565-1-RR	GenBank Accession Number: BC000191	Purification Method: Protein A purification
Size: 100ul , Concentration: 1000 ug/ml by Nanodrop;	GeneID (NCBI): 51258	CloneNo.: 240381C3
Source: Rabbit	UNIPROT ID: Q4U2R6	Recommended Dilutions: WB 1:5000-1:50000 IHC 1:200-1:800 IF/ICC 1:50-1:500
Isotype: IgG	Full Name: mitochondrial ribosomal protein L51	
Immunogen Catalog Number: AG7193	Calculated MW: 15 kDa	
	Observed MW: 12 kDa	

Applications

Tested Applications:
WB, IHC, IF/ICC, ELISA

Species Specificity:
human

Note-IHC: suggested antigen retrieval with **TE buffer pH 9.0; (*)** Alternatively, antigen retrieval may be performed with **citrate buffer pH 6.0**

Positive Controls:

WB : HUVEC cells, HEK-293 cells, SKOV-3 cells

IHC : human lung cancer tissue, human ovarian cancer

IF/ICC : HEK-293 cells,

Background Information

Mitochondrial ribosome protein L51 (MRPL51) is a 39S subunit protein of the mitochondrial ribosome. MRPL51 functions in the translation of genetic messages (PMID: 21730110). MRPL51 expression was positively correlated with cell cycle, DNA damage, DNA repair, epithelial-mesenchymal transition, invasion, and proliferation of LUAD cells at the singlecell level (PMID: 37323822). The calculated molecular weight of MRPL51 is 15 kDa.

Storage

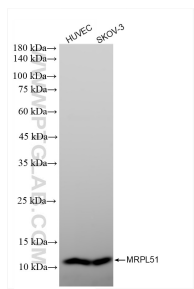
Storage:
Store at -20°C. Stable for one year after shipment.
Storage Buffer:
PBS with 0.02% sodium azide and 50% glycerol pH 7.3.
Aliquoting is unnecessary for -20°C storage

*** 20ul sizes contain 0.1% BSA

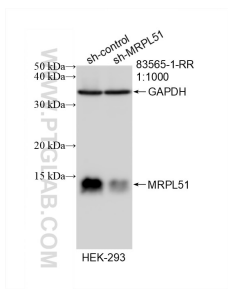
For technical support and original validation data for this product please contact:
T: 1 (888) 4PTGLAB (1-888-478-4522) (toll free in USA), or 1(312) 455-8498 (outside USA)
E: proteintech@ptglab.com
W: ptglab.com

This product is exclusively available under Proteintech Group brand and is not available to purchase from any other manufacturer.

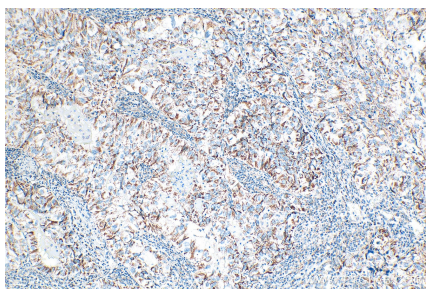
Selected Validation Data



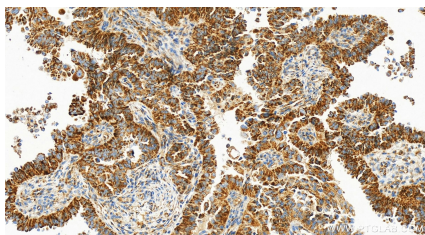
Various lysates were subjected to SDS PAGE followed by western blot with 83565-1-RR (MRPL51 antibody) at dilution of 1:10000 incubated at room temperature for 1.5 hours.



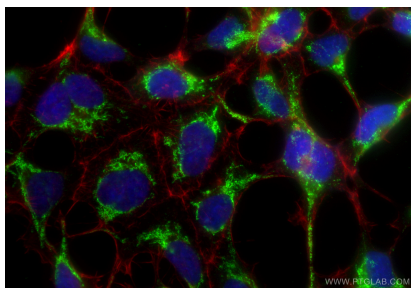
WB result of MRPL51 antibody (83565-1-RR; 1:1000; incubated at room temperature for 1.5 hours) with sh-Control and sh-MRPL51 transfected HEK-293 cells.



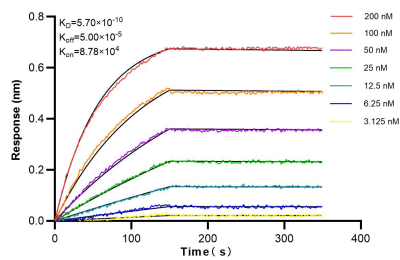
Immunohistochemical analysis of paraffin-embedded human lung cancer tissue slide using 83565-1-RR (MRPL51 antibody) at dilution of 1:400 (under 10x lens). Heat mediated antigen retrieval with Tris-EDTA buffer (pH 9.0).



Immunohistochemical analysis of paraffin-embedded human ovarian cancer slide using 83565-1-RR (MRPL51 antibody) at dilution of 1:200 (under 20x lens). Heat mediated antigen retrieval with Tris-EDTA buffer (pH 9.0).



Immunofluorescent analysis of (-20°C Ethanol) fixed HEK-293 cells using MRPL51 antibody (83565-1-RR, Clone: 240381C3) at dilution of 1:200 and CoraLite® 488-Conjugated Goat Anti-Rabbit IgG(H+L) (SA00013-2), CL594-Phalloidin (red).



Bilayer interferometry (BLI) kinetic assays of 83565-1-RR against Human MRPL51 were performed. The affinity constant is 0.57 nM.