

For Research Use Only

CORIN Recombinant antibody

Catalog Number: 83566-1-RR



Basic Information

Catalog Number: 83566-1-RR	GenBank Accession Number: BC110451	Purification Method: Protein A purification
Size: 100ul , Concentration: 1000 ug/ml by Nanodrop;	GeneID (NCBI): 10699	CloneNo.: 240339A10
Source: Rabbit	UNIPROT ID: Q9Y5Q5	Recommended Dilutions: WB 1:500-1:2000 IHC 1:50-1:500
Isotype: IgG	Full Name: corin, serine peptidase	
Immunogen Catalog Number: AG15898	Calculated MW: 1042 aa, 117 kDa	
	Observed MW: 180 kDa	

Applications

Tested Applications: WB, IHC, ELISA	Positive Controls:
Species Specificity: human, mouse, rat	WB : rat heart tissue, IHC : mouse heart tissue,
Note-IHC: suggested antigen retrieval with TE buffer pH 9.0; (*) Alternatively, antigen retrieval may be performed with citrate buffer pH 6.0	

Background Information

CORIN is a transmembrane type II serine protease expressed in cardiomyocytes that converts pro-atrial natriuretic peptide into atrial natriuretic peptide, a cardiac hormone that regulates blood pressure. CORIN can be shed into the circulation through autocleavage and metalloproteinase-mediated hydrolysis processes of the membrane form of the protein. Three different soluble fragments derived from corin molecules, with molecular masses of ~180, ~160 and ~100 kDa were described in literature (PMID: 21288900, 29387201).

Storage

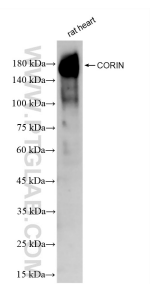
Storage:
Store at -20°C. Stable for one year after shipment.
Storage Buffer:
PBS with 0.02% sodium azide and 50% glycerol pH 7.3.
Aliquoting is unnecessary for -20°C storage

*** 20ul sizes contain 0.1% BSA

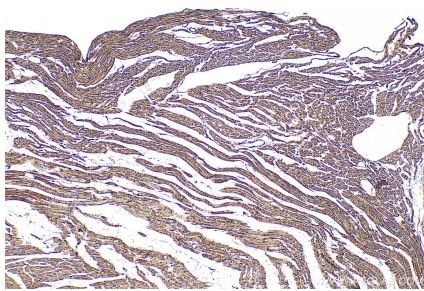
For technical support and original validation data for this product please contact:
T: 1 (888) 4PTGLAB (1-888-478-4522) (toll free in USA), or 1(312) 455-8498 (outside USA)
E: proteintech@ptglab.com
W: ptglab.com

This product is exclusively available under Proteintech Group brand and is not available to purchase from any other manufacturer.

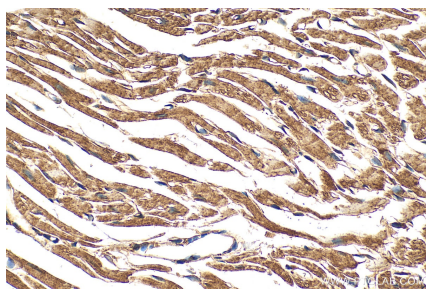
Selected Validation Data



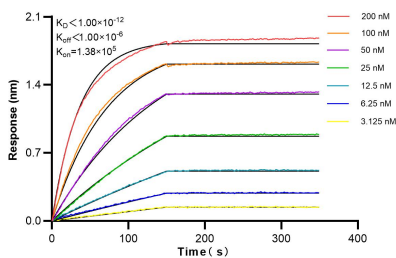
rat heart tissue were subjected to SDS PAGE followed by western blot with 83566-1-RR (CORIN antibody) at dilution of 1:1000 incubated at room temperature for 1.5 hours.



Immunohistochemical analysis of paraffin-embedded mouse heart tissue slide using 83566-1-RR (CORIN antibody) at dilution of 1:100 (under 10x lens). Heat mediated antigen retrieval with Tris-EDTA buffer (pH 9.0).



Immunohistochemical analysis of paraffin-embedded mouse heart tissue slide using 83566-1-RR (CORIN antibody) at dilution of 1:100 (under 40x lens). Heat mediated antigen retrieval with Tris-EDTA buffer (pH 9.0).



Biolayer interferometry (BLI) kinetic assays of 83566-1-RR against Human CORIN were performed. The affinity constant is below 1 pM.