

For Research Use Only

HIBCH Recombinant antibody

Catalog Number: 83569-1-RR

Featured Product



Basic Information

Catalog Number:

83569-1-RR

Size:

100ul, Concentration: 500 ug/ml by Nanodrop;

Source:

Rabbit

Isotype:

IgG

Immunogen Catalog Number:

AG6149

GenBank Accession Number:

BC067822

GeneID (NCBI):

26275

UNIPROT ID:

Q6NVY1

Full Name:

3-hydroxyisobutyryl-Coenzyme A hydrolase

Calculated MW:

43 kDa

Observed MW:

38 kDa

Purification Method:

Protein A purification

CloneNo.:

240590A3

Recommended Dilutions:

WB 1:2000-1:10000

IF/ICC 1:200-1:800

Applications

Tested Applications:

WB, IF/ICC, FC (Intra), ELISA

Species Specificity:

human, rat

Positive Controls:

WB: HEK-293 cells, HepG2 cells, HeLa cells, rat liver tissue

IF/ICC: HepG2 cells,

Background Information

HIBCH belongs to the enoyl-CoA hydratase/isomerase family. HIBCH has two isoforms with MW 43 kDa and 38 kDa. It is highly expressed in the liver and kidney, also detected in the heart, muscle and brain (at protein level), but not detected in the lung. Hydrolyzes 3-hydroxyisobutyryl-CoA (HIBYL-CoA), a saline catabolite. Has high activity toward isobutyryl-CoA. Could be an isobutyryl-CoA dehydrogenase that functions in valine catabolism. Also hydrolyzes 3-hydroxypropanoyl-CoA (PMID: 8824301).

Storage

Storage:

Store at -20°C. Stable for one year after shipment.

Storage Buffer:

PBS with 0.02% sodium azide and 50% glycerol pH 7.3.

Aliquoting is unnecessary for -20°C storage

*** 20ul sizes contain 0.1% BSA

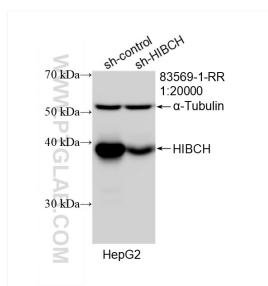
For technical support and original validation data for this product please contact:

T: 1 (888) 4PTGLAB (1-888-478-4522) (toll free in USA), or 1(312) 455-8498 (outside USA)

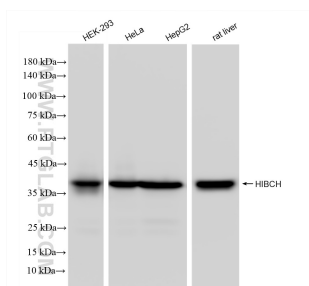
E: proteintech@ptglab.com
W: ptglab.com

This product is exclusively available under Proteintech Group brand and is not available to purchase from any other manufacturer.

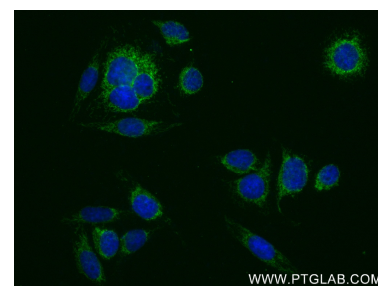
Selected Validation Data



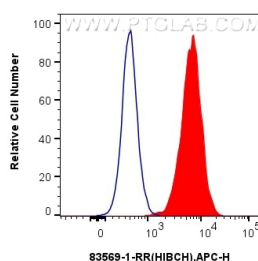
WB result of HIBCH antibody (83569-1-RR; 1:20000; incubated at room temperature for 1.5 hours) with sh-Control and sh-HIBCH transfected HepG2 cells.



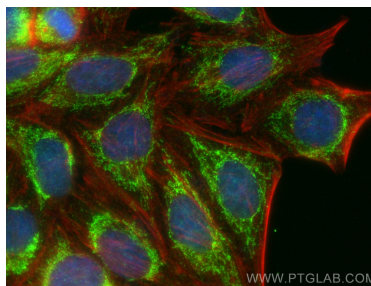
Various lysates were subjected to SDS PAGE followed by western blot with 83569-1-RR (HIBCH antibody) at dilution of 1:5000 incubated at room temperature for 1.5 hours.



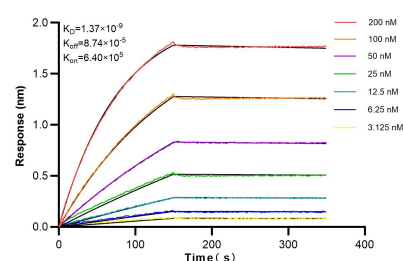
Immunofluorescent analysis of (4% PFA) fixed HepG2 cells using HIBCH antibody (83569-1-RR, Clone: 240590A3) at dilution of 1:200 and Multi-rAb Coralite® Plus 488-Goat Anti-Rabbit Recombinant Secondary Antibody (H+L) (RGAR002).



1x10⁶ HepG2 cells were intracellularly stained with 0.25 ug HIBCH Recombinant antibody (83569-1-RR, Clone:240590A3) and APC-Conjugated AffiniPure Goat Anti-Rabbit IgG(H+L)(red), or 0.25 ug Isotype Control (blue). Cells were fixed with 4% PFA and permeabilized with Flow Cytometry Perm Buffer (PF00011-C).



Immunofluorescent analysis of (4% PFA) fixed HepG2 cells using HIBCH antibody (83569-1-RR, Clone: 240590A3) at dilution of 1:400 and Multi-rAb Coralite® Plus 488-Goat Anti-Rabbit Recombinant Secondary Antibody (H+L) (RGAR002), CL594-phalloidin (red).



Bi-layer interferometry (BLI) kinetic assays of 83569-1-RR against Human HIBCH were performed. The affinity constant is 1.37 nM.