

For Research Use Only

# CD320 Recombinant antibody

Catalog Number: 83574-3-RR



## Basic Information

Catalog Number:

83574-3-RR

Size:

100ul, Concentration: 1000 ug/ml by Nanodrop;

Source:

Rabbit

Isotype:

IgG

Immunogen Catalog Number:

AG21445

GenBank Accession Number:

BC000668

GeneID (NCBI):

51293

UNIPROT ID:

Q9NPF0

Full Name:

CD320 molecule

Calculated MW:

29 kDa

Observed MW:

60-70 kDa

Purification Method:

Protein A purification

CloneNo.:

240500D4

Recommended Dilutions:

WB 1:5000-1:50000

## Applications

Tested Applications:

WB, ELISA

Species Specificity:

human

Positive Controls:

WB : HeLa cells, HEK-293T cells, K-562 cells, Raji cells

## Background Information

CD320, also known as 8D6, 8D6A or TCbLR, is a single-pass type I membrane protein containing 2 LDL-receptor class A domains. Expressed abundantly on follicular dendritic cells (FDCs), CD320 has been shown to enhance proliferation of germinal center (GC) B cells. It is the receptor for cellular uptake of transcobalamin-bound cobalamin. Defects in CD320 are the cause of methylmalonic aciduria type TCbLR (MMATC). CD320 has a calculated molecular mass of 29 kDa. This antibody raised against 84-280aa of human CD320 protein detects bands at 58 kDa and 60-70 kDa. The aberrant mobility of the protein by SDS-PAGE is probably caused by extensive complex glycosylation (PMID: 18779389; 23415653).

## Storage

Storage:

Store at -20°C. Stable for one year after shipment.

Storage Buffer:

PBS with 0.02% sodium azide and 50% glycerol pH 7.3.

Aliquoting is unnecessary for -20°C storage

\*\*\* 20ul sizes contain 0.1% BSA

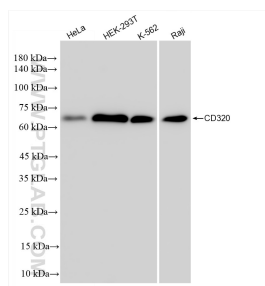
For technical support and original validation data for this product please contact:

T: 1 (888) 4PTGLAB (1-888-478-4522) (toll free in USA), or 1(312) 455-8498 (outside USA)

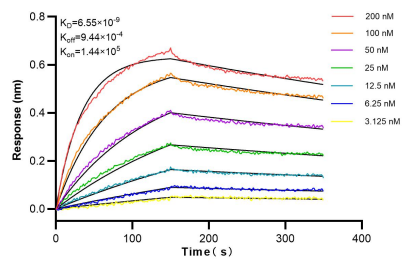
E: [proteintech@ptglab.com](mailto:proteintech@ptglab.com)  
W: [ptglab.com](http://ptglab.com)

This product is exclusively available under Proteintech Group brand and is not available to purchase from any other manufacturer.

## Selected Validation Data



Various lysates were subjected to SDS PAGE followed by western blot with 83574-3-RR (CD320 antibody) at dilution of 1:10000 incubated at room temperature for 1.5 hours.



Biolayer interferometry (BLI) kinetic assays of 83574-3-RR against Human CD320 were performed. The affinity constant is 6.55 nM.