

For Research Use Only

GLIPR1L1 Recombinant antibody, PBS Only (Detector)



Catalog Number: 83584-3-PBS

Basic Information

Catalog Number: 83584-3-PBS	GenBank Accession Number: BC014603	Purification Method: Protein A purification
Size: 100ug , Concentration: 1 mg/ml by Nanodrop;	GeneID (NCBI): 256710	CloneNo.: 240594D10
Source: Rabbit	UNIPROT ID: Q6UWM5	
Isotype: IgG	Full Name: GLI pathogenesis-related 1 like 1	
Immunogen Catalog Number: AG14852	Calculated MW: 242 aa, 27 kDa	

Applications

Tested Applications:
WB, Cytometric bead array, Indirect ELISA

Species Specificity:
human, mouse

Product Information

83584-3-PBS targets GLIPR1L1 as part of a matched antibody pair:

MP00557-1: 83584-2-PBS capture and 83584-3-PBS detection (validated in Cytometric bead array)

Unconjugated rabbit recombinant monoclonal antibody in PBS only (BSA and azide free) storage buffer at a concentration of 1 mg/mL, ready for conjugation. Created using Proteintech's proprietary in-house recombinant technology. Recombinant production enables unrivalled batch-to-batch consistency, easy scale-up, and future security of supply.

This conjugation ready format makes antibodies ideal for use in many applications including: ELISAs, multiplex assays requiring matched pairs, mass cytometry, and multiplex imaging applications. Antibody use should be optimized by the end user for each application and assay.

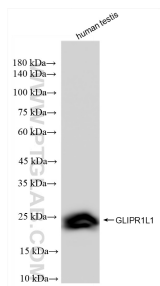
Storage

Storage:
Store at -80°C.
Storage Buffer:
PBS Only

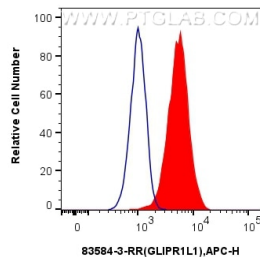
For technical support and original validation data for this product please contact:
T: 1 (888) 4PTGLAB (1-888-478-4522) (toll free in USA), or 1(312) 455-8498 (outside USA)
E: proteintech@ptglab.com
W: ptglab.com

This product is exclusively available under Proteintech Group brand and is not available to purchase from any other manufacturer.

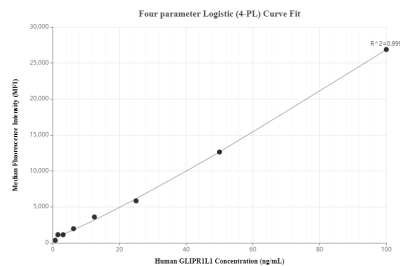
Selected Validation Data



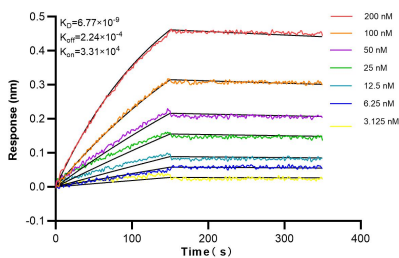
human testis tissue were subjected to SDS PAGE followed by western blot with 83584-3-RR (GLIPR1L1 antibody) at dilution of 1:5000 incubated at room temperature for 1.5 hours. This data was developed using the same antibody clone with 83584-3-PBS in a different storage buffer formulation.



1x10⁶ PC-3 cells were intracellularly stained with 0.25 ug GLIPR1L1 Recombinant antibody (83584-3-RR, Clone:240594D10) and APC-Conjugated AffiniPure Goat Anti-Rabbit IgG(H+L)(red), or 0.25 ug Isotype Control (blue). Cells were fixed with 4% PFA and permeabilized with Flow Cytometry Perm Buffer (PF00011-C). This data was developed using the same antibody clone with 83584-3-PBS in a different storage buffer formulation.



Cytometric bead array standard curve of MP00557-1, GLIPR1L1 Recombinant Matched Antibody Pair, PBS Only. Capture antibody: 83584-2-PBS. Detection antibody: 83584-3-PBS. Standard: Ag14852. Range: 0.78-100 ng/mL



Bioluminescence resonance transfer (BLI) kinetic assays of 83584-3-RR against Human GLIPR1L1 were performed. The affinity constant is 6.77 nM.