

For Research Use Only

# LUC7L Recombinant antibody, PBS Only

Catalog Number: 83585-1-PBS

Featured Product



## Basic Information

### Catalog Number:

83585-1-PBS

### Size:

100ug, Concentration: 1 mg/ml by Nanodrop;

### Source:

Rabbit

### Isotype:

IgG

### Immunogen Catalog Number:

AG9170

### GenBank Accession Number:

BC065198

### GeneID (NCBI):

55692

### UNIPROT ID:

Q9NQ29

### Full Name:

LUC7-like (S. cerevisiae)

### Calculated MW:

44 kDa

### Observed MW:

38 kDa and 44 kDa

### Purification Method:

Protein A purification

### CloneNo.:

240311B10

## Applications

### Tested Applications:

WB, IHC, IF/ICC, FC (Intra), ELISA

### Species Specificity:

human, mouse, rat

## Background Information

LUC7L, also known as LUC7L1, belongs to the Luc7 family. LUC7L encodes a putative RNA binding protein similar to the yeast Luc7p subunit of the U1 snRNP splicing complex, which is normally required for 5' splice site selection (PMID: 15474286). LUC7L is widely expressed. LUC7L has 3 isoforms with the molecular mass of 38, 42 and 44 kDa.

## Storage

### Storage:

Store at -80°C.

### Storage Buffer:

PBS Only

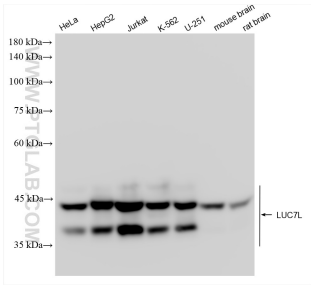
For technical support and original validation data for this product please contact:

T: 1 (888) 4PTGLAB (1-888-478-4522) (toll free in USA), or 1(312) 455-8498 (outside USA)

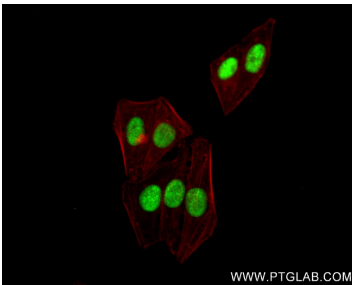
E: [proteintech@ptglab.com](mailto:proteintech@ptglab.com)  
W: [ptglab.com](http://ptglab.com)

This product is exclusively available under Proteintech Group brand and is not available to purchase from any other manufacturer.

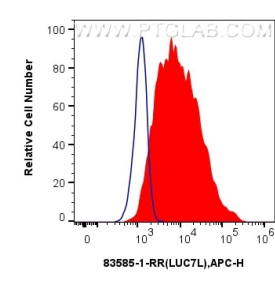
Selected Validation Data



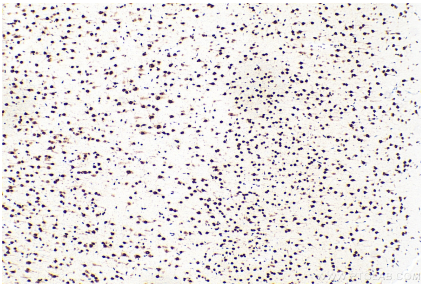
Various lysates were subjected to SDS PAGE followed by western blot with 83585-1-RR (LUC7L antibody) at dilution of 1:10000 incubated at room temperature for 1.5 hours. This data was developed using the same antibody clone with 83585-1-PBS in a different storage buffer formulation.



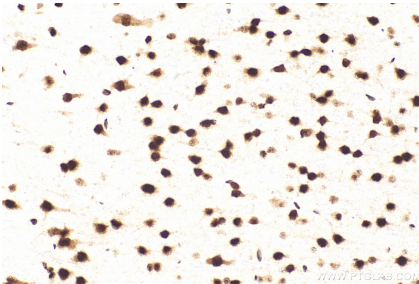
Immunofluorescent analysis of (4% PFA) fixed HepG2 cells using LUC7L antibody (83585-1-RR, Clone: 240311B10 ) at dilution of 1:300 and CoraLite® 488-Conjugated AffiniPure Goat Anti-Rabbit IgG(H+L) (SA00013-2), CL594-Phalloidin (red). This data was developed using the same antibody clone with 83585-1-PBS in a different storage buffer formulation.



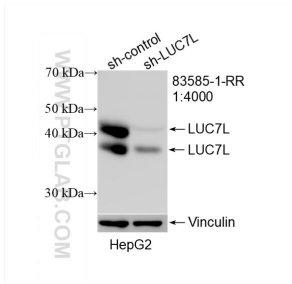
1x10<sup>6</sup> MCF-7 cells were intracellularly stained with 0.25 ug LUC7L Recombinant antibody (83585-1-RR, Clone:240311B10) and APC-Conjugated AffiniPure Goat Anti-Rabbit IgG(H+L)(red), or 0.25 ug Isotype Control (blue). Cells were fixed and permeabilized with Transcription Factor Staining Buffer Kit (PF00011). This data was developed using the same antibody clone with 83585-1-PBS in a different storage buffer formulation.



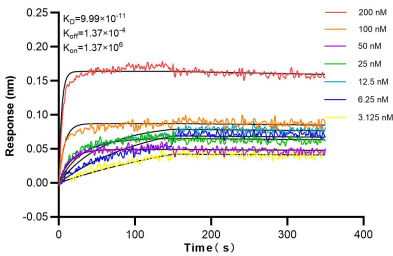
Immunohistochemical analysis of paraffin-embedded rat brain tissue slide using 83585-1-RR (LUC7L antibody) at dilution of 1:400 (under 10x lens). Heat mediated antigen retrieval with Tris-EDTA buffer (pH 9.0). This data was developed using the same antibody clone with 83585-1-PBS in a different storage buffer formulation.



Immunohistochemical analysis of paraffin-embedded rat brain tissue slide using 83585-1-RR (LUC7L antibody) at dilution of 1:400 (under 40x lens). Heat mediated antigen retrieval with Tris-EDTA buffer (pH 9.0). This data was developed using the same antibody clone with 83585-1-PBS in a different storage buffer formulation.



WB result of LUC7L antibody (83585-1-RR; 1:4000; incubated at room temperature for 1.5 hours) with sh-Control and sh-LUC7L transfected HepG2 cells. This data was developed using the same antibody clone with 83585-1-PBS in a different storage buffer formulation.



Biolayer interferometry (BLI) kinetic assays of 83585-1-RR against Human LUC7L were performed. The affinity constant is 99.9 pM.