

For Research Use Only

INTS4 Recombinant antibody

Catalog Number: 83590-6-RR



Basic Information

Catalog Number: 83590-6-RR	GenBank Accession Number: BC009995	Purification Method: Protein A purification
Size: 100ul , Concentration: 1000 ug/ml by Nanodrop;	GeneID (NCBI): 92105	CloneNo.: 240579F7
Source: Rabbit	UNIPROT ID: Q96HW7	Recommended Dilutions: WB 1:5000-1:50000 IHC 1:500-1:2000 IF/ICC 1:125-1:500
Isotype: IgG	Full Name: integrator complex subunit 4	
Immunogen Catalog Number: AG9116	Calculated MW: 963aa, 108 kDa; 505aa, 57 kDa	
	Observed MW: 108 kDa	

Applications

Tested Applications:
WB, IHC, IF/ICC, ELISA

Species Specificity:
human, mouse

Note-IHC: suggested antigen retrieval with TE buffer pH 9.0; (*) Alternatively, antigen retrieval may be performed with citrate buffer pH 6.0

Positive Controls:

WB : HepG2 cells, MCF-7 cells, Jurkat cells, HeLa cells, NIH/3T3 cells, mouse testis tissue

IHC : human ovary cancer tissue,

IF/ICC : HeLa cells, U2OS cells

Background Information

Integrator complex subunit 4 (INTS4), a helical repeat protein, plays a key role in stabilizing nuclease domains and other components. INTS4 is a specific and conserved interaction partner of INTS9/11 heterodimer that does not interact with either subunit individually (PMID: 29471365). INTS4 plays a role in achieving a compact nuclease/pseudonuclease configuration resembling that observed for CPSF73/100 in the histone-processing machinery (PMID: 33548203).

Storage

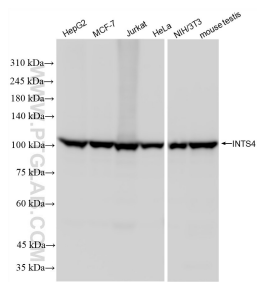
Storage:
Store at -20°C. Stable for one year after shipment.
Storage Buffer:
PBS with 0.02% sodium azide and 50% glycerol pH 7.3.
Aliquoting is unnecessary for -20°C storage

*** 20ul sizes contain 0.1% BSA

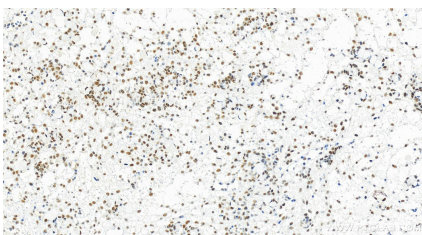
For technical support and original validation data for this product please contact:
T: 1 (888) 4PTGLAB (1-888-478-4522) (toll free in USA), or 1(312) 455-8498 (outside USA)
E: proteintech@ptglab.com
W: ptglab.com

This product is exclusively available under Proteintech Group brand and is not available to purchase from any other manufacturer.

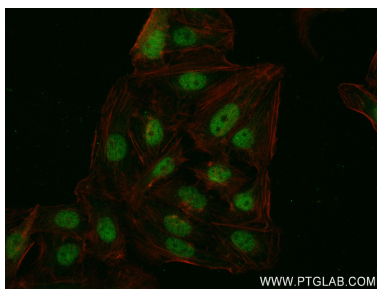
Selected Validation Data



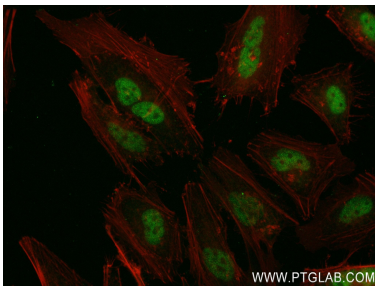
Various lysates were subjected to SDS PAGE followed by western blot with 83590-6-RR (INTS4 antibody) at dilution of 1:10000 incubated at room temperature for 1.5 hours.



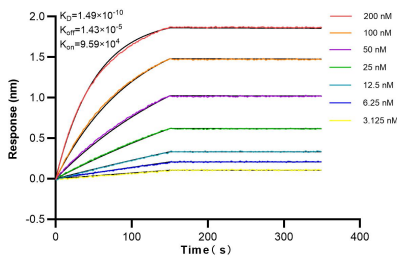
Immunohistochemical analysis of paraffin-embedded human ovary cancer tissue slide using 83590-6-RR (INTS4 antibody) at dilution of 1:1000 (under 20x lens). Heat mediated antigen retrieval with Tris-EDTA buffer (pH 9.0).



Immunofluorescent analysis of (4% PFA) fixed U2OS cells using INTS4 antibody (83590-6-RR, Clone: 240579F7) at dilution of 1:250 and CoraLite®488-Conjugated AffiniPure Goat Anti-Rabbit IgG(H+L) (SA00013-2).



Immunofluorescent analysis of (4% PFA) fixed HeLa cells using INTS4 antibody (83590-6-RR, Clone: 240579F7) at dilution of 1:250 and CoraLite®488-Conjugated AffiniPure Goat Anti-Rabbit IgG(H+L) (SA00013-2).



Biolayer interferometry (BLI) kinetic assays of 83590-6-RR against Human INTS4 were performed. The affinity constant is 0.149 nM.