

For Research Use Only

Drebrin Recombinant antibody, PBS Only (Detector)

Catalog Number: 83591-4-PBS



Basic Information

Catalog Number: 83591-4-PBS	GenBank Accession Number: BC000283	Purification Method: Protein A purification
Size: 100ug , Concentration: 1 mg/ml by Nanodrop;	GeneID (NCBI): 1627	CloneNo.: 240599H4
Source: Rabbit	ENSEMBL Gene ID: ENSG00000113758	
Isotype: IgG	UNIPROT ID: Q16643	
Immunogen Catalog Number: AG0371	Full Name: drebrin 1	
	Calculated MW: 71 kDa	

Applications

Tested Applications:
Cytometric bead array, Sandwich ELISA, Indirect ELISA, Sample test

Species Specificity:
human

Product Information

83591-4-PBS targets Drebrin as part of a matched antibody pair:

MP00585-1: 83591-3-PBS capture and 83591-4-PBS detection (validated in Cytometric bead array)

MP00585-4: 83591-6-PBS capture and 83591-4-PBS detection (validated in Sandwich ELISA)

Unconjugated rabbit recombinant monoclonal antibody in PBS only (BSA and azide free) storage buffer at a concentration of 1 mg/mL, ready for conjugation. Created using Proteintech's proprietary in-house recombinant technology. Recombinant production enables unrivalled batch-to-batch consistency, easy scale-up, and future security of supply.

This conjugation ready format makes antibodies ideal for use in many applications including: ELISAs, multiplex assays requiring matched pairs, mass cytometry, and multiplex imaging applications. Antibody use should be optimized by the end user for each application and assay.

Storage

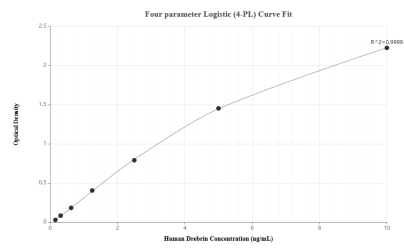
Storage:
Store at -80°C.

Storage Buffer:
PBS Only

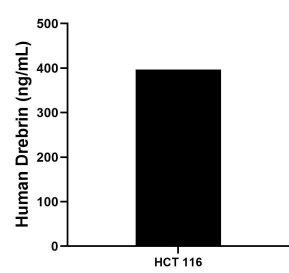
For technical support and original validation data for this product please contact:
T: 1 (888) 4PTGLAB (1-888-478-4522) (toll free in USA), or 1(312) 455-8498 (outside USA)
E: proteintech@ptglab.com
W: ptglab.com

This product is exclusively available under Proteintech Group brand and is not available to purchase from any other manufacturer.

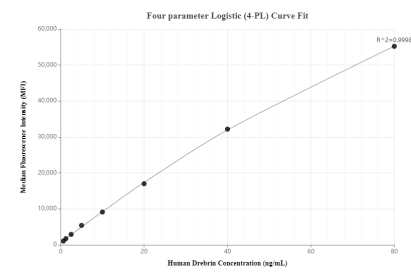
Selected Validation Data



Sandwich ELISA standard curve of MP00585-4, Human Drebrin Recombinant Matched Antibody Pair - PBS only. 83591-6-PBS was coated to a plate as the capture antibody and incubated with serial dilutions of standard Ag0371. 83591-4-PBS was HRP conjugated as the detection antibody. Range: 0.156-10 ng/mL



The mean human Drebrin concentration was determined to be 396.70 ng/mL in HCT 116 cell lysate based on a 1.3 mg/mL extract load.



Cytometric bead array standard curve of MP00585-1, Drebrin Recombinant Matched Antibody Pair, PBS Only. Capture antibody: 83591-3-PBS. Detection antibody: 83591-4-PBS. Standard: Ag0371. Range: 0.78-100 ng/mL