

For Research Use Only

SENP1 Recombinant antibody

Catalog Number: 83594-4-RR



Basic Information

Catalog Number: 83594-4-RR	GenBank Accession Number: BC045639	Purification Method: Protein A purification
Size: 100ul , Concentration: 1000 ug/ml by Nanodrop;	GeneID (NCBI): 29843	CloneNo.: 240478D3
Source: Rabbit	UNIPROT ID: Q9POU3	Recommended Dilutions: WB 1:5000-1:50000 IHC 1:400-1:1600
Isotype: IgG	Full Name: SUMO1/sentrin specific peptidase 1	
Immunogen Catalog Number: AG18028	Calculated MW: 644 aa, 73 kDa	
	Observed MW: 73 kDa	

Applications

Tested Applications:
WB, IHC, ELISA

Species Specificity:
human, mouse, rat

Note-IHC: suggested antigen retrieval with **TE buffer pH 9.0; (*)** Alternatively, antigen retrieval may be performed with **citrate buffer pH 6.0**

Positive Controls:

WB : HEK-293 cells, HL-60 cells, Jurkat cells, rat testis tissue

IHC : human ovarian cancer,

Background Information

SENP1, Sentrin-specific protease 1, is a cysteine protease that specifically targets members of the small ubiquitin-like modifier (SUMO) protein family. SENP1 catalyzes two functions in the SUMO pathway (PMID: 29506078). The first is the hydrolysis of an alpha-linked peptide bond at the C-terminal end of the small ubiquitin-like modifier (SUMO) propeptides. The second is the deconjugation of SUMO1, SUMO2 and SUMO3 from targeted proteins (PMID: 16253240). SENP1 is located in the nucleus and cytosol.

Storage

Storage:

Store at -20°C. Stable for one year after shipment.

Storage Buffer:

PBS with 0.02% sodium azide and 50% glycerol pH 7.3.

Aliquoting is unnecessary for -20°C storage

*** 20ul sizes contain 0.1% BSA

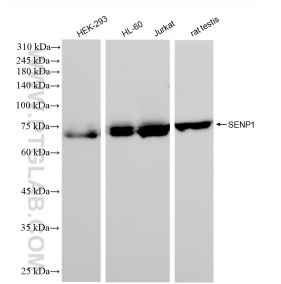
For technical support and original validation data for this product please contact:

T: 1 (888) 4PTGLAB (1-888-478-4522) (toll free in USA), or 1(312) 455-8498 (outside USA)

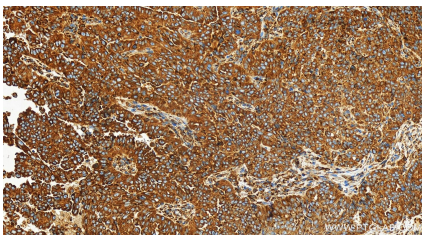
E: proteintech@ptglab.com
W: ptglab.com

This product is exclusively available under Proteintech Group brand and is not available to purchase from any other manufacturer.

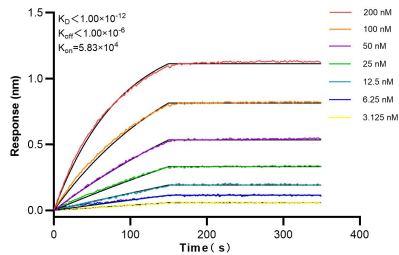
Selected Validation Data



Various lysates were subjected to SDS PAGE followed by western blot with 83594-4-RR (SENP1 antibody) at dilution of 1:10000 incubated at room temperature for 1.5 hours.



Immunohistochemical analysis of paraffin-embedded human ovarian cancer slide using 83594-4-RR (SENP1 antibody) at dilution of 1:800 (under 20x lens). Heat mediated antigen retrieval with Tris-EDTA buffer (pH 9.0).



Biolayer interferometry (BLI) kinetic assays of 83594-4-RR against Human SENP1 were performed. The affinity constant is below 1 pM.