

For Research Use Only

# BARHL2 Recombinant antibody, PBS Only (Detector)

Catalog Number: 83596-4-PBS



## Basic Information

<b>Catalog Number:</b> 83596-4-PBS	<b>GenBank Accession Number:</b> BC126439	<b>Purification Method:</b> Protein A purification
<b>Size:</b> 100ug , Concentration: 1 mg/ml by Nanodrop;	<b>GeneID (NCBI):</b> 343472	<b>CloneNo.:</b> 240558G8
<b>Source:</b> Rabbit	<b>UNIPROT ID:</b> Q9NY43	
<b>Isotype:</b> IgG	<b>Full Name:</b> BarH-like homeobox 2	
<b>Immunogen Catalog Number:</b> AG21156	<b>Calculated MW:</b> 387 aa, 42 kDa	
	<b>Observed MW:</b> 42 kDa	

## Applications

**Tested Applications:**  
WB, IF/ICC, Cytometric bead array, Indirect ELISA

**Species Specificity:**  
human, mouse, rat

## Product Information

83596-4-PBS targets BARHL2 as part of a matched antibody pair:

MP00582-2: 83596-1-PBS capture and 83596-4-PBS detection (validated in Cytometric bead array)

Unconjugated rabbit recombinant monoclonal antibody in PBS only (BSA and azide free) storage buffer at a concentration of 1 mg/mL, ready for conjugation. Created using Proteintech's proprietary in-house recombinant technology. Recombinant production enables unrivalled batch-to-batch consistency, easy scale-up, and future security of supply.

This conjugation ready format makes antibodies ideal for use in many applications including: ELISAs, multiplex assays requiring matched pairs, mass cytometry, and multiplex imaging applications. Antibody use should be optimized by the end user for each application and assay.

## Background Information

BARHL2 also named as BarH like homeobox 2 is 279 amino acid protein, which contains 1 homeobox DNA-binding domain. BARHL2 localizes in nucleus and belongs to BAR homeobox family. BARHL2 as a transcription factor binds optimally to the DNA consensus sequence. Barx2 may differentially control the expression of L1 and other target genes during embryonic development. Barx2 is expressed in several smooth muscle-containing tissues, as well as skeletal muscle, brain, tongue and esophagus.

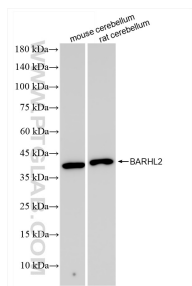
## Storage

**Storage:**  
Store at -80°C.  
**Storage Buffer:**  
PBS Only

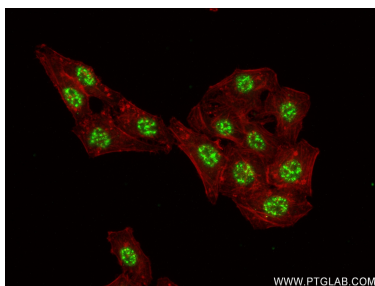
For technical support and original validation data for this product please contact:  
T: 1 (888) 4PTGLAB (1-888-478-4522) (toll free in USA), or 1(312) 455-8498 (outside USA)  
E: [proteintech@ptglab.com](mailto:proteintech@ptglab.com)  
W: [ptglab.com](http://ptglab.com)

This product is exclusively available under Proteintech Group brand and is not available to purchase from any other manufacturer.

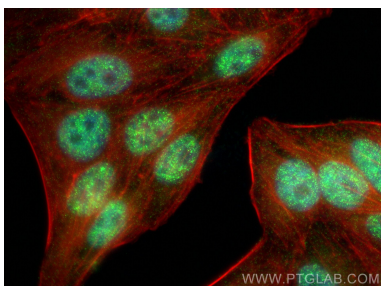
## Selected Validation Data



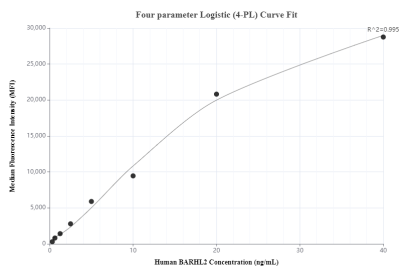
mouse cerebellum tissue were subjected to SDS PAGE followed by western blot with 83596-4-RR (BARHL2 antibody) at dilution of 1:1000 incubated at room temperature for 1.5 hours. This data was developed using the same antibody clone with 83596-4-PBS in a different storage buffer formulation.



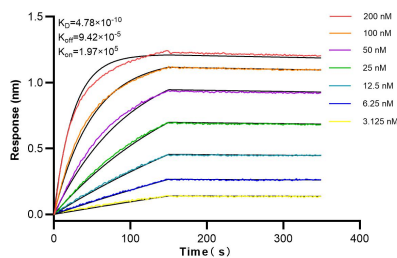
Immunofluorescent analysis of (4% PFA) fixed HepG2 cells using BARHL2 antibody (83596-4-RR, Clone: 240558G8) at dilution of 1:250 and CoraLite®488-Conjugated AffiniPure Goat Anti-Rabbit IgG(H+L) (SA00013-2), CL594-Phalloidin (red). This data was developed using the same antibody clone with 83596-4-PBS in a different storage buffer formulation.



Immunofluorescent analysis of (4% PFA) fixed HepG2 cells using BARHL2 antibody (83596-4-RR, Clone: 240558G8) at dilution of 1:1000 and CoraLite®488-Conjugated AffiniPure Goat Anti-Rabbit IgG(H+L) (SA00013-2), CL594-Phalloidin (red). This data was developed using the same antibody clone with 83596-4-PBS in a different storage buffer formulation.



Cytometric bead array standard curve of MP00582-2, BARHL2 Recombinant Matched Antibody Pair, PBS Only. Capture antibody: 83596-1-PBS. Detection antibody: 83596-4-PBS. Standard: Ag21156. Range: 0.313-40 ng/mL



Biolayer interferometry (BLI) kinetic assays of 83596-4-RR against Human BARHL2 were performed. The affinity constant is 0.478 nM.