

For Research Use Only

RUFY3 Recombinant antibody, PBS Only (Detector)



Catalog Number: 83601-2-PBS

Basic Information

Catalog Number: 83601-2-PBS	GenBank Accession Number: BC051716	Purification Method: Protein A purification
Size: 100ug , Concentration: 1 mg/ml by Nanodrop;	GeneID (NCBI): 22902	CloneNo.: 240519E7
Source: Rabbit	UNIPROT ID: Q7L099	
Isotype: IgG	Full Name: RUN and FYVE domain containing 3	
Immunogen Catalog Number: AG35558	Calculated MW: 53 kDa	

Applications

Tested Applications:
WB, Cytometric bead array, Indirect ELISA

Species Specificity:
human, mouse, rat

Product Information

83601-2-PBS targets RUFY3 as part of a matched antibody pair:

MP00602-2: 83601-1-PBS capture and 83601-2-PBS detection (validated in Cytometric bead array)

Unconjugated rabbit recombinant monoclonal antibody in PBS only (BSA and azide free) storage buffer at a concentration of 1 mg/mL, ready for conjugation. Created using Proteintech's proprietary in-house recombinant technology. Recombinant production enables unrivalled batch-to-batch consistency, easy scale-up, and future security of supply.

This conjugation ready format makes antibodies ideal for use in many applications including: ELISAs, multiplex assays requiring matched pairs, mass cytometry, and multiplex imaging applications. Antibody use should be optimized by the end user for each application and assay.

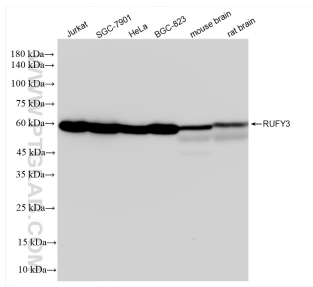
Storage

Storage:
Store at -80°C.
Storage Buffer:
PBS Only

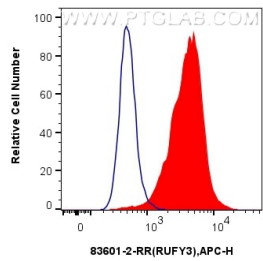
For technical support and original validation data for this product please contact:
T: 1 (888) 4PTGLAB (1-888-478-4522) (toll free in USA), or 1(312) 455-8498 (outside USA)
E: proteintech@ptglab.com
W: ptglab.com

This product is exclusively available under Proteintech Group brand and is not available to purchase from any other manufacturer.

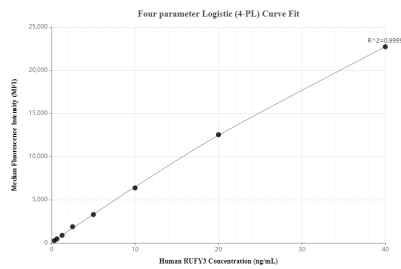
Selected Validation Data



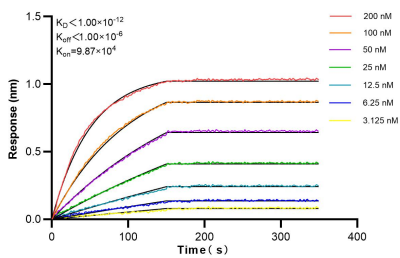
Various lysates were subjected to SDS PAGE followed by western blot with 83601-2-RR (RUFY3 antibody) at dilution of 1:10000 incubated at room temperature for 1.5 hours. This data was developed using the same antibody clone with 83601-2-PBS in a different storage buffer formulation.



1x10⁶ A431 cells were intracellularly stained with 0.25 ug RUFY3 Recombinant antibody (83601-2-RR, Clone:240519E7) and APC-Conjugated AffiniPure Goat Anti-Rabbit IgG(H+L)(red), or 0.25 ug Isotype Control (blue). Cells were fixed with 4% PFA and permeabilized with Flow Cytometry Perm Buffer (PF00011-C). This data was developed using the same antibody clone with 83601-2-PBS in a different storage buffer formulation.



Cytometric bead array standard curve of MP00602-2, RUFY3 Recombinant Matched Antibody Pair, PBS Only. Capture antibody: 83601-1-PBS. Detection antibody: 83601-2-PBS. Standard: Ag35558. Range: 0.313-40 ng/mL.



Bioluminescence resonance energy transfer (BRET) kinetic assays of 83601-2-RR against Human RUFY3 were performed. The affinity constant is below 1 pM.