

For Research Use Only

C11orf67 Recombinant antibody, PBS Only (Detector)



Catalog Number: 83603-4-PBS

Basic Information

Catalog Number: 83603-4-PBS	GenBank Accession Number: BC002752	Purification Method: Protein A purification
Size: 100ug , Concentration: 1 mg/ml by Nanodrop;	GeneID (NCBI): 28971	CloneNo.: 240530H5
Source: Rabbit	UNIPROT ID: Q9H7C9	
Isotype: IgG	Full Name: chromosome 11 open reading frame 67	
Immunogen Catalog Number: AG14258	Calculated MW: 122 aa, 13 kDa	

Applications

Tested Applications:
Cytometric bead array, Indirect ELISA, WB

Species Specificity:
rat, mouse, human

Product Information

83603-4-PBS targets C11orf67 as part of a matched antibody pair:

MP00605-1: 83603-3-PBS capture and 83603-4-PBS detection (validated in Cytometric bead array)

Unconjugated rabbit recombinant monoclonal antibody in PBS only (BSA and azide free) storage buffer at a concentration of 1 mg/mL, ready for conjugation. Created using Proteintech's proprietary in-house recombinant technology. Recombinant production enables unrivalled batch-to-batch consistency, easy scale-up, and future security of supply.

This conjugation ready format makes antibodies ideal for use in many applications including: ELISAs, multiplex assays requiring matched pairs, mass cytometry, and multiplex imaging applications. Antibody use should be optimized by the end user for each application and assay.

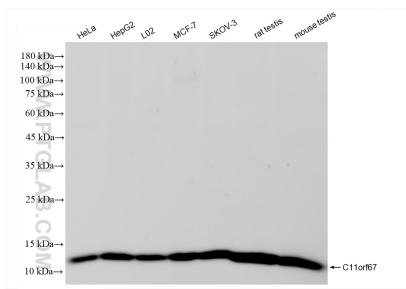
Storage

Storage:
Store at -80°C.
Storage Buffer:
PBS Only

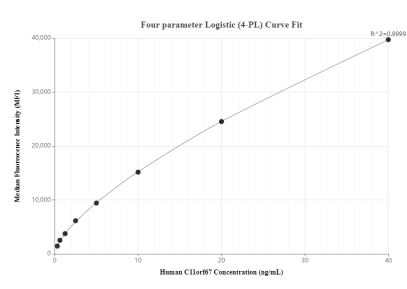
For technical support and original validation data for this product please contact:
T: 1 (888) 4PTGLAB (1-888-478-4522) (toll free in USA), or 1(312) 455-8498 (outside USA)
E: proteintech@ptglab.com
W: ptglab.com

This product is exclusively available under Proteintech Group brand and is not available to purchase from any other manufacturer.

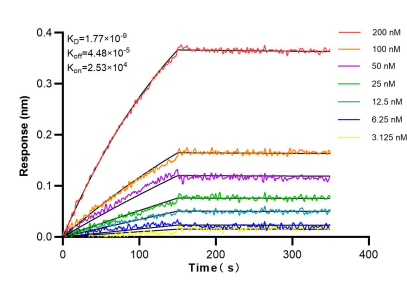
Selected Validation Data



Various lysates were subjected to SDS PAGE followed by western blot with 83603-4-RR (C11orf67 antibody) at dilution of 1:10000 incubated at room temperature for 1.5 hours. This data was developed using the same antibody clone with 83603-4-PBS in a different storage buffer formulation.



Cytometric bead array standard curve of MP00605-1, C11orf67 Recombinant Matched Antibody Pair, PBS Only. Capture antibody: 83603-3-PBS. Detection antibody: 83603-4-PBS. Standard: Ag14258. Range: 0.313-40 ng/mL.



Biolayer interferometry (BLI) kinetic assays of 83603-4-RR against Human C11orf67 were performed. The affinity constant is 0.304 nM.