

For Research Use Only

SFRS11 Recombinant antibody

Catalog Number: 83605-6-RR



Basic Information

Catalog Number:

83605-6-RR

Size:

100ul, Concentration: 1000 ug/ml by Nanodrop;

Source:

Rabbit

Isotype:

IgG

Immunogen Catalog Number:

AG24932

GenBank Accession Number:

BC040436

GeneID (NCBI):

9295

UNIPROT ID:

Q05519

Full Name:

splicing factor, arginine/serine-rich 11

Calculated MW:

483 aa, 53 kDa

Observed MW:

68 kDa

Purification Method:

Protein A purification

CloneNo.:

240465B8

Recommended Dilutions:

WB 1:5000-1:50000

IF/ICC 1:125-1:500

Applications

Tested Applications:

WB, IF/ICC, FC (Intra), ELISA

Species Specificity:

human

Positive Controls:

WB : HEK-293T cells, HepG2 cells, THP-1 cells, HeLa cells, K-562 cells

IF/ICC : HepG2 cells,

Background Information

SRS11 (Serine/arginine-rich splicing factor 11) may function in pre-mRNA splicing. It is localized in the cell nucleus and can colocalize with spliceosome components.

Storage

Storage:

Store at -20°C. Stable for one year after shipment.

Storage Buffer:

PBS with 0.02% sodium azide and 50% glycerol pH 7.3.

Aliquoting is unnecessary for -20°C storage

*** 20ul sizes contain 0.1% BSA

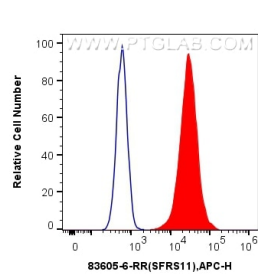
For technical support and original validation data for this product please contact:

T: 1 (888) 4PTGLAB (1-888-478-4522) (toll free in USA), or 1(312) 455-8498 (outside USA)

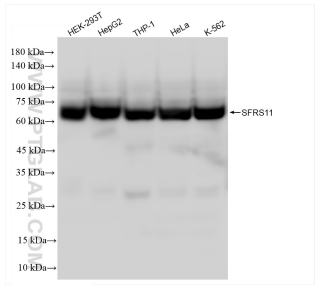
E: proteintech@ptglab.com
W: ptglab.com

This product is exclusively available under Proteintech Group brand and is not available to purchase from any other manufacturer.

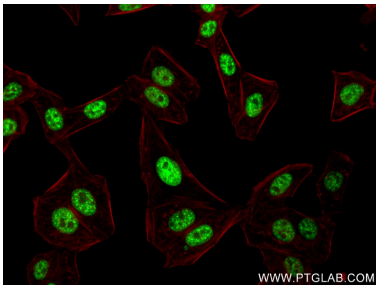
Selected Validation Data



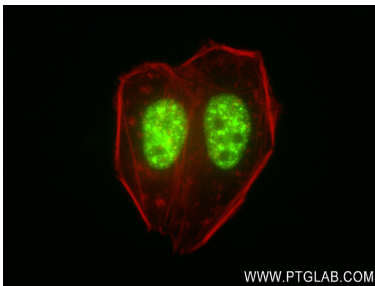
1x10⁶ HeLa cells were intracellularly stained with 0.25 ug SFRS11 Recombinant antibody (83605-6-RR, Clone:240465B8) and APC-Conjugated Goat Anti-Rabbit IgG(H+L)(red), or 0.25 ug Isotype Control (blue). Cells were fixed and permeabilized with Transcription Factor Staining Buffer Kit (PF00011).



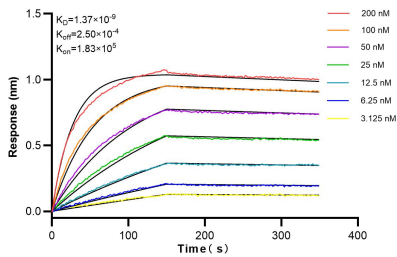
Various lysates were subjected to SDS PAGE followed by western blot with 83605-6-RR (SFRS11 antibody) at dilution of 1:10000 incubated at room temperature for 1.5 hours.



Immunofluorescent analysis of (4% PFA) fixed HepG2 cells using SFRS11 antibody (83605-6-RR, Clone: 240465B8) at dilution of 1:250 and CoraLite®488-Conjugated Goat Anti-Rabbit IgG(H+L) (SA00013-2), CL594-Phalloidin (red).



Immunofluorescent analysis of (4% PFA) fixed HepG2 cells using SFRS11 antibody (83605-6-RR, Clone: 240465B8) at dilution of 1:250 and CoraLite®488-Conjugated Goat Anti-Rabbit IgG(H+L) (SA00013-2), CL594-Phalloidin (red).



Bioluminescence resonance energy transfer (BRET) kinetic assays of 83605-6-RR against Human SFRS11 were performed. The affinity constant is 1.37 nM.