

For Research Use Only

POMP Recombinant antibody

Catalog Number: 83607-6-RR

Featured Product



Basic Information

Catalog Number:

83607-6-RR

Size:

100ul , Concentration: 1000 ug/ml by Nanodrop;

Source:

Rabbit

Isotype:

IgG

Immunogen Catalog Number:

AG6987

GenBank Accession Number:

BC003390

GeneID (NCBI):

51371

UNIPROT ID:

Q9Y244

Full Name:

proteasome maturation protein

Calculated MW:

16 kDa

Observed MW:

16 kDa

Purification Method:

Protein A purification

CloneNo.:

240563D7

Recommended Dilutions:

WB 1:5000-1:50000

Applications

Tested Applications:

WB, ELISA

Species Specificity:

human, rat

Positive Controls:

WB : HeLa cells, HepG2 cells, rat skin tissue, Jurkat cells, SW480 cells, HL-60 cells, L02 cells

Background Information

Proteasome maturation protein(POMP), is an essential factor of mammalian proteasome biogenesis. It facilitates the main steps in 20S core complex formation at the ER to coordinate the assembly process and to provide cells with freshly formed proteasomes at their site of function. A single nucleotide deletion in this gene causes an autosomal recessive skin disorder, keratosis linearis with ichthyosis congenita and sclerosing keratoderma (KLICK) syndrome.

Storage

Storage:

Store at -20°C. Stable for one year after shipment.

Storage Buffer:

PBS with 0.02% sodium azide and 50% glycerol pH 7.3.

Aliquoting is unnecessary for -20°C storage

*** 20ul sizes contain 0.1% BSA

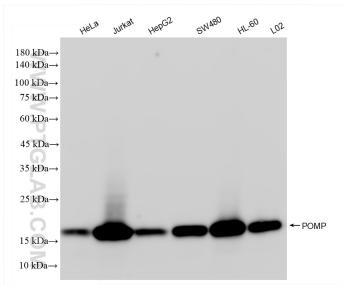
For technical support and original validation data for this product please contact:

T: 1 (888) 4PTGLAB (1-888-478-4522) (toll free in USA), or 1(312) 455-8498 (outside USA)

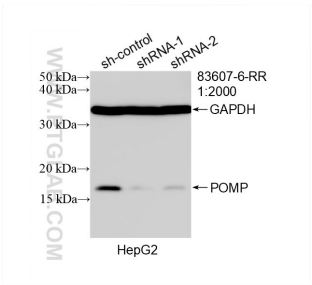
E: proteintech@ptglab.com
W: ptglab.com

This product is exclusively available under Proteintech Group brand and is not available to purchase from any other manufacturer.

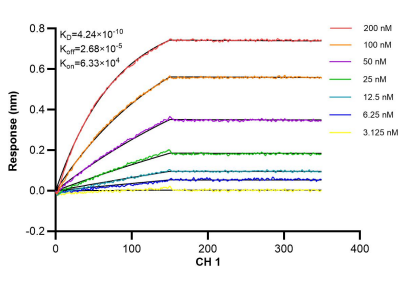
Selected Validation Data



Various lysates were subjected to SDS PAGE followed by western blot with 83607-6-RR (POMP antibody) at dilution of 1:10000 incubated at room temperature for 1.5 hours.



WB result of POMP antibody (83607-6-RR; 1:2000; incubated at room temperature for 1.5 hours) with sh-Control and sh-POMP transfected HepG2 cells.



Biolayer interferometry (BLI) kinetic assays of 83607-6-RR against Human POMP were performed. The affinity constant is 0.424 nM.