

For Research Use Only

# ATM Recombinant antibody, PBS Only

Catalog Number: 83608-5-PBS



## Basic Information

<b>Catalog Number:</b> 83608-5-PBS	<b>GenBank Accession Number:</b> BC137169	<b>Purification Method:</b> Protein A purification
<b>Size:</b> 100ug , Concentration: 1 mg/ml by Nanodrop;	<b>GeneID (NCBI):</b> 472	<b>CloneNo.:</b> 240560F5
<b>Source:</b> Rabbit	<b>UNIPROT ID:</b> Q13315	
<b>Isotype:</b> IgG	<b>Full Name:</b> ataxia telangiectasia mutated	
<b>Immunogen Catalog Number:</b> AG25920	<b>Observed MW:</b> 310-350 kDa	

## Applications

**Tested Applications:**  
WB, IHC, IF/ICC, FC (Intra), ELISA

**Species Specificity:**  
human, mouse

## Background Information

The ATM protein is a member of the phosphatidylinositol 3-kinase family of proteins that respond to DNA damage by phosphorylating key substrates involved in DNA repair and/or cell cycle control. It is involved in mitogenic signal transduction, meiotic recombination, detection of DNA damage, and cell cycle control.

## Storage

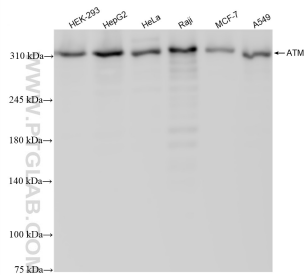
**Storage:**  
Store at -80°C.

**Storage Buffer:**  
PBS Only

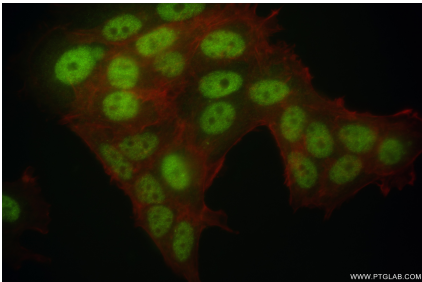
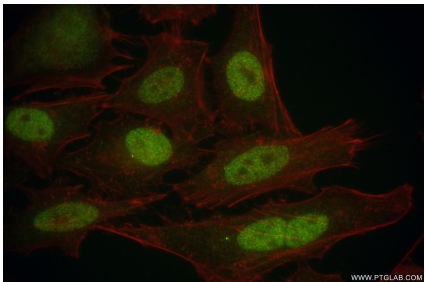
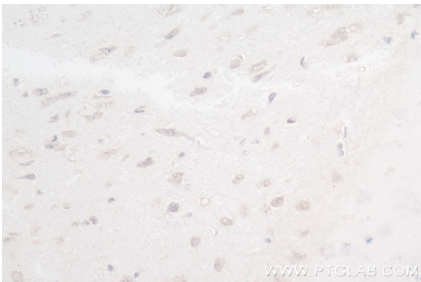
For technical support and original validation data for this product please contact:  
T: 1 (888) 4PTGLAB (1-888-478-4522) (toll free in USA), or 1(312) 455-8498 (outside USA)  
E: [proteintech@ptglab.com](mailto:proteintech@ptglab.com)  
W: [ptglab.com](http://ptglab.com)

This product is exclusively available under Proteintech Group brand and is not available to purchase from any other manufacturer.

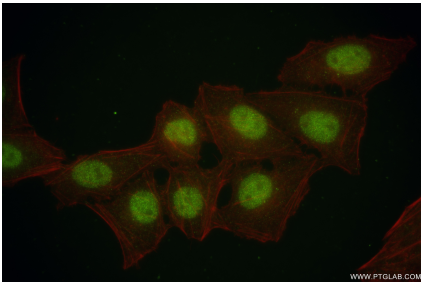
Selected Validation Data



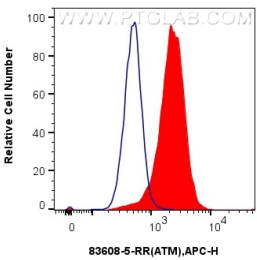
Various lysates were subjected to SDS PAGE followed by western blot with 83608-5-RR (ATM antibody) at dilution of 1:10000 incubated at room temperature for 1.5 hours. This data was developed using the same antibody clone with 83608-5-PBS in a different storage buffer formulation.



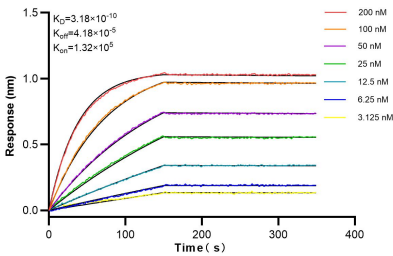
Immunofluorescent analysis of (4% PFA) fixed MCF-7 cells using ATM antibody (83608-5-RR, Clone: 240560F5) at dilution of 1:200 and CoraLite®488-Conjugated Goat Anti-Rabbit IgG(H+L) (SA00013-2), CL594-Phalloidin (red). This data was developed using the same antibody clone with 83608-5-PBS in a different storage buffer formulation.



Immunofluorescent analysis of (4% PFA) fixed HepG2 cells using ATM antibody (83608-5-RR, Clone: 240560F5) at dilution of 1:200 and CoraLite®488-Conjugated Goat Anti-Rabbit IgG(H+L) (SA00013-2), CL594-Phalloidin (red). This data was developed using the same antibody clone with 83608-5-PBS in a different storage buffer formulation.



1x10<sup>6</sup> MCF-7 cells were intracellularly stained with 0.25 ug ATM Recombinant antibody (83608-5-RR, Clone:240560F5) and APC-Conjugated AffiniPure Goat Anti-Rabbit IgG(H+L)(red), or 0.25 ug Isotype Control (blue). Cells were fixed and permeabilized with Transcription Factor Staining Buffer Kit (PF00011). This data was developed using the same antibody clone with 83608-5-PBS in a different storage buffer formulation.



Biolayer interferometry (BLI) kinetic assays of 83608-5-RR against Human ATM were performed. The affinity constant is 0.318 nM.