

For Research Use Only

Rat VEGFA Recombinant antibody, PBS Only (Detector)

Catalog Number: 83610-2-PBS



Basic Information

Catalog Number: 83610-2-PBS	GenBank Accession Number: NM_001287108.1	Purification Method: Protein A purification
Size: 100ug , Concentration: 1 mg/ml by Nanodrop;	GeneID (NCBI): 83785	CloneNo.: 240573B3
Source: Rabbit	UNIPROT ID: P16612-2	
Isotype: IgG	Full Name: vascular endothelial growth factor A	
Immunogen Catalog Number: EG0941	Calculated MW: 25 kDa	

Applications

Tested Applications:
Cytometric bead array, Sandwich ELISA, Indirect ELISA, Sample test

Species Specificity:
rat

Product Information

83610-2-PBS targets VEGFA as part of a matched antibody pair:

MP00598-3: 83610-1-PBS capture and 83610-2-PBS detection (validated in Sandwich ELISA)

Unconjugated rabbit recombinant monoclonal antibody in PBS only (BSA and azide free) storage buffer at a concentration of 1 mg/mL, ready for conjugation. Created using Proteintech's proprietary in-house recombinant technology. Recombinant production enables unrivalled batch-to-batch consistency, easy scale-up, and future security of supply.

This conjugation ready format makes antibodies ideal for use in many applications including: ELISAs, multiplex assays requiring matched pairs, mass cytometry, and multiplex imaging applications. Antibody use should be optimized by the end user for each application and assay.

Storage

Storage:
Store at -80°C.

Storage Buffer:
PBS only, pH7.3

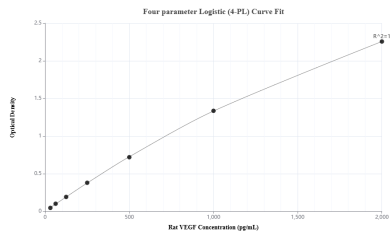
For technical support and original validation data for this product please contact:

T: 1 (888) 4PTGLAB (1-888-478-4522) (toll free in USA), or 1(312) 455-8498 (outside USA)

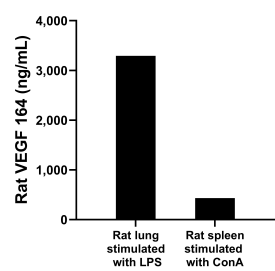
E: proteintech@ptglab.com
W: ptglab.com

This product is exclusively available under Proteintech Group brand and is not available to purchase from any other manufacturer.

Selected Validation Data



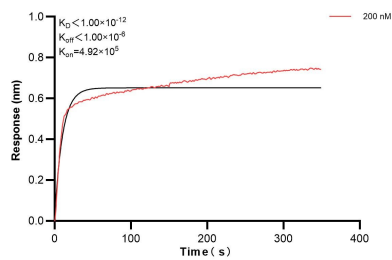
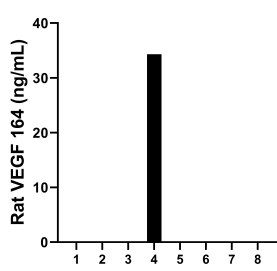
Sandwich ELISA standard curve of MP00598-3, Rat VEGF Recombinant Matched Antibody Pair - PBS only. 83610-1-PBS was coated to a plate as the capture antibody and incubated with serial dilutions of standard Ego941. 83610-2-PBS was HRP conjugated as the detection antibody. Range: 31.25-2000 pg/mL



Rat lung, cut into 1-2 mm pieces, was cultured for 4 days in 25-30 mL of RPMI supplemented with 10% fetal bovine serum and stimulated with 2.5 ng/mL LPS. The cell culture supernatant was removed, assayed for rat VEGF, and measured 3292.9 pg/mL. Rat spleen, cut into 1-2 mm pieces, was cultured for 3-4 days in 25-30 mL of RPMI supplemented with 10% fetal bovine serum and stimulated with 10 µg/mL ConA. The cell culture supernatant was removed, assayed



Serum of eight rats was measured. The VEGF concentration of one sample was determined to be 34.3 pg/mL, and the range of VEGF 164 concentration was 0 - 34.3 pg/mL



Biolayer interferometry (BLI) kinetic assays of 84610-2-PBS against Rat VEGFA were performed. The affinity constant is below 1 pM.