

For Research Use Only

STEAP2 Recombinant antibody, PBS Only (Capture)

Catalog Number: 83611-3-PBS



Basic Information

| | | |
|---|---|---|
| Catalog Number: 83611-3-PBS | GenBank Accession Number: NM_152999 | Purification Method: Protein A purification |
| Size: 100ug , Concentration: 1 mg/ml by Nanodrop; | GeneID (NCBI): 261729 | CloneNo.: 240611E5 |
| Source: Rabbit | UNIPROT ID: Q8NFT2 | |
| Isotype: IgG | Full Name: six transmembrane epithelial antigen of the prostate 2 | |
| | Calculated MW: 56 kDa | |
| | Observed MW: 48-52 kDa | |

Applications

Tested Applications:
WB, IF/ICC, FC (Intra), Cytometric bead array, Indirect ELISA

Species Specificity:
human

Product Information

83611-3-PBS targets STEAP2 as part of a matched antibody pair.

MP00600-3: 83611-3-PBS capture and 83611-5-PBS detection (validated in Cytometric bead array)

Unconjugated rabbit recombinant monoclonal antibody in PBS only (BSA and azide free) storage buffer at a concentration of 1 mg/mL, ready for conjugation. Created using Proteintech's proprietary in-house recombinant technology. Recombinant production enables unrivalled batch-to-batch consistency, easy scale-up, and future security of supply.

This conjugation ready format makes antibodies ideal for use in many applications including: ELISAs, multiplex assays requiring matched pairs, mass cytometry, and multiplex imaging applications. Antibody use should be optimized by the end user for each application and assay.

Background Information

STEAP2, also named as PCANAP1 and STAMP1, belongs to the STEAP family. It is a metalloreductase that has the ability to reduce both Fe³⁺ to Fe²⁺ and Cu²⁺ to Cu¹⁺. STEAP2 uses NAD⁺ as acceptor.

Storage

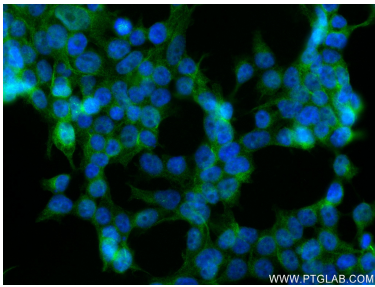
Storage:
Store at -80°C.

Storage Buffer:
PBS Only

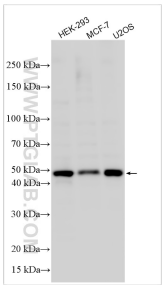
For technical support and original validation data for this product please contact:
T: 1 (888) 4PTGLAB (1-888-478-4522) (toll free in USA), or 1(312) 455-8498 (outside USA)
E: proteintech@ptglab.com
W: ptglab.com

This product is exclusively available under Proteintech Group brand and is not available to purchase from any other manufacturer.

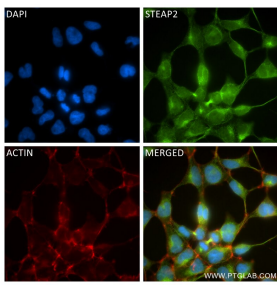
Selected Validation Data



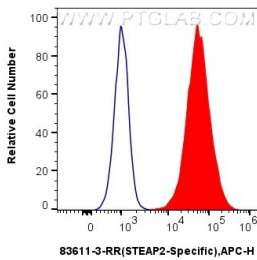
Immunofluorescent analysis of (4% PFA) fixed HEK-293 cells using STEAP2-Specific antibody (83611-3-RR, Clone: 240611E5) at dilution of 1:250 and CoraLite®488-Conjugated AffiniPure Goat Anti-Rabbit IgG(H+L) (SA00013-2). This data was developed using the same antibody clone with 83611-3-PBS in a different storage buffer formulation.



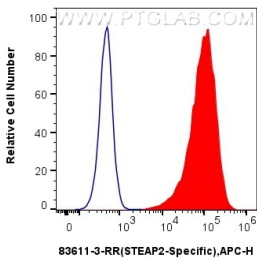
Various lysates were subjected to SDS PAGE followed by western blot with 83611-3-RR (STEAP2 antibody) at dilution of 1:1000 incubated at room temperature for 1.5 hours. This data was developed using the same antibody clone with 83611-3-PBS in a different storage buffer formulation.



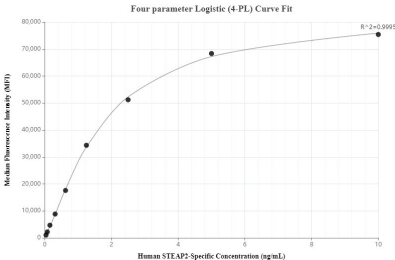
Immunofluorescent analysis of (4% PFA) fixed HEK-293 cells using STEAP2 antibody (83611-3-RR, Clone: 240611E5) at dilution of 1:250 and CoraLite®488-Conjugated Goat Anti-Rabbit IgG(H+L) (SA00013-2), CL594-Phalloidin (red). This data was developed using the same antibody clone with 83611-3-PBS in a different storage buffer formulation.



1x10⁶ A549 cells were intracellularly stained with 0.25 ug STEAP2-Specific Recombinant antibody (83611-3-RR, Clone:240611E5) and APC-Conjugated AffiniPure Goat Anti-Rabbit IgG(H+L) (red), or 0.25 ug Isotype Control (blue). Cells were fixed with 4% PFA and permeabilized with Flow Cytometry Perm Buffer (PF00011-C). This data was developed using the same antibody clone with 83611-3-PBS in a different storage buffer formulation.



1x10⁶ HEK-293 cells were intracellularly stained with 0.25 ug STEAP2-Specific Recombinant antibody (83611-3-RR, Clone:240611E5) and APC-Conjugated AffiniPure Goat Anti-Rabbit IgG(H+L) (red), or 0.25 ug Isotype Control (blue). Cells were fixed with 4% PFA and permeabilized with Flow Cytometry Perm Buffer (PF00011-C). This data was developed using the same antibody clone with 83611-3-PBS in a different storage buffer formulation.



Cytometric bead array standard curve of MP00600-3, STEAP2-Specific Recombinant Matched Antibody Pair, PBS Only. Capture antibody: 83611-3-PBS. Detection antibody: 83611-5-PBS. Standard: SY00725. Range: 0.039-10 ng/mL.