

For Research Use Only

STEAP2 Recombinant antibody

Catalog Number: 83611-3-RR



Basic Information

Catalog Number:

83611-3-RR

Size:

100ul, Concentration: 1000 ug/ml by Nanodrop;

Source:

Rabbit

Isotype:

IgG

GenBank Accession Number:

NM_152999

GeneID (NCBI):

261729

UNIPROT ID:

Q8NFT2

Full Name:

six transmembrane epithelial antigen of the prostate 2

Calculated MW:

56 kDa

Observed MW:

48-52 kDa

Purification Method:

Protein A purification

CloneNo.:

240611E5

Recommended Dilutions:

WB 1:500-1:2000

IF/ICC 1:125-1:500

Applications

Tested Applications:

WB, IF/ICC, FC (Intra), ELISA

Species Specificity:

human

Positive Controls:

WB : HEK-293 cells, MCF-7 cells, U2OS cells

IF/ICC : HEK-293 cells,

Background Information

STEAP2, also named as PCANAP1 and STAMP1, belongs to the STEAP family. It is a metalloredutase that has the ability to reduce both Fe³⁺ to Fe²⁺ and Cu²⁺ to Cu¹⁺. STEAP2 uses NAD⁺ as acceptor.

Storage

Storage:

Store at -20°C. Stable for one year after shipment.

Storage Buffer:

PBS with 0.02% sodium azide and 50% glycerol pH 7.3.

Aliquoting is unnecessary for -20°C storage

*** 20ul sizes contain 0.1% BSA

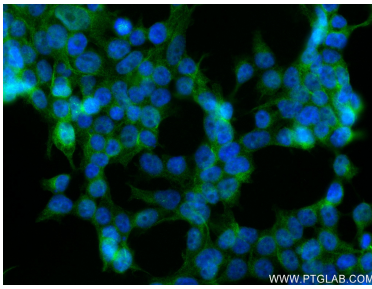
For technical support and original validation data for this product please contact:

T: 1 (888) 4PTGLAB (1-888-478-4522) (toll free in USA), or 1(312) 455-8498 (outside USA)

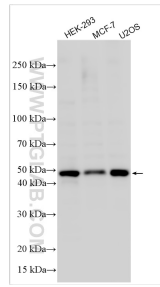
E: proteintech@ptglab.com
W: ptglab.com

This product is exclusively available under Proteintech Group brand and is not available to purchase from any other manufacturer.

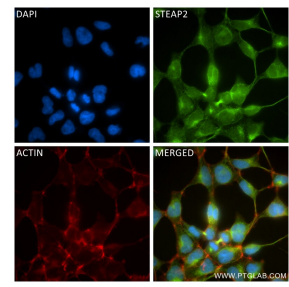
Selected Validation Data



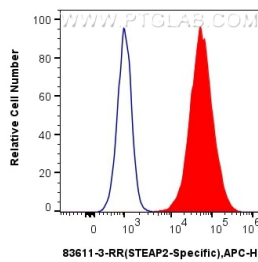
Immunofluorescent analysis of (4% PFA) fixed HEK-293 cells using STEAP2-Specific antibody (83611-3-RR, Clone: 240611E5) at dilution of 1:250 and CoraLite®488-Conjugated AffiniPure Goat Anti-Rabbit IgG(H+L) (SA00013-2).



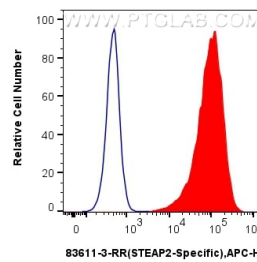
Various lysates were subjected to SDS PAGE followed by western blot with 83611-3-RR (STEAP2 antibody) at dilution of 1:1000 incubated at room temperature for 1.5 hours.



Immunofluorescent analysis of (4% PFA) fixed HEK-293 cells using STEAP2 antibody (83611-3-RR, Clone: 240611E5) at dilution of 1:250 and CoraLite®488-Conjugated Goat Anti-Rabbit IgG(H+L) (SA00013-2), CL594-Phalloidin (red).



1x10⁶ A549 cells were intracellularly stained with 0.25 ug STEAP2-Specific Recombinant antibody (83611-3-RR, Clone:240611E5) and APC-Conjugated AffiniPure Goat Anti-Rabbit IgG(H+L) (red), or 0.25 ug Isotype Control (blue). Cells were fixed with 4% PFA and permeabilized with Flow Cytometry Perm Buffer (PF00011-C).



1x10⁶ HEK-293 cells were intracellularly stained with 0.25 ug STEAP2-Specific Recombinant antibody (83611-3-RR, Clone:240611E5) and APC-Conjugated AffiniPure Goat Anti-Rabbit IgG(H+L) (red), or 0.25 ug Isotype Control (blue). Cells were fixed with 4% PFA and permeabilized with Flow Cytometry Perm Buffer (PF00011-C).