

For Research Use Only

Neurofibromin 1 Recombinant antibody, PBS Only (Capture)

Catalog Number: 83620-5-PBS



Basic Information

Catalog Number: 83620-5-PBS	GenBank Accession Number: M60915	Purification Method: Protein A purification
Size: 100ug , Concentration: 1 mg/ml by Nanodrop;	GeneID (NCBI): 4763	CloneNo.: 240540F2
Source: Rabbit	UNIPROT ID: P21359	
Isotype: IgG	Full Name: neurofibromin 1	
Immunogen Catalog Number: AG25799	Calculated MW: 319 kDa	
	Observed MW: 250-280 kDa	

Applications

Tested Applications:
WB, FC (Intra), Cytometric bead array, Indirect ELISA

Species Specificity:
human, mouse, rat

Product Information

83620-5-PBS targets Neurofibromin 1 as part of a matched antibody pair:

MP00570-2: 83620-5-PBS capture and 83620-4-PBS detection (validated in Cytometric bead array)

Unconjugated rabbit recombinant monoclonal antibody in PBS only (BSA and azide free) storage buffer at a concentration of 1 mg/mL, ready for conjugation. Created using Proteintech's proprietary in-house recombinant technology. Recombinant production enables unrivalled batch-to-batch consistency, easy scale-up, and future security of supply.

This conjugation ready format makes antibodies ideal for use in many applications including: ELISAs, multiplex assays requiring matched pairs, mass cytometry, and multiplex imaging applications. Antibody use should be optimized by the end user for each application and assay.

Background Information

NF1 codes for neurofibromin, a GTPase-activating protein that negatively regulates RAS/MAPK pathway activity by accelerating the hydrolysis of Ras-bound GTP. NF1 has a high mutation rate and mutations in NF1 can alter cellular growth control, and neural development, resulting in neurofibromatosis type 1 (NF1, also known as von Recklinghausen syndrome).

Storage

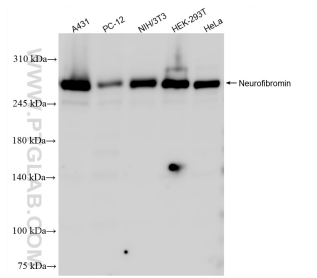
Storage:
Store at -80°C.

Storage Buffer:
PBS Only

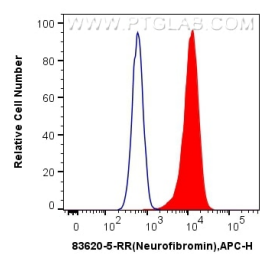
For technical support and original validation data for this product please contact:
T: 1 (888) 4PTGLAB (1-888-478-4522) (toll free in USA), or 1(312) 455-8498 (outside USA)
E: proteintech@ptglab.com
W: ptglab.com

This product is exclusively available under Proteintech Group brand and is not available to purchase from any other manufacturer.

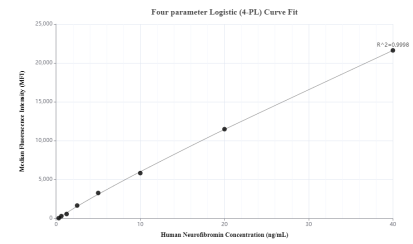
Selected Validation Data



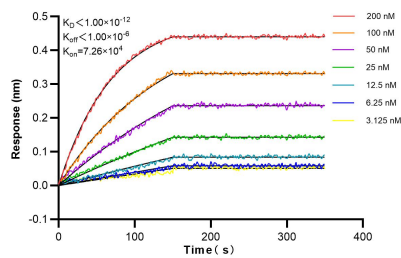
Various lysates were subjected to SDS PAGE followed by western blot with 83620-5-RR (Neurofibromin antibody) at dilution of 1:10000 incubated at room temperature for 1.5 hours. This data was developed using the same antibody clone with 83620-5-PBS in a different storage buffer formulation.



1x10⁶ HeLa cells were intracellularly stained with 0.25 ug Neurofibromin 1 Recombinant antibody (83620-5-RR, Clone:240540F2) and APC-Conjugated AffiniPure Goat Anti-Rabbit IgG(H+L) (red), or 0.25 ug Isotype Control (blue). Cells were fixed and permeabilized with Transcription Factor Staining Buffer Kit (PF00011). This data was developed using the same antibody clone with 83620-5-PBS in a different storage buffer formulation.



Cytometric bead array standard curve of MP00570-2, Neurofibromin Recombinant Matched Antibody Pair, PBS Only. Capture antibody: 83620-5-PBS. Detection antibody: 83620-4-PBS. Standard: Ag25799. Range: 0.313-40 ng/mL



Biolayer interferometry (BLI) kinetic assays of 83620-5-RR against Human Neurofibromin 1 were performed. The affinity constant is below 1 pM.