

For Research Use Only

C1orf83 Recombinant antibody, PBS Only (Detector)

Catalog Number: 83626-3-PBS



Basic Information

Catalog Number: 83626-3-PBS	GenBank Accession Number: BC035374	Purification Method: Protein A purification
Size: 100ug , Concentration: 1 mg/ml by Nanodrop;	GeneID (NCBI): 127428	CloneNo.: 240678D10
Source: Rabbit	UNIPROT ID: Q96MN5	
Isotype: IgG	Full Name: chromosome 1 open reading frame 83	
Immunogen Catalog Number: AG15040	Calculated MW: 208 aa, 23 kDa	

Applications

Tested Applications:
IHC, IF/ICC, FC (Intra), Cytometric bead array, Indirect ELISA

Species Specificity:
human

Product Information

83626-3-PBS targets C1orf83 as part of a matched antibody pair:

MP00578-2: 83626-1-PBS capture and 83626-3-PBS detection (validated in Cytometric bead array)

Unconjugated rabbit recombinant monoclonal antibody in PBS only (BSA and azide free) storage buffer at a concentration of 1 mg/mL, ready for conjugation. Created using Proteintech's proprietary in-house recombinant technology. Recombinant production enables unrivalled batch-to-batch consistency, easy scale-up, and future security of supply.

This conjugation ready format makes antibodies ideal for use in many applications including: ELISAs, multiplex assays requiring matched pairs, mass cytometry, and multiplex imaging applications. Antibody use should be optimized by the end user for each application and assay.

Storage

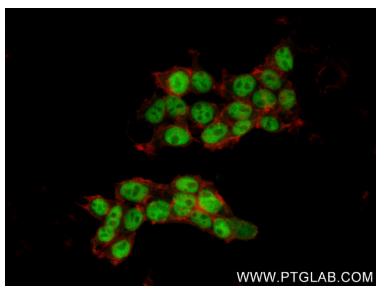
Storage:
Store at -80°C.

Storage Buffer:
PBS Only

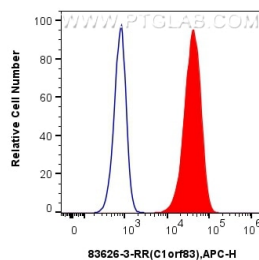
For technical support and original validation data for this product please contact:
T: 1 (888) 4PTGLAB (1-888-478-4522) (toll free in USA), or 1(312) 455-8498 (outside USA)
E: proteintech@ptglab.com
W: ptglab.com

This product is exclusively available under Proteintech Group brand and is not available to purchase from any other manufacturer.

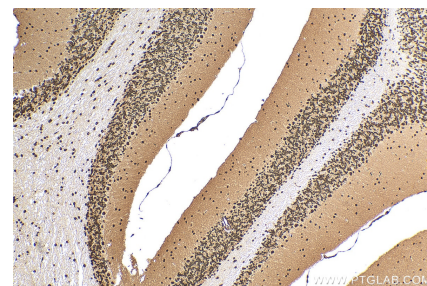
Selected Validation Data



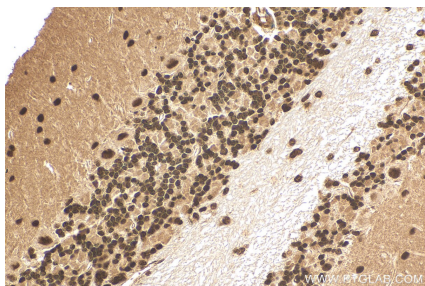
Immunofluorescent analysis of (4% PFA) fixed HEK-293 cells using C1orf83 antibody (83626-3-RR, Clone: 240678D10) at dilution of 1:250 and CoraLite®488-Conjugated AffiniPure Goat Anti-Rabbit IgG(H+L) (SA00013-2), CL594-Phalloidin (red). This data was developed using the same antibody clone with 83626-3-PBS in a different storage buffer formulation.



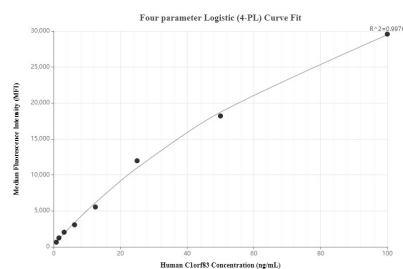
1×10^6 U2OS cells were intracellularly stained with 0.25 μ g C1orf83 Recombinant antibody (83626-3-RR, Clone:240678D10) and APC-Conjugated AffiniPure Goat Anti-Rabbit IgG(H+L) (red), or 0.25 μ g Isotype Control (blue). Cells were fixed and permeabilized with Transcription Factor Staining Buffer Kit (PF00011). This data was developed using the same antibody clone with 83626-3-PBS in a different storage buffer formulation.



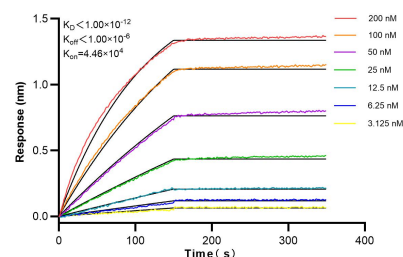
Immunohistochemical analysis of paraffin-embedded mouse cerebellum tissue slide using 83626-3-RR (C1orf83 antibody) at dilution of 1:400 (under 10x lens). Heat mediated antigen retrieval with Tris-EDTA buffer (pH 9.0). This data was developed using the same antibody clone with 83626-3-PBS in a different storage buffer formulation.



Immunohistochemical analysis of paraffin-embedded mouse cerebellum tissue slide using 83626-3-RR (C1orf83 antibody) at dilution of 1:400 (under 40x lens). Heat mediated antigen retrieval with Tris-EDTA buffer (pH 9.0). This data was developed using the same antibody clone with 83626-3-PBS in a different storage buffer formulation.



Cytometric bead array standard curve of MP00578-2, C1orf83 Recombinant Matched Antibody Pair, PBS Only. Capture antibody: 83626-1-PBS. Detection antibody: 83626-3-PBS. Standard: Ag15040. Range: 0.78-100 ng/mL.



Bi-layer interferometry (BLI) kinetic assays of 83626-3-RR against Human C1orf83 were performed. The affinity constant is below 1 pM.