

For Research Use Only

UBC12 Recombinant antibody

Catalog Number: 83628-1-RR



Basic Information

Catalog Number: 83628-1-RR	GenBank Accession Number: BC058924	Purification Method: Protein A purification
Size: 100ul , Concentration: 1000 ug/ml by Nanodrop;	GeneID (NCBI): 9040	CloneNo.: 240477H5
Source: Rabbit	UNIPROT ID: P61081	Recommended Dilutions: WB 1:500-1:1000
Isotype: IgG	Full Name: ubiquitin-conjugating enzyme E2M (UBC12 homolog, yeast)	
Immunogen Catalog Number: AG5984	Calculated MW: 21 kDa	
	Observed MW: 17-20 kDa	

Applications

Tested Applications: WB, FC (Intra), ELISA	Positive Controls: WB : HEK-293 cells, L02 cells, SMMC-7721 cells, A549 cells, HT-1080 cells
Species Specificity: human	

Background Information

UBE2M (Ubiquitin-conjugating enzyme E2 M), also called UBC12, accepts the ubiquitin-like protein NEDD8 from the UBA3-NAE1 E1 complex and catalyzes its covalent attachment to other proteins. The specific interaction between UBE2M and the E3 ubiquitin ligase RBX1, but not RBX2, suggests that the RBX1-UBE2M complex neddylates specific target proteins, such as CUL1, CUL2, CUL3 and CUL4. Involved in cell proliferation (PMID: 10207026; 15361859).

Storage

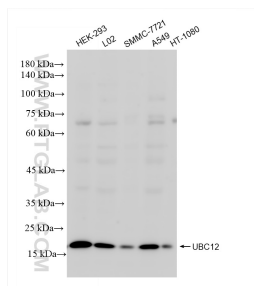
Storage:
Store at -20°C. Stable for one year after shipment.
Storage Buffer:
PBS with 0.02% sodium azide and 50% glycerol pH 7.3.
Aliquoting is unnecessary for -20°C storage

*** 20ul sizes contain 0.1% BSA

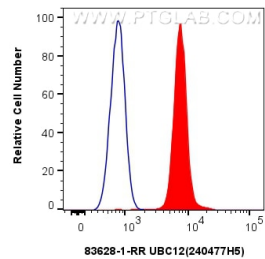
For technical support and original validation data for this product please contact:
T: 1 (888) 4PTGLAB (1-888-478-4522) (toll free in USA), or 1(312) 455-8498 (outside USA)
E: proteintech@ptglab.com
W: ptglab.com

This product is exclusively available under Proteintech Group brand and is not available to purchase from any other manufacturer.

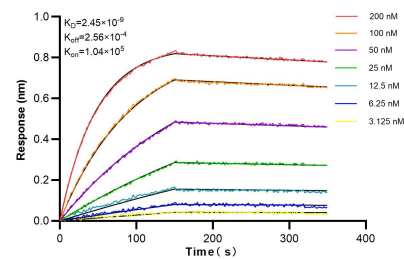
Selected Validation Data



Various lysates were subjected to SDS PAGE followed by western blot with 83628-1-RR (UBC12 antibody) at dilution of 1:500 incubated at room temperature for 1.5 hours.



1x10⁶ HEK-293 cells were intracellularly stained with 0.25 ug UBC12 Recombinant antibody (83628-1-RR, Clone:240477H5) and CoraLite® 488-Conjugated Goat Anti-Rabbit IgG(H+L) (SA00013-2) (red), or 0.25 ug Rabbit IgG Isotype Control Recombinant Antibody (98136-1-RR, Clone: 240953C9) (blue). Cells were fixed and permeabilized with Transcription Factor Staining Buffer Kit (PF00011).



Biolayer interferometry (BLI) kinetic assays of 83628-1-RR against Human UBC12 were performed. The affinity constant is 2.45 nM.