

For Research Use Only

CTHRC1 Recombinant antibody

Catalog Number: 83629-1-RR



Basic Information

Catalog Number: 83629-1-RR	GenBank Accession Number: BC014245	Purification Method: Protein A purification
Size: 100ul , Concentration: 1000 ug/ml by Nanodrop;	GeneID (NCBI): 115908	CloneNo.: 240442E1
Source: Rabbit	UNIPROT ID: Q96CG8	Recommended Dilutions: WB 1:5000-1:50000
Isotype: IgG	Full Name: collagen triple helix repeat containing 1	
Immunogen Catalog Number: AG9812	Calculated MW: 243 aa, 26 kDa	
	Observed MW: 25 kDa	

Applications

Tested Applications: WB, FC (Intra), ELISA	Positive Controls: WB : A375 cells,
Species Specificity: human	

Background Information

Collagen triple helix repeat-containing protein 1 (CTHRC1), also known as protein NMTC1, is a glycosylated secreted protein. CTHRC1 was identified as a novel molecular in injured and diseased arteries where it may contribute to vascular remodeling by limiting collagen matrix deposition and promoting cell migration (PMID: 15618538). It has been reported that CTHRC1 is a positive regulator of osteoblastic bone formation (PMID: 18779865). Besides, studies reveal that CTHRC1 expression is implicated in various malignancies, including hepatocellular carcinoma, gastric carcinoma, colon cancer, and lung cancer (PMID: 23922981; 24504172; 24746208; 25139095).

Storage

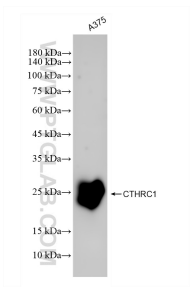
Storage:
Store at -20°C. Stable for one year after shipment.
Storage Buffer:
PBS with 0.02% sodium azide and 50% glycerol pH 7.3.
Aliquoting is unnecessary for -20°C storage

*** 20ul sizes contain 0.1% BSA

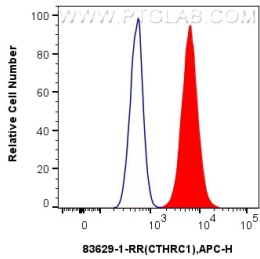
For technical support and original validation data for this product please contact:
T: 1 (888) 4PTGLAB (1-888-478-4522) (toll free in USA), or 1(312) 455-8498 (outside USA)
E: proteintech@ptglab.com
W: ptglab.com

This product is exclusively available under Proteintech Group brand and is not available to purchase from any other manufacturer.

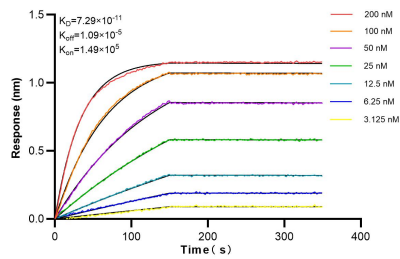
Selected Validation Data



A375 cells were subjected to SDS PAGE followed by western blot with 83629-1-RR (CTHRC1 antibody) at dilution of 1:10000 incubated at room temperature for 1.5 hours.



1x10⁶ A375 cells were intracellularly stained with 0.25 ug CTHRC1 Recombinant antibody (83629-1-RR, Clone:240442E1) and APC-Conjugated AffiniPure Goat Anti-Rabbit IgG(H+L) (red), or 0.25 ug Isotype Control (blue). Cells were fixed and permeabilized with Transcription Factor Staining Buffer Kit (PF00011).



Biolayer interferometry (BLI) kinetic assays of 83629-1-RR against Human CTHRC1 were performed. The affinity constant is 72.9 pM.