

For Research Use Only

Phospho-RCC1 (Ser11) Recombinant antibody, PBS Only

Catalog Number: 83630-1-PBS



Basic Information

Catalog Number:

83630-1-PBS

Size:

100ug, Concentration: 1 mg/ml by Nanodrop;

Source:

Rabbit

Isotype:

IgG

GenBank Accession Number:

NM_001048194

GeneID (NCBI):

1104

UNIPROT ID:

P18754

Full Name:

regulator of chromosome condensation 1

Calculated MW:

48 kDa

Observed MW:

45-50 kDa

Purification Method:

Protein A purification

CloneNo.:

230056B10

Applications

Tested Applications:

WB, ELISA

Species Specificity:

human

Background Information

CHC1, also named as RCC1, promotes the exchange of ran-bound gdp by gtp. It is involved in the regulation of onset of chromosome condensation in the S-phase. Phosphorylation of RCC1 on serines located in or near its nuclear localization signal activates RCC1 to generate RanGTP on mitotic chromosomes, which is required for spindle assembly and chromosome segregation. This antibody is a rabbit polyclonal antibody raised against human phospho-CHC1(Ser11) antigen.

Storage

Storage:

Store at -80°C.

Storage Buffer:

PBS Only

For technical support and original validation data for this product please contact:

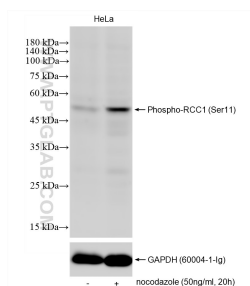
T: 1 (888) 4PTGLAB (1-888-478-4522) (toll free in USA), or 1(312) 455-8498 (outside USA)

E: proteintech@ptglab.com

W: ptglab.com

This product is exclusively available under Proteintech Group brand and is not available to purchase from any other manufacturer.

Selected Validation Data



Non-treated and nocodazole treated HeLa cells were subjected to SDS PAGE followed by western blot with 83630-1-RR (phospho-RCC1(Ser11) antibody) at dilution of 1:100 incubated at room temperature for 1.5 hours. The membrane was stripped and re-blotted with GAPDH (60004-1-Ig) subsequently. This data was developed using the same antibody clone with 83630-1-PBS in a different storage buffer formulation.