

For Research Use Only

OPTN/Optineurin Recombinant antibody, PBS Only (Capture)

Catalog Number: 83634-2-PBS



Basic Information

| | | |
|--|--|---|
| Catalog Number: 83634-2-PBS | GenBank Accession Number: BC013876 | Purification Method: Protein A purification |
| Size: 100ug, Concentration: 1 mg/ml by Nanodrop; | GeneID (NCBI): 10133 | CloneNo.: 240636E8 |
| Source: Rabbit | UNIPROT ID: Q96CV9 | |
| Isotype: IgG | Full Name: optineurin | |
| Immunogen Catalog Number: AG1272 | Calculated MW: 66 kDa | |

Applications

Tested Applications:
Cytometric bead array, Sandwich ELISA, Indirect ELISA, Sample test

Species Specificity:
human

Product Information

83634-2-PBS targets OPTN/Optineurin as part of a matched antibody pair:

MP00621-2: 83634-2-PBS capture and 83634-3-PBS detection (validated in Cytometric bead array, Sandwich ELISA)

MP00621-3: 83634-2-PBS capture and 83634-1-PBS detection (validated in Cytometric bead array)

Unconjugated rabbit recombinant monoclonal antibody in PBS only (BSA and azide free) storage buffer at a concentration of 1 mg/mL, ready for conjugation. Created using Proteintech's proprietary in-house recombinant technology. Recombinant production enables unrivalled batch-to-batch consistency, easy scale-up, and future security of supply.

This conjugation ready format makes antibodies ideal for use in many applications including: ELISAs, multiplex assays requiring matched pairs, mass cytometry, and multiplex imaging applications. Antibody use should be optimized by the end user for each application and assay.

Storage

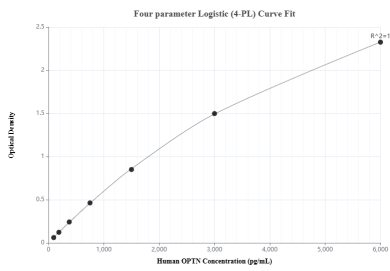
Storage:
Store at -80°C.

Storage Buffer:
PBS Only

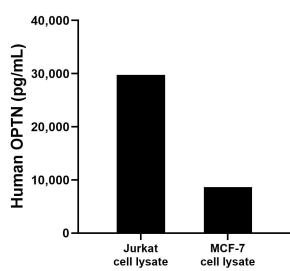
For technical support and original validation data for this product please contact:
T: 1 (888) 4PTGLAB (1-888-478-4522) (toll free in USA), or 1(312) 455-8498 (outside USA)
E: proteintech@ptglab.com
W: ptglab.com

This product is exclusively available under Proteintech Group brand and is not available to purchase from any other manufacturer.

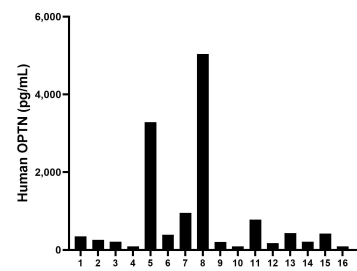
Selected Validation Data



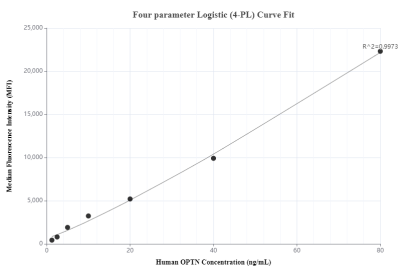
Sandwich ELISA standard curve of MP00621-2, Human OPTN Recombinant Matched Antibody Pair - PBS only. 83634-2-PBS was coated to a plate as the capture antibody and incubated with serial dilutions of standard Ag1272. 83634-3-PBS was HRP conjugated as the detection antibody. Range: 93.8-6000 pg/mL



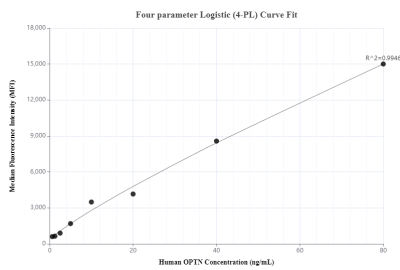
Jurkat and MCF-7 cell lysates were measured. The human OPTN concentration of detected samples was determined to be 29,772.0 pg/mL (based on a 1.0 mg/mL extract load) in Jurkat cell lysate and 8,643.8 pg/mL (based on a 4.3 mg/mL extract load) in MCF-7 cell lysate.



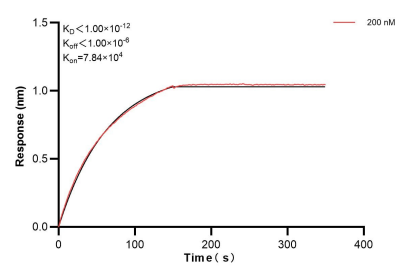
Serum of sixteen individual healthy human donors was measured. The human OPTN concentration of detected samples was determined to be 813.0 pg/mL with a range of 92.0 - 5,037.9 pg/mL



Cytometric bead array standard curve of MP00621-2, OPTN Recombinant Matched Antibody Pair, PBS Only. Capture antibody: 83634-2-PBS. Detection antibody: 83634-3-PBS. Standard: Ag1272. Range: 1.25-80 ng/mL



Cytometric bead array standard curve of MP00621-3, OPTN Recombinant Matched Antibody Pair, PBS Only. Capture antibody: 83634-2-PBS. Detection antibody: 83634-1-PBS. Standard: Ag1272. Range: 0.625-80 ng/mL



Bi-layer interferometry (BLI) kinetic assay of 83634-2-PBS against Human OPTN was performed. The affinity constant is below 1 pM.