

For Research Use Only

ATP6V1E1 Recombinant antibody

Catalog Number: 83636-6-RR



Basic Information

Catalog Number: 83636-6-RR	GenBank Accession Number: BC004443	Purification Method: Protein A purification
Size: 100ul , Concentration: 1000 ug/ml by Nanodrop;	GeneID (NCBI): 529	CloneNo.: 240584G12
Source: Rabbit	UNIPROT ID: P36543	Recommended Dilutions: WB 1:1000-1:4000
Isotype: IgG	Full Name: ATPase, H ⁺ transporting, lysosomal 31kDa, V1 subunit E1	
Immunogen Catalog Number: AG7399	Calculated MW: 26 kDa	
	Observed MW: 31 kDa	

Applications

Tested Applications: WB, ELISA	Positive Controls: WB : HepG2 cells, U2OS cells, rat brain tissue
Species Specificity: human, rat	

Background Information

ATP6V1E1, also named as ATP6E, ATP6E2 and p31, belongs to the V-ATPase E subunit family. It is a subunit of the peripheral V1 complex of vacuolar ATPase essential for assembly or catalytic function. V-ATPase is responsible for acidifying a variety of intracellular compartments in eukaryotic cells. V-ATPase and the lack of mycobacterial phagosome acidification are directly attributed to the Mtb protein tyrosine phosphatase PtpA.

Storage

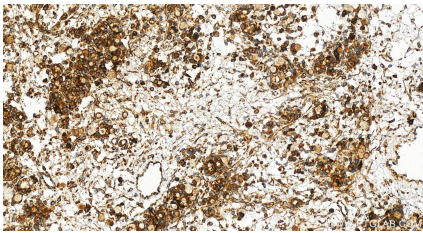
Storage:
Store at -20°C. Stable for one year after shipment.
Storage Buffer:
PBS with 0.02% sodium azide and 50% glycerol pH 7.3.
Aliquoting is unnecessary for -20°C storage

*** 20ul sizes contain 0.1% BSA

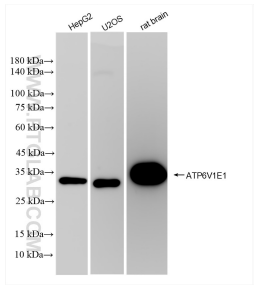
For technical support and original validation data for this product please contact:
T: 1 (888) 4PTGLAB (1-888-478-4522) (toll free in USA), or 1(312) 455-8498 (outside USA)
E: proteintech@ptglab.com
W: ptglab.com

This product is exclusively available under Proteintech Group brand and is not available to purchase from any other manufacturer.

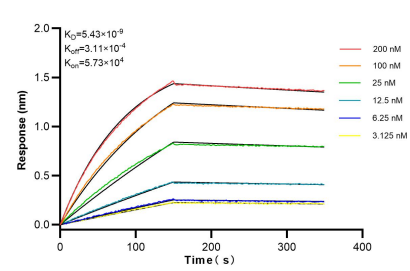
Selected Validation Data



Immunohistochemical analysis of paraffin-embedded human ovary cancer tissue slide using 83636-6-RR (ATP6V1E1 antibody) at dilution of 1:200 (under 20x lens). Heat mediated antigen retrieval with Tris-EDTA buffer (pH 9.0).



Various lysates were subjected to SDS PAGE followed by western blot with 83636-6-RR (ATP6V1E1 antibody) at dilution of 1:2000 incubated at room temperature for 1.5 hours.



Biolayer interferometry (BLI) kinetic assays of 83636-6-RR against Human ATP6V1E1 were performed. The affinity constant is 5.43 nM.