

For Research Use Only

# KCND3 Recombinant antibody, PBS Only (Detector)

Catalog Number: 83640-5-PBS



## Basic Information

<b>Catalog Number:</b> 83640-5-PBS	<b>GenBank Accession Number:</b> BC113477	<b>Purification Method:</b> Protein A purification
<b>Size:</b> 100ug, Concentration: 1 mg/ml by Nanodrop;	<b>GeneID (NCBI):</b> 3752	<b>CloneNo.:</b> 240578F12
<b>Source:</b> Rabbit	<b>UNIPROT ID:</b> Q9UK17	
<b>Isotype:</b> IgG	<b>Full Name:</b> potassium voltage-gated channel, Shal-related subfamily, member 3	
<b>Immunogen Catalog Number:</b> AG22183	<b>Calculated MW:</b> 655 aa, 73 kDa	

## Applications

**Tested Applications:**  
WB, Cytometric bead array, Indirect ELISA

**Species Specificity:**  
human, rat

## Product Information

83640-5-PBS targets KCND3 as part of a matched antibody pair:

MP00616-2: 83640-1-PBS capture and 83640-5-PBS detection (validated in Cytometric bead array)

MP00616-3: 83640-3-PBS capture and 83640-5-PBS detection (validated in Cytometric bead array)

Unconjugated rabbit recombinant monoclonal antibody in PBS only (BSA and azide free) storage buffer at a concentration of 1 mg/mL, ready for conjugation. Created using Proteintech's proprietary in-house recombinant technology. Recombinant production enables unrivalled batch-to-batch consistency, easy scale-up, and future security of supply.

This conjugation ready format makes antibodies ideal for use in many applications including: ELISAs, multiplex assays requiring matched pairs, mass cytometry, and multiplex imaging applications. Antibody use should be optimized by the end user for each application and assay.

## Storage

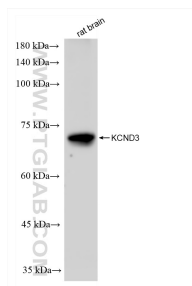
**Storage:**  
Store at -80°C.

**Storage Buffer:**  
PBS Only

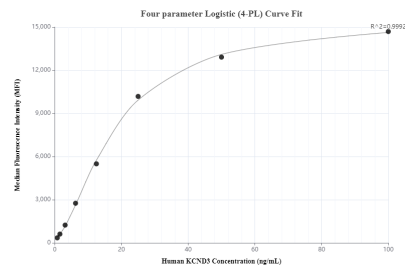
For technical support and original validation data for this product please contact:  
T: 1 (888) 4PTGLAB (1-888-478-4522) (toll free in USA), or 1(312) 455-8498 (outside USA)  
E: [proteintech@ptglab.com](mailto:proteintech@ptglab.com)  
W: [ptglab.com](http://ptglab.com)

This product is exclusively available under Proteintech Group brand and is not available to purchase from any other manufacturer.

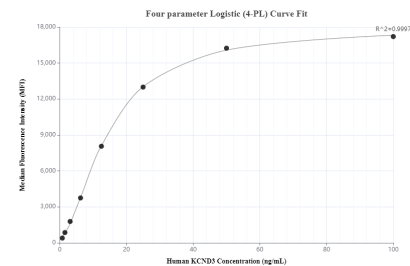
## Selected Validation Data



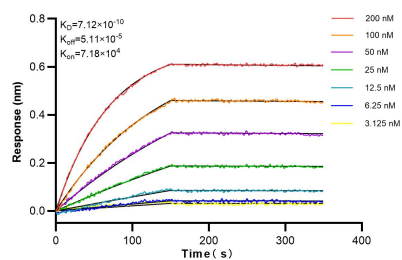
rat brain tissue were subjected to SDS PAGE followed by western blot with 83640-5-RR (KCND3 antibody) at dilution of 1:1000 incubated at room temperature for 1.5 hours. This data was developed using the same antibody clone with 83640-5-PBS in a different storage buffer formulation.



Cytometric bead array standard curve of MP00616-2, KCND3 Recombinant Matched Antibody Pair, PBS Only. Capture antibody: 83640-1-PBS. Detection antibody: 83640-5-PBS. Standard: Ag22183. Range: 0.78-100 ng/mL.



Cytometric bead array standard curve of MP00616-3, KCND3 Recombinant Matched Antibody Pair, PBS Only. Capture antibody: 83640-3-PBS. Detection antibody: 83640-5-PBS. Standard: Ag22183. Range: 0.78-100 ng/mL.



Biolayer interferometry (BLI) kinetic assays of 83640-5-RR against Human KCND3 were performed. The affinity constant is 0.712 nM.