

For Research Use Only

IL-1 alpha Recombinant antibody

Catalog Number: 83644-1-RR



Basic Information

Catalog Number: 83644-1-RR	GenBank Accession Number: NM_010554	Purification Method: Protein A purification
Size: 100ul , Concentration: 1000 ug/ml by Nanodrop;	GeneID (NCBI): 16175	CloneNo.: 240431B5
Source: Rabbit	UNIPROT ID: P01582	Recommended Dilutions: WB 1:1000-1:4000 IF/ICC 1:125-1:500
Isotype: IgG	Full Name: interleukin 1 alpha	
	Calculated MW: 31kd	
	Observed MW: 31 kDa	

Applications

Tested Applications: WB, IF/ICC, ELISA	Positive Controls:
Species Specificity: mouse	WB : RAW 264.7 cells, IF/ICC : LPS treated RAW 264.7 cells,

Background Information

Interleukin-1 α (IL-1 Alpha) is a protein that plays a crucial role in the regulation of a number of key cellular processes. IL-1 Alpha is a cytokine and a potent mediator of body's response to inflammation, microbial invasion, tissue injury and immunological response. In addition, recent studies suggest that IL-1 Alpha also has a role in wound healing, rheumatoid arthritis, Alzheimer's disease and tumor growth. IL-1 Alpha functions as an alarmin during the process of sterile inflammation. It serves as a signal from dying cells to potentiate the inflammatory response, increasing the expression of other secreted factors like IL-6 and IL-8. IL-1 Alpha was found to affect the cell cycle of osteosarcoma cell to reduce cell growth. IL-1 Alpha is initially translated as approximately 30-kD polypeptides that are processed to approximately 17.5-kD polypeptides prior to, or during, release from macrophages.

Storage

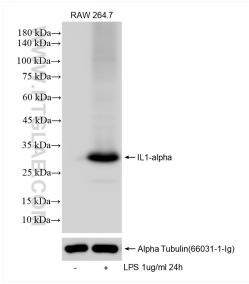
Storage:
Store at -20°C. Stable for one year after shipment.
Storage Buffer:
PBS with 0.02% sodium azide and 50% glycerol pH 7.3.
Aliquoting is unnecessary for -20°C storage

*** 20ul sizes contain 0.1% BSA

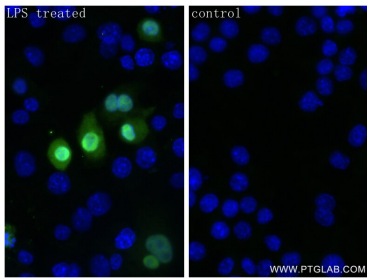
For technical support and original validation data for this product please contact:
T: 1 (888) 4PTGLAB (1-888-478-4522) (toll free in USA), or 1(312) 455-8498 (outside USA)
E: proteintech@ptglab.com
W: ptglab.com

This product is exclusively available under Proteintech Group brand and is not available to purchase from any other manufacturer.

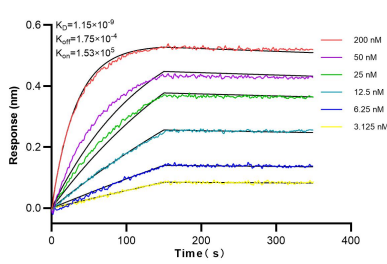
Selected Validation Data



Untreated and LPS treated RAW 264.7 cells were subjected to SDS PAGE followed by western blot with 83644-1-RR (IL-1 α antibody) at dilution of 1:2000 incubated at room temperature for 1.5 hours.



Immunofluorescent analysis of (4% PFA) fixed LPS treated RAW 264.7 cells using IL-1 α antibody (83644-1-RR, Clone: 240431B5) at dilution of 1:250 and CoraLite ® 488-Conjugated AffiniPure Goat Anti-Rabbit IgG(H+L) (SA00013-2).



Biolayer interferometry (BLI) kinetic assays of 83644-1-RR against Mouse IL-1 α were performed. The affinity constant is 1.15 nM.