

For Research Use Only

# SWAP70 Recombinant antibody, PBS Only

Catalog Number: 83646-6-PBS



## Basic Information

<b>Catalog Number:</b> 83646-6-PBS	<b>GenBank Accession Number:</b> BC000616	<b>Purification Method:</b> Protein A purification
<b>Size:</b> 100ug , Concentration: 1 mg/ml by Nanodrop;	<b>GeneID (NCBI):</b> 23075	<b>CloneNo.:</b> 240641F5
<b>Source:</b> Rabbit	<b>UNIPROT ID:</b> Q9UH65	
<b>Isotype:</b> IgG	<b>Full Name:</b> SWAP-70 protein	
<b>Immunogen Catalog Number:</b> AG34855	<b>Calculated MW:</b> 69 kDa	
	<b>Observed MW:</b> 65-70 kDa	

## Applications

**Tested Applications:**  
WB, IHC, FC (Intra), ELISA

**Species Specificity:**  
human, mouse

## Background Information

SWAP70 (switching B cell complex subunit), also known as HSPC321. It is expected to be located in cell membrane, cytoplasm and nucleus, the protein is mainly expressed in spleen, and fairly abundant in kidney, lung and liver. Also found in monocytes, macrophages and mature B-cells (PMID: 10681448). The calculated molecular weight of SWAP70 is 69 kDa. SWAP-70 is a component of an enzyme complex that recombines Ig switch regions in vitro. It is reported that the cloning of the human cDNA and its B lymphocyte-specific expression. Although its sequence contains three nuclear localization signals, in small resting B cells, SWAP-70 is mainly found in the cytoplasm. On stimulation, SWAP-70 translocates to the nucleus. In activated, class-switching B cell cultures, it is associated with membrane IgG, but not IgM. The membrane Ig association requires a functional pleckstrin homology domain and is controlled by the C terminus. It is suggested that SWAP-70 is involved not only in nuclear events but also in signaling in B cell activation (PMID: 10681448).

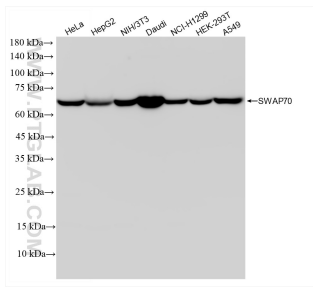
## Storage

**Storage:**  
Store at -80°C.  
**Storage Buffer:**  
PBS Only

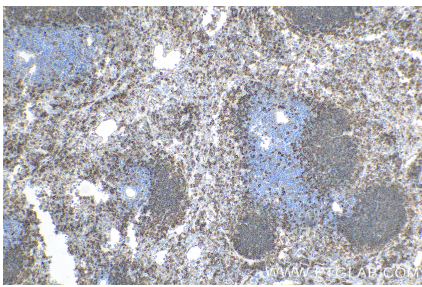
For technical support and original validation data for this product please contact:  
T: 1 (888) 4PTGLAB (1-888-478-4522) (toll free in USA), or 1(312) 455-8498 (outside USA)  
E: [proteintech@ptglab.com](mailto:proteintech@ptglab.com)  
W: [ptglab.com](http://ptglab.com)

This product is exclusively available under Proteintech Group brand and is not available to purchase from any other manufacturer.

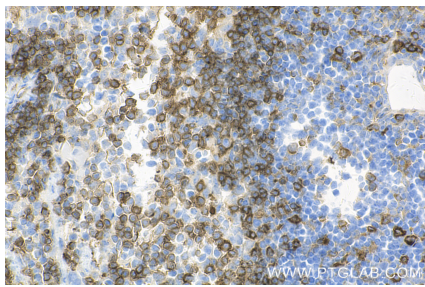
## Selected Validation Data



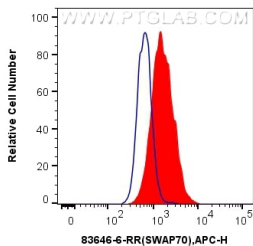
Various lysates were subjected to SDS PAGE followed by western blot with 83646-6-RR (SWAP70 antibody) at dilution of 1:10000 incubated at room temperature for 1.5 hours. This data was developed using the same antibody clone with 83646-6-PBS in a different storage buffer formulation.



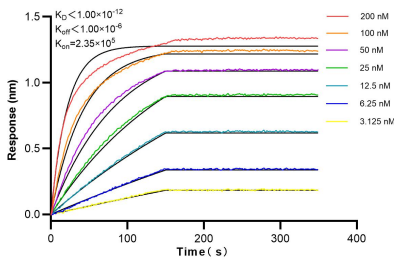
Immunohistochemical analysis of paraffin-embedded mouse spleen tissue slide using 83646-6-RR (SWAP70 antibody) at dilution of 1:500 (under 10x lens). Heat mediated antigen retrieval with Tris-EDTA buffer (pH 9.0). This data was developed using the same antibody clone with 83646-6-PBS in a different storage buffer formulation.



Immunohistochemical analysis of paraffin-embedded mouse spleen tissue slide using 83646-6-RR (SWAP70 antibody) at dilution of 1:500 (under 40x lens). Heat mediated antigen retrieval with Tris-EDTA buffer (pH 9.0). This data was developed using the same antibody clone with 83646-6-PBS in a different storage buffer formulation.



1x10<sup>6</sup> SK-N-SH cells were intracellularly stained with 0.25 µg SWAP70 Recombinant antibody (83646-6-RR, Clone:240641F5) and APC-Conjugated AffiniPure Goat Anti-Rabbit IgG(H+L) (red), or 0.25 µg Isotype Control (blue). Cells were fixed with 4% PFA and permeabilized with Flow Cytometry Perm Buffer (PF00011-C). This data was developed using the same antibody clone with 83646-6-PBS in a different storage buffer formulation.



Biolayer interferometry (BLI) kinetic assays of 83646-6-RR against Human SWAP70 were performed. The affinity constant is below 1 pM.