

For Research Use Only

Involucrin Recombinant antibody, PBS Only

Catalog Number: 83649-5-PBS



Basic Information

Catalog Number: 83649-5-PBS	GenBank Accession Number: NM_005547	Purification Method: Protein A purification
Size: 100ug, Concentration: 1 mg/ml by Nanodrop;	GeneID (NCBI): 3713	CloneNo.: 240566D8
Source: Rabbit	UNIPROT ID: P07476	
Isotype: IgG	Full Name: involucrin	
Immunogen Catalog Number: AG29585	Calculated MW: 68 kDa	
	Observed MW: 140 kDa	

Applications

Tested Applications:
WB, IHC, ELISA

Species Specificity:
human

Background Information

Involucrin is a protein precursor of the epidermal cornified envelope that is assembled in the outermost layers of the epidermis. Involucrin expression is restricted to the suprabasal epidermal layers (spinous and granular layers) during normal keratinocyte differentiation and is a useful marker of terminal differentiation. The predicted MW of involucrin is 68 kDa, but it also forms 120 kDa dimers, while different reports provided variable results ranging from 90-140 kDa. (PMID: 11099111, 1503502, 12150517)

Storage

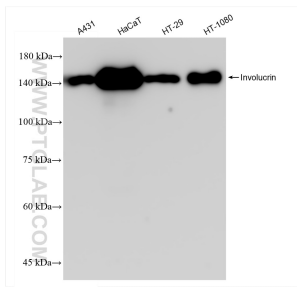
Storage:
Store at -80°C.

Storage Buffer:
PBS Only

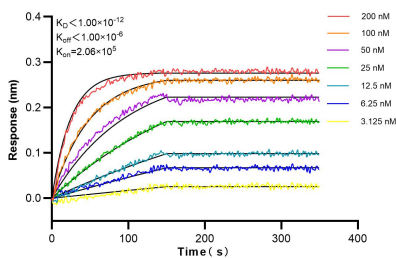
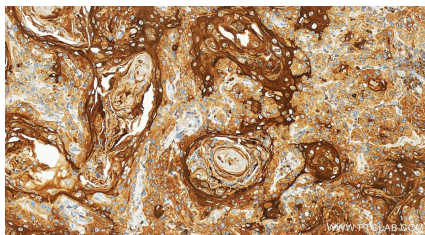
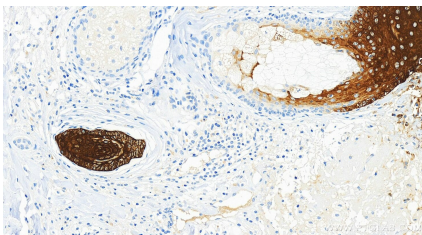
For technical support and original validation data for this product please contact:
T: 1 (888) 4PTGLAB (1-888-478-4522) (toll free in USA), or 1(312) 455-8498 (outside USA)
E: proteintech@ptglab.com
W: ptglab.com

This product is exclusively available under Proteintech Group brand and is not available to purchase from any other manufacturer.

Selected Validation Data



Various lysates were subjected to SDS PAGE followed by western blot with 83649-5-RR (Involucrin antibody) at dilution of 1:10000 incubated at room temperature for 1.5 hours. This data was developed using the same antibody clone with 83649-5-PBS in a different storage buffer formulation.



Biolayer interferometry (BLI) kinetic assays of 83649-5-RR against Human Involucrin were performed. The affinity constant is below 1 pM.