

Involucrin Recombinant antibody

Catalog Number: 83649-5-RR

Basic Information

Catalog Number: 83649-5-RR	GenBank Accession Number: NM_005547	Purification Method: Protein A purification
Size: 100ul , Concentration: 500 ug/ml by Nanodrop;	GeneID (NCBI): 3713	CloneNo.: 240566D8
Source: Rabbit	UNIPROT ID: P07476	Recommended Dilutions: WB 1:5000-1:50000 IHC 1:400-1:1600
Isotype: IgG	Full Name: involucrin	
Immunogen Catalog Number: AG29585	Calculated MW: 68 kDa	
	Observed MW: 140 kDa	

Applications

Tested Applications:
WB, IHC, ELISA

Species Specificity:
human

Note-IHC: suggested antigen retrieval with **TE buffer pH 9.0; (*)** Alternatively, antigen retrieval may be performed with **citrate buffer pH 6.0**

Positive Controls:

WB : A431 cells, HaCaT cells, HT-29 cells, HT-1080 cells

IHC : human skin tissue, human skin cancer tissue

Background Information

Involucrin is a protein precursor of the epidermal cornified envelope that is assembled in the outermost layers of the epidermis. Involucrin expression is restricted to the suprabasal epidermal layers (spinous and granular layers) during normal keratinocyte differentiation and is a useful marker of terminal differentiation. The predicted MW of involucrin is 68 kDa, but it also forms 120 kDa dimers, while different reports provided variable results ranging from 90-140 kDa. (PMID: 11099111, 1503502, 12150517)

Storage

Storage:

Store at -20°C. Stable for one year after shipment.

Storage Buffer:

PBS with 0.02% sodium azide and 50% glycerol pH 7.3.

Aliquoting is unnecessary for -20°C storage

***** 20ul sizes contain 0.1% BSA**

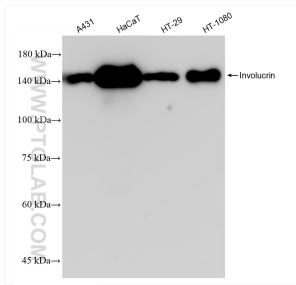
For technical support and original validation data for this product please contact:

T: 1 (888) 4PTGLAB (1-888-478-4522) (toll free in USA), or 1(312) 455-8498 (outside USA)

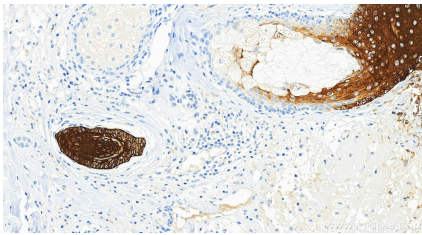
E: proteintech@ptglab.com
W: ptglab.com

This product is exclusively available under Proteintech Group brand and is not available to purchase from any other manufacturer.

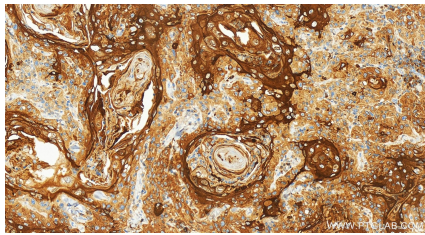
Selected Validation Data



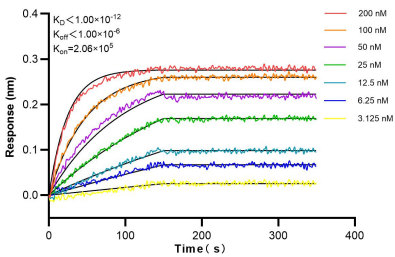
Various lysates were subjected to SDS PAGE followed by western blot with 83649-5-RR (Involucrin antibody) at dilution of 1:10000 incubated at room temperature for 1.5 hours.



Immunohistochemical analysis of paraffin-embedded human skin tissue slide using 83649-5-RR (Involucrin antibody) at dilution of 1:800 (under 20x lens). Heat mediated antigen retrieval with Tris-EDTA buffer (pH 9.0).



Immunohistochemical analysis of paraffin-embedded human skin cancer tissue slide using 83649-5-RR (Involucrin antibody) at dilution of 1:800 (under 20x lens). Heat mediated antigen retrieval with Tris-EDTA buffer (pH 9.0).



Biolayer interferometry (BLI) kinetic assays of 83649-5-RR against Human Involucrin were performed. The affinity constant is below 1 pM.